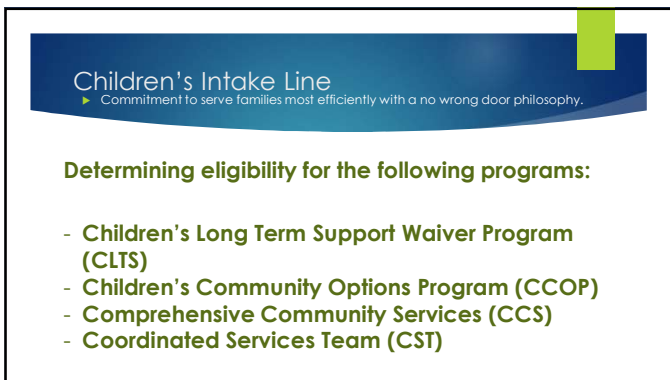
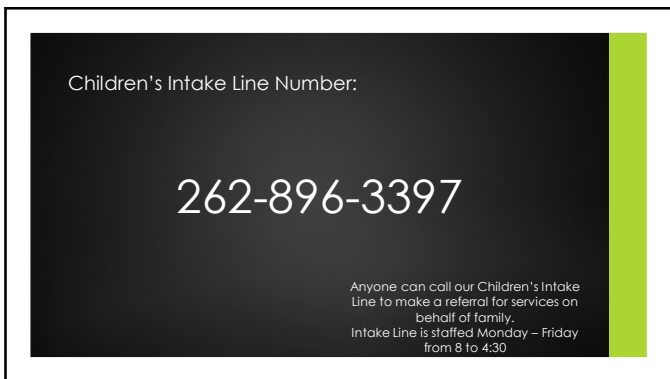




1



2



3

Intake and Eligibility

- ▶ Intake Referral Information is obtained
- ▶ Home Visit with the youth present is scheduled
- ▶ Obtaining copies of medical documentation and professional assessments
- ▶ Completion of the Children's Functional Screen
- ▶ Documentation completed to obtain source of Medicaid
- ▶ Referrals to other programs as necessary such as Katie Beckett and Birth to Three

4

Next steps after eligibility is determined

- ▶ **CLTS**
 - ▶ The Intake worker completes all of the enrollment paperwork to establish a start date for services and then a service coordinator is assigned to the family.
- ▶ **CST/CCS**
 - ▶ Children's Intake notifies the CCS/CST program of the eligibility findings. The CST/Outreach Coordinator contacts the youth/family to confirm their interest in CCS/CST.
 - ▶ If youth/family are interested in CCS or CST, the outreach worker works with the family to confirm residency, diagnosis and Medicaid source. The Outreach Coordinator gathers releases of information and details regarding current and past providers.
 - ▶ If a youth's mental health needs can be addressed via community outpatient providers and only need care coordination, then the youth could remain open in CST.
 - ▶ If the youth requires a higher level of services than CST can provide and the youth's mental health needs warrant CCS services, then a service facilitator and mental health professional will be assigned for program application and assessment.

5

Children's Long Term Support Waiver Program

6



7

What is the CLTS Waiver?

- ▶ Children's Long Term Support Waiver
- ▶ It is funded by Home and Community Based State Medicaid funding.
- ▶ Provides supports & services to children with disabilities and their families.
- ▶ Each child has a Service Coordinator that works with the child and family to identify goals and assess their needs. Service Coordinators complete home visits with families at least twice a year.
- ▶ After assessment and identification of needs, a plan is developed together called the Individual Service Plan (ISP) based off the goals (Outcomes) created together.
- ▶ The plan and assessed needs are revisited at least every 6 months or as needed.
- ▶ CLTS is the payer of last resort. Private insurance and Medicaid card covered services must be exhausted before waiver can cover a service or item.

8

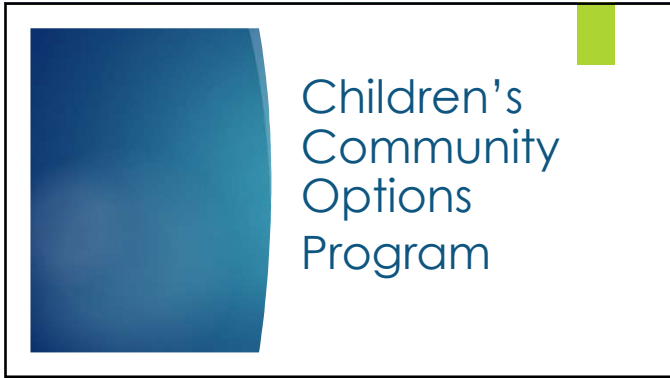
Is there a cost for families?
 After the plan is developed, there is a calculation applied to determine whether a Parental Payment Liability (PPL) exists. The formula is based on size of the family, family's income and current State poverty guidelines. The maximum amount a family can be charged is up to 41% of the total billed for services the child receives.

Examples of CLTS Waiver Services

<ul style="list-style-type: none"> ◆ Assistive Technology ◆ Childcare services ◆ Communication Assistance for Community Inclusion ◆ Community Integration Services ◆ Community/Competitive Integrated Employment ◆ Counseling and therapeutic services ◆ Daily living skills training ◆ Family/Unpaid Caregiver Supports and Services ◆ Grief and Bereavement Counseling ◆ Health and Wellness ◆ Home Modifications ◆ Mentoring ◆ Personal Emergency Response Systems 	<ul style="list-style-type: none"> ◆ Respite care ◆ Specialized medical and therapeutic supplies ◆ Supportive Home Care ◆ Support and service coordination ◆ Transportation ◆ Vehicle Modifications ◆ Virtual Equipment and Supports
--	---

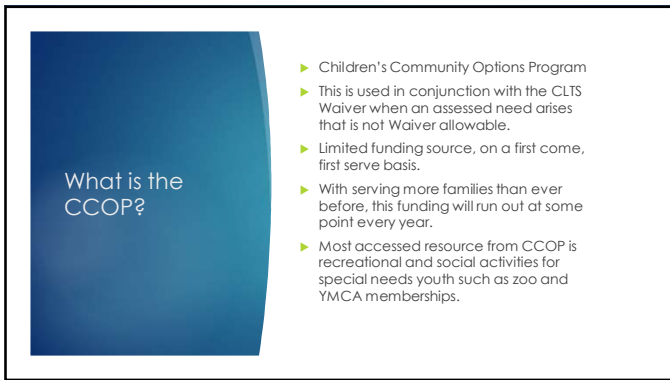
For a complete listing of CLTS Waiver Services: [Medicaid Home and Community-Based Services Waiver Manual for the CLTS Waiver Program \[wisconsin.gov\]](#)

9



Children's
Community
Options
Program

10



What is the
CCOP?

- ▶ Children's Community Options Program
- ▶ This is used in conjunction with the CLTS Waiver when an assessed need arises that is not Waiver allowable.
- ▶ Limited funding source, on a first come, first serve basis.
- ▶ With serving more families than ever before, this funding will run out at some point every year.
- ▶ Most accessed resource from CCOP is recreational and social activities for special needs youth such as zoo and YMCA memberships.

11



Coordinated
Services
Team
Initiative

12

What is the CST?

- ▶ Coordinated Services Team Initiative
- ▶ CST process centers decision-making by the family team which supports the child and family to meet their identified treatment needs.
- ▶ Family Recovery Team meetings include a balance of natural supports such as relatives, friends, with service providers such as a therapist, teacher, and social worker.
- ▶ These team meetings occur regularly to address interventions and supports of the identified needs, develop a plan of care, provide monitoring of services, and establish a goal of transition to having their needs met without the formal CST intervention.

13


Comprehensive Community Services

14

What is the CCS?

- ▶ Comprehensive Community Services
- ▶ CCS is a voluntary, community-based Program funded by Medicaid.
- ▶ CCS offers a wide array of psychosocial rehabilitation and treatment services for youth with mental health and/or substance use concerns.
- ▶ CCS is different type of services than traditional outpatient treatment. These services and supportive activities assist youth to facilitate recovery and to achieve their highest possible level of independent functioning and stability.

15



Questions?

Common Links:

- [Children's Long-Term Support Waivers Home Website](#)
- [Medicaid Home and Community Based Waivers Manual](#)
- [Wisconsin's Functional Screen](#)
- [CCS: Consumers | Wisconsin Department of Health Services](#)

Waukesha County Children's Intake 262-896-3397
