

# SDW School-Based Mental Health Services



**P**roviding  
**A**ccess  
**T**o  
**H**ealing

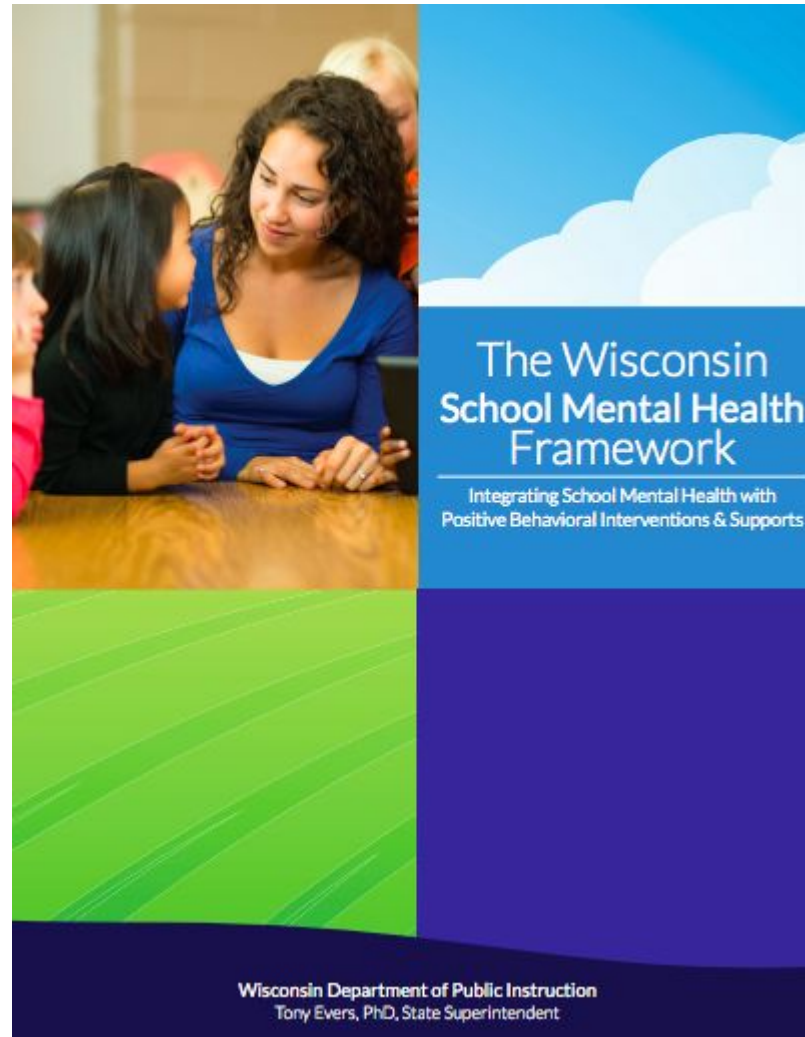
Luke Pinion  
Director of Student Services

**CAFSAC Presentation**

**3/17/22**

# The Why?

- Increasing student mental health needs
- Removing barriers to treatment
- Unmet needs
- Increasing access to treatment
- School capacity
- DPI School Mental Health Framework



The Wisconsin  
School Mental Health  
Framework

Integrating School Mental Health with  
Positive Behavioral Interventions & Supports

Wisconsin Department of Public Instruction  
Tony Evers, PhD, State Superintendent

The cover features a photograph of a woman with dark curly hair in a blue top talking to a young girl with long dark hair. The background is divided into blue, green, and purple sections with white cloud graphics.

Our PATH Community Partner & Provider



family  
service

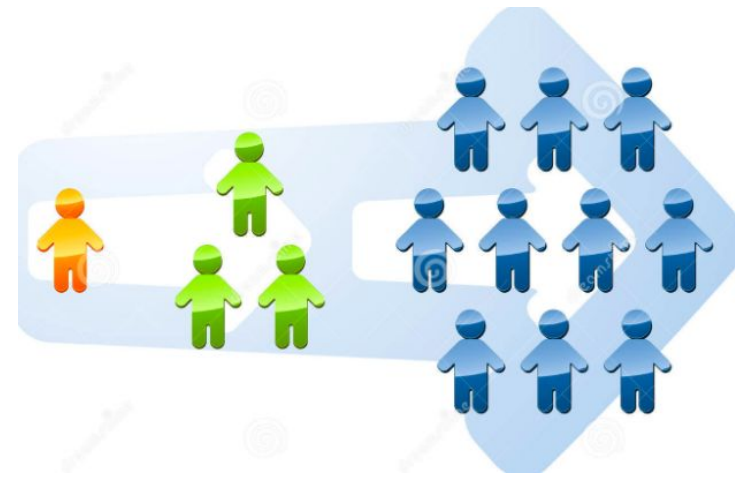
*counseling • support • compassion*

# History of PATH

- **Origins**
  - Conversation began over 10 years ago
  - RFPs were accepted from non-profit organizations in Waukesha County
  - Whittier - 2011-2012 school year
  - Horning - 2014-2015 school year
- **Billable model**
- **Started with a limited number of seats at each school**
  - Grew within each school in subsequent years
- **Adhere to legal, ethical and confidentiality guidelines & requirements**
  - HIPPA - medical/mental health privacy laws
  - FERPA - school privacy requirements
- **Grant-funded supplemental services**
  - Began in 2017-2018

# PATH Expansion in SDW

- 17-18
  - Onboarded third SDW school to PATH at this time (Banting)
  - United Way - Helping Kids Success (HKS) Grant
    - South, Hadfield, and Blair
- 18-19
  - The DPI School Mental Health Grant was applied for and awarded
    - Hawthorne, Prairie, Heyer, Lowell, & Bethesda
  - HKS Grant continued
- 19-20
  - DPI grant awarded
  - Rose Glen, Randall STEM, Summit View, Meadowbrook, & Hillcrest
  - HKS Grant continued - East Alternative brought on (Blair closed)
- 20-21
  - DPI grant awarded
  - Les Paul, Butler, Saratoga STEM, North, & West
  - HKS Grant continues
  - PATH Coordinator (Mary Green, School Social Worker)



- 22-23
  - DPI grant awarded
  - HKS Grant Expanded/Renamed
    - “Partnership Schools”
  - Added 2 Mental Health Navigator positions

# Helping Kids Succeed / Partnership Schools

## United Way Grant

- 50% or more free/reduced lunch population required
- Substantially increases the reach of our community mental health providers and added a mental health navigator
  - Not limited to face-to-face therapy
  - Attend school problem solving meetings
  - Consultations
  - Parent, student, and staff training
  - Mental health awareness, advocacy, & navigation
- HKS Aims to Increase
  - **Student achievement and readiness**
  - Family stability and empowerment
  - Educator effectiveness and retention
  - Community awareness and engagement



**Greater Milwaukee  
& Waukesha County**

# DPI School Mental Health Grant



- Fourth consecutive year of receiving funds
- WI: \$3.25 million (18-19), \$6.5 million/year (19-21+)
  - 2-year grant cycle started in 2019
- \$75,000 per district maximum per year
- Highly Competitive
- Requirements
  - Initiate or expand collaboration with a community mental health partner (CMHP)
  - Collaboration between the school mental health providers (school psychologists, social workers, counselors) and CMHPs
- SDW focus: Expansion of PATH with sustainability plan
  - Year 1: Establish relationships, build readiness and knowledge
  - Year 2: Billable PATH

# DPI School Mental Health Grant



- Additional Services of the CMHP
  - Mental health navigation
  - Mental health information/training for students & parents
    - Classroom Presentations
    - Parent nights/events
    - Classroom presentations
  - School consultations
  - Problem-solving team meetings
  - Small group facilitation
- 3-year staff training series on trauma-informed care and mental health
  - 3 hours of content every year
- Second Step (SEL) Kits Purchased in Year 1 for elementary



**Grant Funds Awarded for Mental Health  
5-Year Total**

**\$500,000**

# Outcome Measures

We are observing increases in ALL outcome measures!

- Increasing student access to treatment is our #1 goal and outcome measure
  - **Capacity of over 115 students to receive in-school therapy**
- HKS Outcome Measures
  - Percent and number of children who displayed signs of developmental improvement in...
    - Communication skills
    - Social skills
    - Self-regulation of emotions
    - & those who maintained appropriate behavior or improved behavior at school
  - **100% of students reported increases in resiliency measures according to UW data**



# Outcome Measures

We are observing increases in ALL outcome measures!\*

- The DPI Grant Outcome Measures\*
  - Total number of student contacts by CMHP and SMHP at each site
    - 384
  - Total number of formal referrals made to mental health providers for treatment
    - 112 school-based (PATH)
    - 27 external referrals
- We also measure\*
  - Students in CMHP/SMHP small groups
    - 68
  - Students receiving classroom presentations
    - 297



\*Data as of 4/1/21

# Trauma-Informed Care & Mental Health Staff Training (3-Year Series)

- 2018-2019

- Adverse Childhood Experiences (ACES)
- Understanding Student Dysregulation/Behaviors
- Building Connections & Compassion Fatigue
- Regulation & the Classroom
- Perspective & Resilience
- Caregiver Capacity

- 2019-2020

- Trauma Overview
- Regulation & SEL
- Supporting Anxiety & Depression
- Review & Putting it all Together

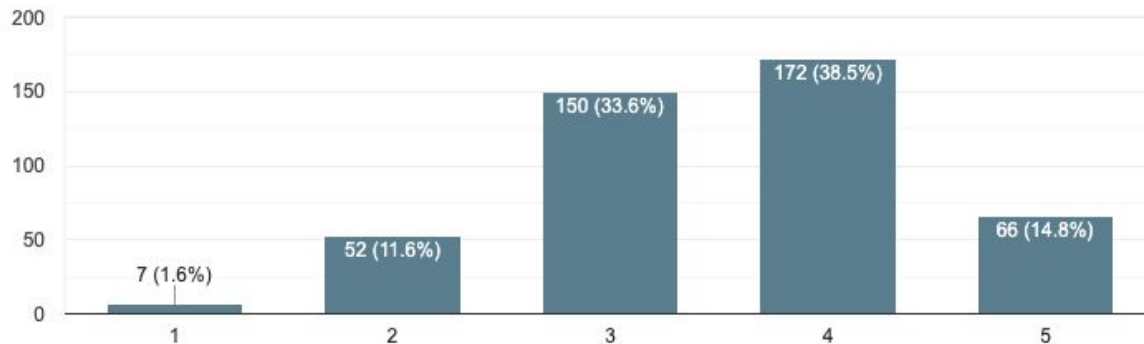
- 2020-2021

- Mental Health First Response
- Building Relationships & Addressing Grief
- Anxiety & Stress Management



PRIOR TO attending the SDW Trauma-Sensitive/ Mental Health training(s), my knowledge and confidence in supporting student behaviors and emotional needs was:

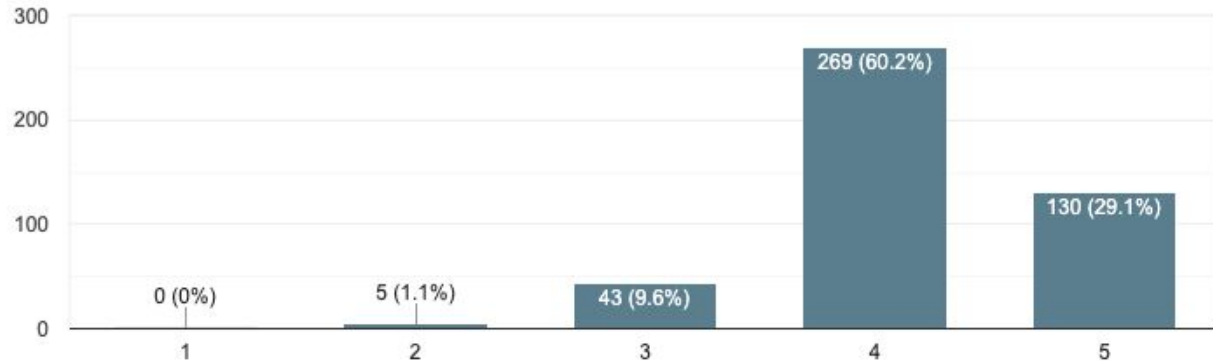
447 responses



*"I feel that these trainings have been very helpful in giving me knowledge and understanding in how students are thinking and feeling. I also appreciate that strategies are shared which I can use with my students."*

Since completing the SDW Trauma-Sensitive/ Mental Health training(s), my knowledge and confidence in supporting student behaviors and emotional needs is:

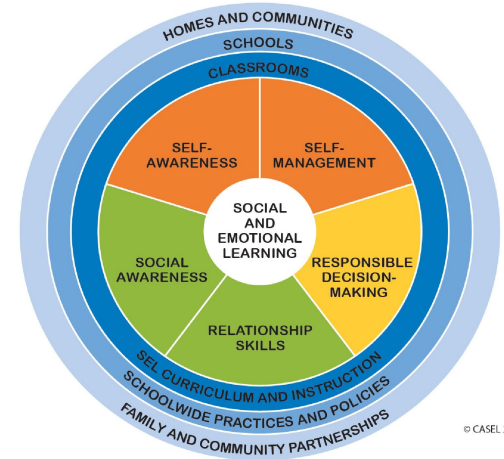
447 responses



*"This PD was some of the best PD offered by the district because of the consistency across the district. It provided a systematic way for all teachers to receive the same information. I think that PD like this should be continued."*

# Other Areas Supporting Mental Health

- SEL (Social-Emotional Learning)
  - Second Step 4K-8
  - Character Strong Pilot currently in 9th grade
- ATODA Supports & Services (Alcohol, Tobacco, and Other Drug Abuse)
  - Substance Use Prevention Committee, Peers for Peers, Too Good for Drugs, Prime for Life, Elementary AODA grant programming
- Suicide Prevention and Intervention
- Student Services Support
  - Universal (Tier 1), Selected (Tier 2), Intensive (Tier 3)
  - 20 School Counselors
  - 18 School Psychologists
  - 10 School Social Workers
- SST (Student Services Team Meetings)
- PST (Problem Solving Team Meetings)
- YRBS - Data Source



# **SDW Continuum of Mental Health Supports**

\*Pathways of support and specific interventions used across our system

**New as of December 2021!**

care/solace.

Calming the Chaos of Mental Health Care





# Where are we going?

- Maintain current grants
- \$165,000 recently awarded for mental health
  - Must be spent down by 2024
- Fill unfilled mental health navigator position
  - Focus on supporting eAchieve & Hispanic students/families
- Continue integration with student services supports and school systems

Questions?

**What questions do you have for us?**