

One Disaster Away From Disaster

Financially Precarious Households in Waukesha County

1



WHO WE ARE

- We focus on key community issues.
- We invest in programs to impact these issues.
- We partner with agencies and community supporters.
- We create needle-moving community change.



2

STRATEGIC FOCUS AREAS

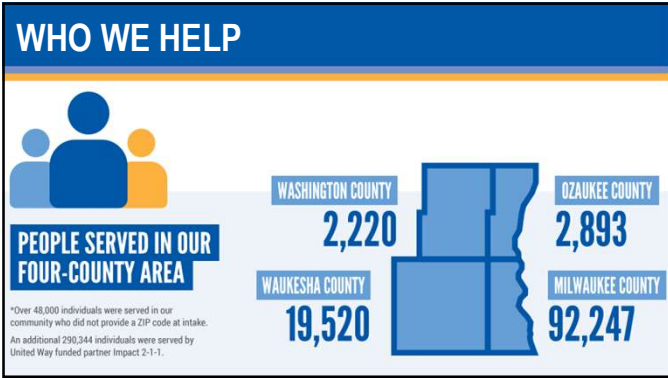
Health: Improving people's health and safety.
Education: Helping students achieve their potential.
Financial Stability: Promoting financial capability and independence.

United Way helps improve the Health, Education, and Financial Stability of our entire community, with a strong and consistent focus on Racial Equity.

Together, we are building a more inclusive, resilient, and equitable community.



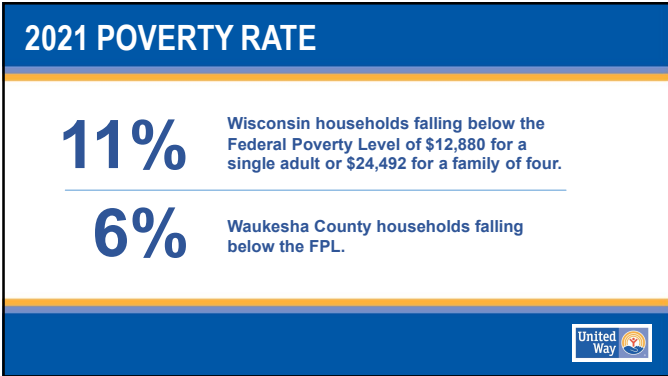

3



4

GIVE. ADVOCATE. VOLUNTEER.


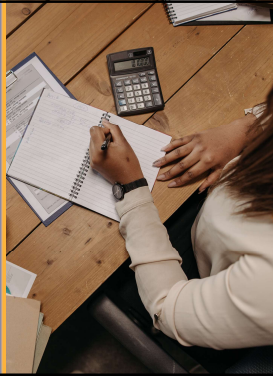
5



6

LIMITS OF FPL MEASURE

- Not based on the cost of today's household necessities
- Not localized
- Makes no accommodation for the age of household members
- CPI (which informs FPL) accounts for what consumers regardless of income level commonly buy, diluting price changes in narrower sample of basic goods lower income families stick to

7


ALICE®

ASSET LIMITED, INCOME CONSTRAINED, EMPLOYED

8

TOTAL COST OF SURVIVAL

ALICE Essentials Index	
Housing	Fair Market Rent at 40 th percentile, utilities included, adjusted for household size and by metro area
Child Care	Registered Family Child Care Homes for one 3-4 year old
Food	USDA Thrifty Food Plan, adjusted for county, household size, and ages
Transportation	Car operating costs, adjusted for household size, member ages, fees, and insurance
Health Care	Employer-based insurance premiums plus OOP for working households, weighted with poor health multiplier, adjusted for household size and ages. Seniors use Medicare Part A and B plus OOP average for top 5 chronic diseases



9

TOTAL COST OF SURVIVAL

ALICE Essentials Index (continued)	
Technology	Smartphone plan with 10GB of data for each adult in a household
Miscellaneous	Cost overruns estimated at 10% of budget, excluding taxes, to cover one-time unanticipated costs
Taxes	Federal, state, and local taxes owed on the amount of income to cover the Survival Budget, as well as tax credits like Child Tax Credit (CTC) and Child and Dependent Care Tax Credit (CDCTC)



10

WAUKESHA SURVIVAL BUDGET, 2021

	Single Adult	2 Adults, 1 Infant, 1 Preschooler
Housing	\$621	\$846
Utilities	\$154	\$292
Child Care	--	\$1,799
Food	\$430	\$1,174
Transportation	\$328	\$805
Health Care	\$240	\$759
Technology	\$75	\$110
Miscellaneous	\$185	\$578
Tax Payments	\$305	\$1,217
Tax Credits	\$0	-\$1267
Monthly Total	\$2,338	\$6,313

Hourly, that's **\$14.03 for a single adult or \$37.88 for a family of four.**

Annually, that's **\$28,056 for a single adult or \$75,756 for a family of four.**

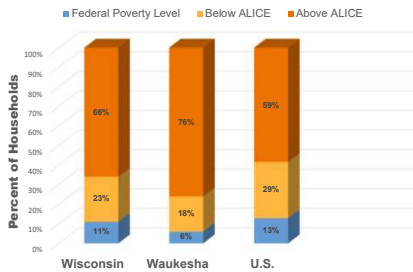
These are more than **double** the FPL of \$12,880 for single adults and **triple** the family of four FPL of \$24,492.



11

HIDDEN NEED

2021 Households Above and Below the ALICE Threshold



18% of Waukesha County households earn above the FPL, but below the ALICE Survival Budget.

That means 1 in 4 county households earns less than the cost of essentials for their family.




12

2021 POVERTY RATE

24%

Waukesha County households earn less than needed to pay for their basic needs. That's 40,100 homes who don't have enough.

Across Wisconsin, 1 in 3 households falls below the ALICE threshold.




13

STABILITY OUT OF REACH

ALICE Household Stability Budget, Waukesha County, Wisconsin, 2021				
Monthly Costs and Credits	Single Adult	Two Adults	Two Adults Two Children	Two Adults Two Children Two Child Care
Housing - Rent	\$1,020	\$1,184	\$1,978	\$1,978
Housing - Utilities	\$154	\$239	\$292	\$292
Child Care	\$0	\$0	\$729	\$2,280
Food	\$642	\$1,192	\$2,112	\$1,827
Transportation	\$813	\$1,013	\$1,277	\$1,277
Health Care	\$208	\$474	\$675	\$675
Technology	\$125	\$160	\$160	\$160
Miscellaneous	\$296	\$426	\$722	\$849
Savings	\$296	\$426	\$722	\$849
Tax Payments	\$613	\$783	\$1,627	\$2,047
Tax Credits	\$0	\$0	(\$865)	(\$1,267)
Monthly Total	\$4,167	\$5,897	\$9,429	\$10,967
ANNUAL TOTAL	\$50,004	\$70,764	\$113,148	\$131,604
Hourly Wage	\$35.00	\$35.38	\$56.57	\$45.80

Even modest improvements in living quality like better housing, higher quality food, or saving 10% for emergencies or life goals are out of reach for many households.

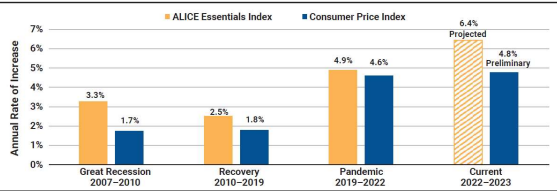
Only 42% below the ALICE threshold have any retirement savings, compared to 72% above the line.



14


WORSE THAN ADVERTISED

Figure 3. Annual Rate of Inflation by Time Period, United States, 2007-2023



Time Period	ALICE Essentials Index	Consumer Price Index
Great Recession 2007-2010	3.3%	1.7%
Recovery 2010-2019	2.5%	1.8%
Pandemic 2019-2022	4.9%	4.6%
Current 2022-2023	6.4% (Projected)	4.8% (Preliminary)

Note: ALICE Essentials Index rates for 2022 and 2023 are projections, as shown with the crosshatched columns; for details, see Appendix. CPI 2023 is preliminary (based on data through March 2023).



15

WORKING, BUT NOT THRIVING

Of the 20 most common occupations in WI in 2021, 65% paid less than \$20 per hour.

Occupation	2021 Median Hourly Wage in WI	Median Wage Change from 2019	Workers Below ALICE Threshold
Truck Drivers	\$20.64	9%	16%
Personal Care Aides	\$13.65	16%	43%
Cashiers	\$11.52	7%	36%
Registered Nurses	\$36.81	7%	5%
Fast Food Workers	\$10.91	13%	38%
K-8 Teachers	\$29.08	6%	7%
Nursing Assistants	\$16.71	12%	33%
Teaching Assistants	\$14.99	1%	33%
Receptionists	\$16.93	12%	18%

19

CHILD CARE CRISIS

Recommended vs. Actual Child Care Cost Burden

\$1,452 is Waukesha County's monthly cost for infant care

Type of Household	2021 Annual Income	2021 Monthly Income	Child Care Budget Capped at 7%
Waukesha County Median	\$94,171	\$7,848	\$549
ALICE Survival Income (1 adult, 1 infant)	\$48,660	\$4,055	\$284
Recommended Income	\$248,887	\$20,741	\$1,452
Child Care Worker	\$24,066	\$2,005 (\$11.57 hourly)	\$140

A whopping 44% of child care workers in Wisconsin are below the ALICE threshold!

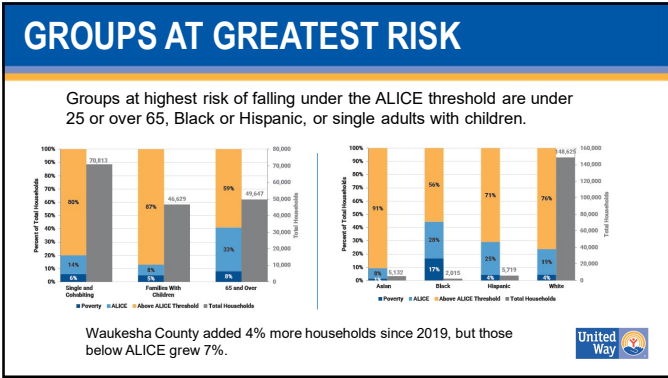
20

AREAS MOST BELOW ALICE LINE

As a county, Waukesha has a lower rate of families struggling to stay afloat than the state and national averages – but the distribution is not uniform.

Town	2021 Total Households	% ALICE & Poverty
Butler village	835	56%
Pewaukee village	4,370	40%
Lannon village	619	38%
Brookfield town	3,308	37%
Waukesha city	30,012	35%

21



22




23

WHAT HELPS


- Free VITA volunteer tax preparation
- Comprehensive school-based supports
- Housing navigation, coordinated entry, and eviction prevention
- Affordable, accessible broadband and devices
- Access to health care, including mental health care
- Child care to enable parental success
- Food pantries
- Transportation aid
- Resource referral
- Collective advocacy for solutions

24



ADVOCATE FOR ALICE

- Read deeper into the ALICE research and methodology, and use the interactive data tool at www.UnitedWayWI.org/ALICE
- Learn more about Waukesha's local United Way efforts at UnitedWayGMWC.org



25

LIVE UNITED

Thank you.

Greater Milwaukee & Waukesha County
United Way



26
