



RETZER NATURE CENTER'S WINTER WILDLIFE EXPLORATION

Self-Guided Hike (Orange Loop = .75 miles)

This self-guided hike will take you through woodlands, a prairie, pine woodlots and to the top of a glacial drumlin with a spectacular view of Retzer and lands to the south, east and west.

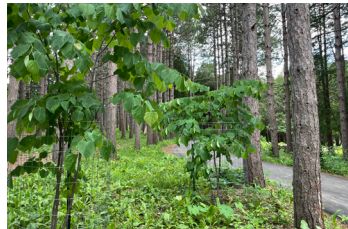


- 1 Trailhead**
Natural snowshoes on a Snowshoe Hare

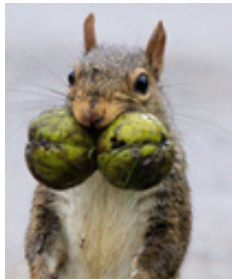


- 2 Winter Birds**
Black-capped Chickadee, one of Wisconsin's year-round residents

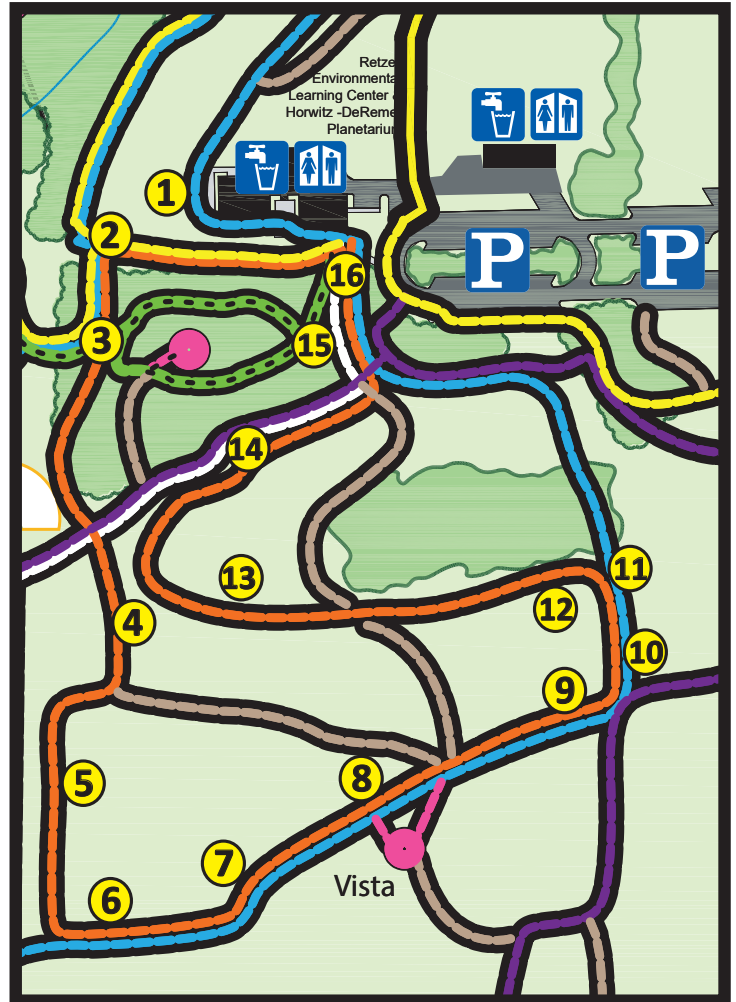
- 3 Deer Browse**
Fencing to protect newly planted trees from being eaten



- 4 Squirrel Food**
Shagbark Hickory nuts provide a feast for squirrels and other animals



- 5 Watersheds**
Water flows:
-> Pebble Creek
-> Fox River
-> Illinois River
-> Mississippi River
-> Gulf of Mexico



6

Subnivean Zone
The "below snow" zone

7

Glacial Drumlin
Part of the "Delafield Drumlin Field"





8 Who's Scat is That?
White-tailed Deer Scat visible in the snow



9 Prairie
Tall Grass prairie habitat for many birds and animals



10 Predator & Prey
Tall Grass prairie habitat for many birds and animals



11 Marcescence
Leaves remaining on trees through the winter



12 Stump Circle
Take a break and look around for squirrel homes in the tree tops



13 Footprints
The track pattern of Cottontail Rabbit footprints



14 Northern White Cedar Trees
The tree is a favorite of White-tailed Deer in the winter



15 The Pines
Red Pine needle bundle (2 needles) and pine cones



16 Trail End
Thanks for hiking at Retzer Nature Center today. Check out the Blue or Purple Trails for more hiking and snowshoeing!



[@WaukeshaCountyParks](https://www.facebook.com/WaukeshaCountyParks)
[@RetzerNatureCenter](https://www.facebook.com/RetzerNatureCenter)

[@WaukeshaCoParks](https://www.twitter.com/WaukeshaCoParks)

[@WaukeshaCountyParks](https://www.instagram.com/WaukeshaCountyParks)

www.waukeshacountyparks.com