

ENROLLED ORDINANCE 168-9

REPEAL AND RECREATE SECTION 17-1 OF THE COUNTY CODE
OF ORDINANCES TO ADOPT THE WAUKESHA COUNTY
COMPREHENSIVE EMERGENCY MANAGEMENT PLAN

WHEREAS, the United States Department of Homeland Security developed the National Response Framework and the Comprehensive Preparedness Guide 101 Version 2.0 providing updated planning guidance and format changes, and

WHEREAS, the State of Wisconsin converted the State Emergency Operations Plan to the Wisconsin Emergency Response Plan in conformity with the National Response Framework in accordance with Wisconsin Statute section 323.13(1)(b), and

WHEREAS, Wisconsin Statute section 323.14(1)(a)(1) requires counties to develop and adopt an emergency management plan and program that is compatible with the state plan of emergency management, and

WHEREAS, through Enrolled Ordinance 164-69, Waukesha County amended Section 17-1 of the Code of Ordinances Waukesha County to adopt the Waukesha County Emergency Operations Plan as the official emergency management plan and program for Waukesha County, and

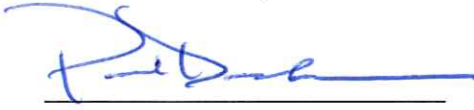
WHEREAS, the Emergency Management Division of the Waukesha County Department of Emergency Preparedness recently worked with a multi-disciplinary and multi-jurisdictional coalition of agencies to develop the Waukesha County Comprehensive Emergency Management Plan to meet the state and federal requirements including compliance with the National Incident Management System.

THE COUNTY BOARD OF SUPERVISORS OF WAUKESHA COUNTY ORDAINS that Section 17-1 of the Code of Ordinances is repealed and recreated to read: “The Waukesha County Comprehensive Emergency Management Plan, which is on file in the offices of the Department of Emergency Preparedness, the County Board, the County Executive and the County Clerk, is hereby adopted as the official emergency management plan and program for Waukesha County.”

IT IS FURTHER ORDAINED that this ordinance shall be effective upon approval and publication and the provisions of this ordinance shall be included and incorporated in the Code of Ordinances of the County of Waukesha, Wisconsin.

REPEAL AND RECREATE SECTION 17-1 OF THE COUNTY CODE
OF ORDINANCES TO ADOPT THE WAUKESHA COUNTY
COMPREHENSIVE EMERGENCY MANAGEMENT PLAN

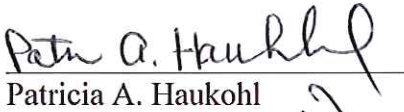
Presented by:
Executive Committee



Paul L. Decker, Chair



Dave Falstad



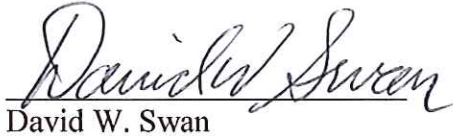
Patricia A. Haukohl



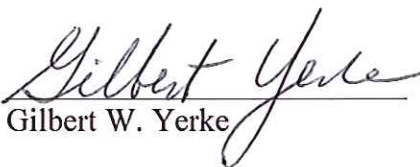
James A. Heinrich



Duane E. Paulson



David W. Swan



Gilbert W. Yerke

Approved by:
Judiciary Committee



Dave Falstad, Chair



Janel Brandtjen



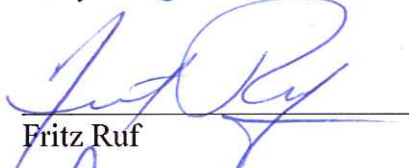
Michael A. Crowley



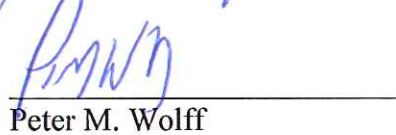
Keith Hammitt



Larry Nelson



Fritz Ruf



Peter M. Wolff

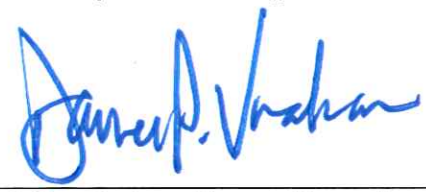
The foregoing legislation adopted by the County Board of Supervisors of Waukesha County, Wisconsin, was presented to the County Executive on:

Date: 4/24/2013, 
Kathleen Novack, County Clerk

The foregoing legislation adopted by the County Board of Supervisors of Waukesha County, Wisconsin, is hereby:

Approved: X

Vetoed: _____

Date: 4-30-13, 
Daniel P. Vrakas, County Executive



To: Richard Tuma, Director Emergency Preparedness
Judiciary and Law Enforcement Committee
Waukesha County Board of Supervisors
From: William F. Stolte, Coordinator, Emergency Management
Date: February 5, 2013
RE: Executive Summary of the Comprehensive Emergency Management Plan

Federal and State legislation requires every political jurisdiction in the State of Wisconsin to develop and adopt an plan and program for emergency management consistent with the State and Federal plans. The United States Department of Homeland Security issued the Comprehensive Preparedness Guide 101 Version 2.0, (CPG 101) to provide guidance on the fundamentals of planning and development of emergency management plans. According to CPG 101, emergency management plans must coordinate planning efforts in the areas of prevention, protection, response, recovery and mitigation. Current strategies at the national level focus on “whole community” involvement in risk and consequence management.

“CPG 101 uses the following contextual definitions for incident, state, and local government throughout the document:

Incident means an occurrence or event—natural, technological, or human-caused—that requires a response to protect life, property, or the environment (e.g., major disasters, emergencies, terrorist attacks, terrorist threats, civil unrest, wildland and urban fires, floods, hazardous materials [HAZMAT] spills, nuclear accidents, aircraft accidents, earthquakes, hurricanes, tornadoes, tropical storms, tsunamis, war-related disasters, public health and medical emergencies, other occurrences requiring an emergency response).

• **State** means any state of the United States, and includes the District of Columbia, the Commonwealth of Puerto Rico, the Virgin Islands, Guam, American Samoa, the Commonwealth of the Northern Mariana Islands, a Native American Tribe or organization, an Alaska native village or Regional Native Corporation, and any possession of the United States.

• **Local government** means:

A county, municipality, city, town, township, local public authority, school district, special district, intrastate district, council of governments (regardless of whether the council of governments is incorporated as a not-for-profit corporation under state law), regional or interstate government entity, or agency or instrumentality of a local government

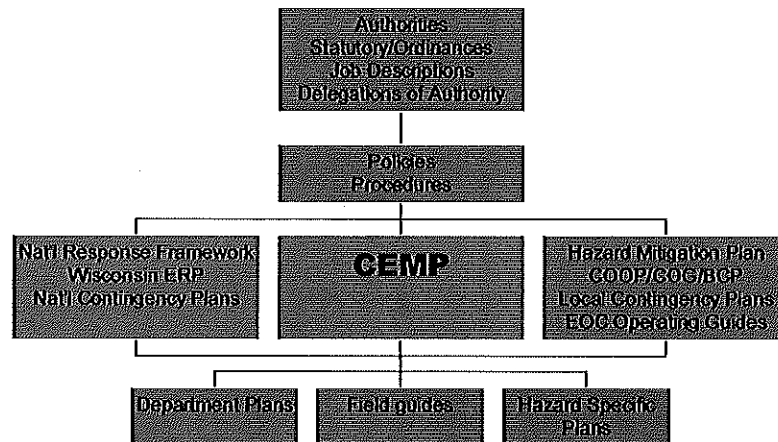
A rural community, unincorporated town or village, or other public entity.”



Waukesha County Emergency Management
1621 Woodburn Road
Waukesha, WI 53188
(262) 548-7580 FAX (262) 548-7313



Development of the Waukesha County Comprehensive Emergency Management Plan (CEMP) began at the Southeast Wisconsin regional level as a collaborative project to promote consistency and cooperation between the eight participating counties (Jefferson, Kenosha, Milwaukee, Ozaukee, Racine, Walworth, Washington, and Waukesha). The planning process engaged numerous representatives from County and Municipal government, as well as private and non-governmental organizations. The CEMP integrates with other existing plans and protocols to provide a comprehensive, but flexible, adaptable framework for assignment of roles and responsibilities, and facilitate decision-making.



Organization of the CEMP follows a logical flow from a Basic Plan applicable to all agencies and entities, providing an Introduction, explanation of the Planning Situational Assumptions, Concept of Operations, Assignment of Responsibilities, Financial Management strategies, Attachments, including a detailed glossary of pertinent terminology. The next sections consist of Annexes dealing with Mitigation, Preparedness, Response, Recovery, and an overarching Business Continuity of Operations Plan (COOP). The major portion of the CEMP encompasses Annex III – Response Functions separated into Emergency Support Functions (ESF). The Waukesha County CEMP provides twenty-three distinct Emergency Support Functions as noted below.

- | | |
|---|--|
| 1 Transportation | 12 Energy and Utilities |
| 2 Communications and Information Technology | 13 Law Enforcement and Security |
| 3 Public Works | 14 Long Term Community Recovery |
| 4 Fire Fighting | 15 Public Information |
| 5 Information Analysis and Planning | 16 Hospital and Medical Services |
| 6 Mass Care, Emergency Assistance, Housing and Human Services | 17 Volunteer and Donations Management |
| 7 Resource Support | 18 Animal and Veterinary Services |
| 8 Public Health | 19 Functional and Access Needs |
| 9 Search and Rescue | 20 Fatality Management |
| 10 Hazardous Materials | 21 Damage Assessment |
| 11 Agriculture and Natural Resources | 22 Public Protection (Warning, Evacuation and Shelter) |
| | 23 Debris Management |



Each Emergency Support Function follows the same structure as listed below:

- Title Page to identify the subject of the ESF and primary responsible agency(ies)
- Quick Reference identifies potential local, state, and federal support agencies
- Primary Agency(ies) Detailed Tasks:
 - Pre-Emergency
 - Emergency
 - Emergency Operations Center
 - Recovery
- Support Agency Tasks
- Supporting Documents/Attachments

Annex V is the overarching Business Continuity of Operations Plan (COOP) for Waukesha County that applies to all County agencies and departments. Individual County agencies must still develop, adopt and maintain their own internal Business Continuity Plans consistent with Annex V. Annex V consists of the following information:

- Section I: Executive Summary
- Section II: Risk Assessment
- Section III: Recovery Teams Structure
- Section IV: Management Recovery Team
- Section V: Administration Recovery Team
- Section VI: Business Continuity Plan Testing
- Section VII: Exhibits and Reports
- COOP Process Flow Chart

The CEMP will undergo regular testing through exercises on an annual basis. County Emergency Management coordinates a number of simulated emergency tests or exercises to validate the CEMP on an annual basis. The Homeland Security Exercise Evaluation Program (HSEEP) provides a comprehensive methodology for development, conduct and evaluation of emergencies. County Emergency Management rigorously follows the HSEEP guidelines as part of the County's efforts to remain compliant and consistent with the National Incident Management System.

County Emergency Management is responsible for coordinating annual reviews of the CEMP and incorporating updates as necessary to address emerging and changing technologies, capabilities, protocols and other relevant factors. The County Emergency Management Office, County Executive's Office, and the County Board Office maintain printed copies of the CEMP available for review upon request. County Emergency Management also maintains electronic portable document format (pdf) versions posted on E-Sponder. E-Sponder is a secured, web-based information sharing site provided to the Counties by the State of Wisconsin.

WAUKESHA COUNTY BOARD OF SUPERVISORS

V

DATE-04/23/13

(ORD) NUMBER-1680008

1 C. SLATTERY.....AYE
3 R. MORRIS.....AYE
5 J. BRANDTJEN.....AYE
7 J. GRANT.....AYE
9 J. HEINRICH.....AYE
11 F. RUF.....AYE
13 P. DECKER.....AYE
15 W. KOLB.....AYE
17 D. PAULSON.....AYE
19 C. CUMMINGS.....AYE
21 W. ZABOROWSKI.....AYE
23 K. HAMMITT.....AYE
25 G. YERKE.....AYE

2 D. FALSTAD.....AYE
4 J. BATZKO.....AYE
6 J. JESKEWITZ.....AYE
8 P. HAUKOHL.....AYE
10 D. SWAN.....AYE
12 P. WOLFF.....AYE
14 P. MEYER.....AYE
16 M. CROWLEY.....AYE
18 L. NELSON.....AYE
20 T. SCHELLINGER....AYE
22 P. JASKE.....
24 D. DRAEGER.....AYE

TOTAL AYES-24

TOTAL NAYS-00

CARRIED_____

DEFEATED_____

UNANIMOUS X

TOTAL VOTES-24

1 REPEAL AND RECREATE SECTION 17-1 OF THE COUNTY CODE
2 OF ORDINANCES TO ADOPT THE WAUKESHA COUNTY
3 COMPREHENSIVE EMERGENCY MANAGEMENT PLAN
4
5

6 WHEREAS, the United States Department of Homeland Security developed the National
7 Response Framework and the Comprehensive Preparedness Guide 101 Version 2.0 providing
8 updated planning guidance and format changes, and
9

10 WHEREAS, the State of Wisconsin converted the State Emergency Operations Plan to the
11 Wisconsin Emergency Response Plan in conformity with the National Response Framework in
12 accordance with Wisconsin Statute section 323.13(1)(b), and
13

14 WHEREAS, Wisconsin Statute section 323.14(1)(a)(1) requires counties to develop and adopt an
15 emergency management plan and program that is compatible with the state plan of emergency
16 management, and
17

18 WHEREAS, through Enrolled Ordinance 164-69, Waukesha County amended Section 17-1 of
19 the Code of Ordinances Waukesha County to adopt the Waukesha County Emergency
20 Operations Plan as the official emergency management plan and program for Waukesha County,
21 and
22

23 WHEREAS, the Emergency Management Division of the Waukesha County Department of
24 Emergency Preparedness recently worked with a multi-disciplinary and multi-jurisdictional
25 coalition of agencies to develop the Waukesha County Comprehensive Emergency Management
26 Plan to meet the state and federal requirements including compliance with the National Incident
27 Management System.
28

29 THE COUNTY BOARD OF SUPERVISORS OF WAUKESHA COUNTY ORDAINS that
30 Section 17-1 of the Code of Ordinances is repealed and recreated to read: "The Waukesha
31 County Comprehensive Emergency Management Plan, which is on file in the offices of the
32 Department of Emergency Preparedness, the County Board, the County Executive and the
33 County Clerk, is hereby adopted as the official emergency management plan and program for
34 Waukesha County."
35

36 IT IS FURTHER ORDAINED that this ordinance shall be effective upon approval and
37 publication and the provisions of this ordinance shall be included and incorporated in the Code
38 of Ordinances of the County of Waukesha, Wisconsin.