



Project Summary – January 3, 2022

Project 2722-08-01

Moorland Road (County O)

W. Cleveland Avenue (County D) to W. National Avenue (County ES)

City of New Berlin | Construction is anticipated to begin in 2025

Project Overview

Waukesha County is planning and designing improvements to Moorland Road between National Avenue and Cleveland Avenue in the City of New Berlin. The road is a key link in the region's transportation system, carrying more than 30,000 vehicles on an average day and providing access to shopping, jobs, schools, and services.

At just over one mile in length, this pavement replacement project will bring Moorland Road up to current safety standards and serve the region's growing traffic volumes. Project details are being determined, and may include

- replacing the existing concrete pavement
- reconfiguring intersections and lanes to improve safety and capacity
- replacing and upgrading traffic signals
- investigating the addition of sidewalks and/or bicycle lanes

It is anticipated that the outside curb line will remain in its current location, with the exception of intersection areas that may require minor widening. Access to businesses and residences along Moorland Road will be maintained during and after construction. This project is being coordinated with similar improvements on Moorland Road between I-94 to I-43.

Project Funding

Reconstructing this segment of Moorland Road is part of the county's capital program. The project is being designed and constructed through the Wisconsin Department of Transportation's (WisDOT) Surface Transportation Program - Urban (STP-U), which allows federal funding for a wide range of transportation-related activities, including projects on higher-function local roads and local safety improvements.

Waukesha County, WisDOT, and the Federal Highway Administration will coordinate and review design and construction. All entities have committed funds to design and build the project. Also, City of New Berlin will participate in funding of requested amenities for the project that may include sidewalks, street lighting, or other features.

Project Schedule

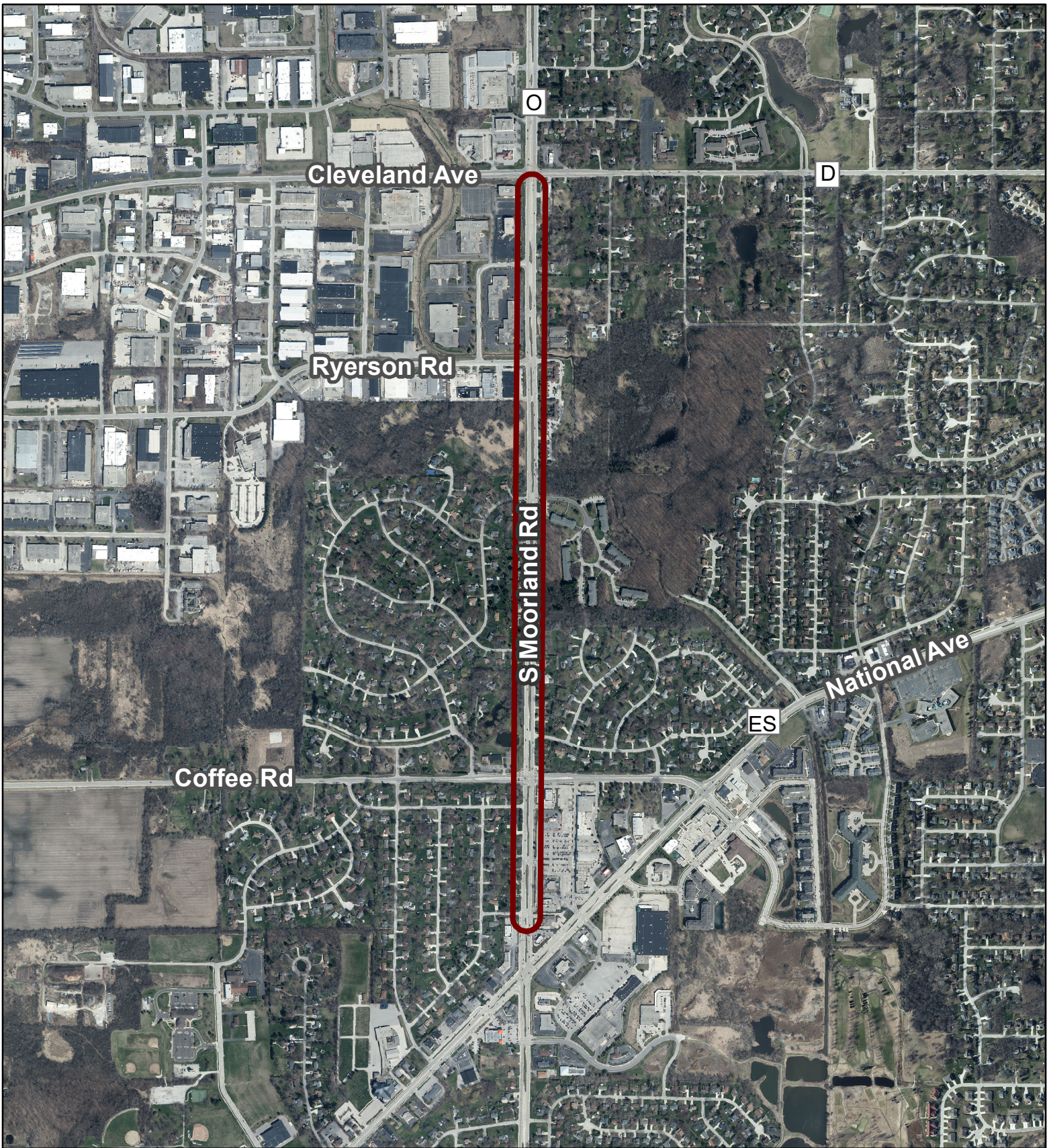
Project Design	Fall 2021 – Fall 2023	
<i>Public Involvement</i>	Public Involvement Meeting 1	Late Winter 2021-22
	Public Involvement Meeting 2	Fall 2022
	Public Involvement Meeting 3	Fall 2024
Construction	Spring 2025 – Fall 2025	

Contact Us

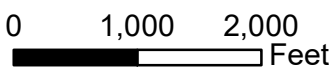
Questions or comments about this project? Reach out to:

Edward Hinrichs, Waukesha County Project Manager at 262-548-7740 or EHinrichs@WaukeshaCounty.gov or

William Schilling, AECOM Project Manager at 414-418-1964 or bill.schilling@aecom.com.



Moorland Road (CTH O)
Cleveland Ave to National Ave
State Project ID 2722-08-01
Waukesha County, WI





2722-08-01

County Highway O • Moorland Rd

National Ave (County Highway ES) to **Cleveland Ave** (County Highway D)
City of New Berlin

Project Overview

In 2021, Waukesha County will begin a study of Moorland Road between CTH ES (National Avenue and CTH D (Cleveland Avenue) in the City of New Berlin. The transportation improvement is being studied to address growing local and regional traffic volumes, and to enhance traffic flow and safety.

This 1.3-mile project involves

- pavement replacement of the existing roadway core of Moorland Road
- bring project area up to current safety standards

Additional improvements may include

- reconfiguring intersections to improve safety and lane capacity,
- replacing traffic signals,
- minor grading,
- storm water improvements,
- investigating the feasibility of including sidewalks and bicycle accommodations on one or both sides of the roadway.

Access to businesses and residential properties adjacent to Moorland Road **will be maintained during construction.**

Project Funding

Reconstructing this segment of Moorland Road is part of Waukesha County's capital program and uses Wisconsin Department of Transportation's (WisDOT) "Surface Transportation Program – Urban" (STP-U), which allows federal funding for a wide range of transportation-related activities, including projects on higher-function local roads not on the State Trunk Highway system and local safety improvements.

On a STP-U project, Waukesha County, WisDOT, and the Federal Highway Administration coordinate and review design and construction. All entities have committed funds to design and construction. Also, City of New Berlin will participate in funding requested amenities for the project that may include sidewalks, street lighting, or other features.

Anticipated Schedule

Summer 2021 to August 2024	Data Gathering and Design
Winter 2021-22	Public Involvement Meeting #1
Fall 2022	Public Involvement Meeting #2
Spring 2023	Real Estate Acquisition
December 2024	Project LET
Spring 2025	Construction

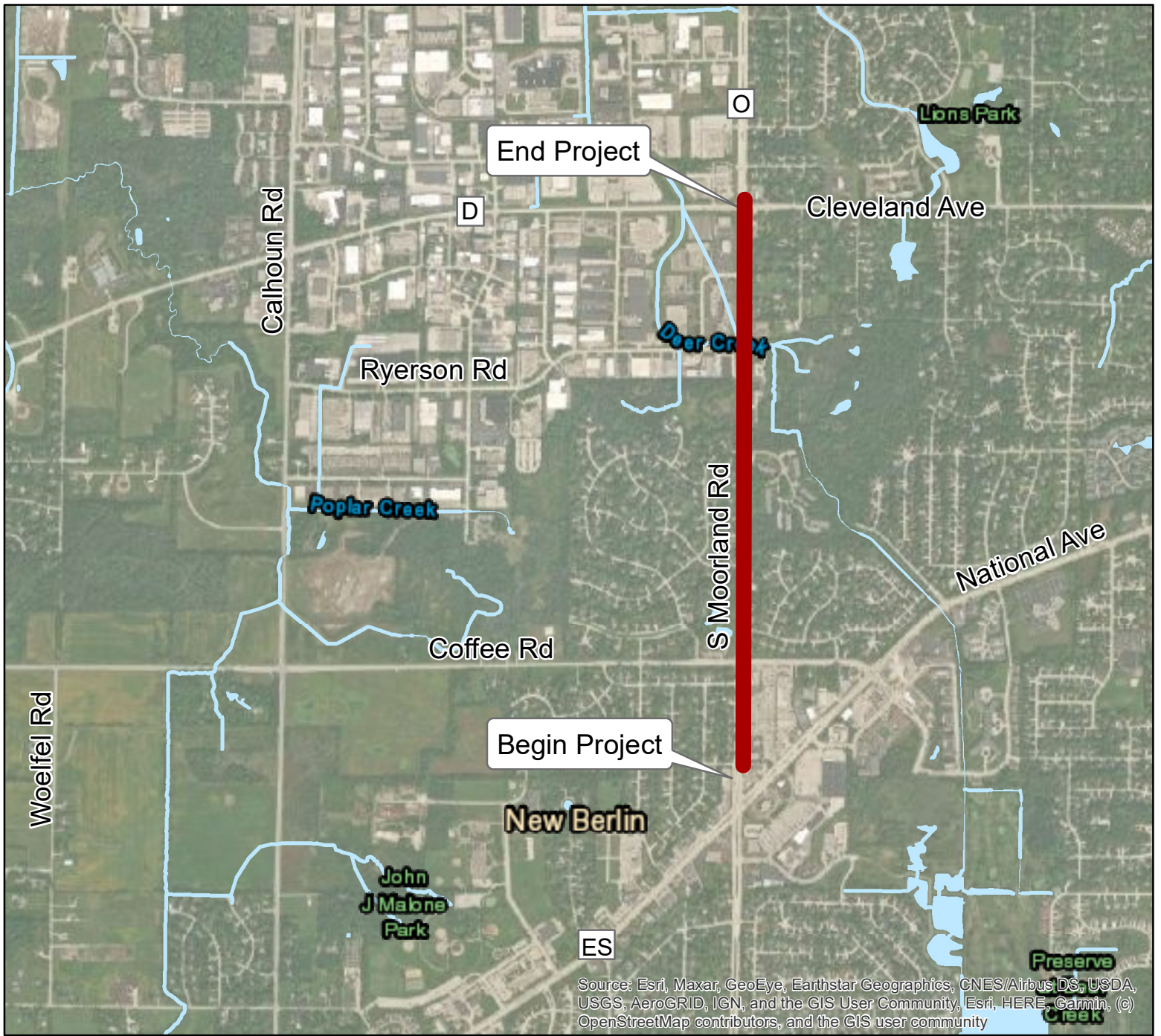
Project Contacts

Ed Hinrichs, P.E.
Project Manager
Waukesha County
262-548-7740

EHinrichs@WaukeshaCounty.gov

William Schilling, P.E.
Project Manager
AECOM
414-944-6080

Bill.Schilling@aecom.com



**Exhibit 2:
 Project Location Map (Project Area)
 CTH O (Moorland Road)
 CTH ES to CTH D
 Local Street
 Project ID 2722-08-01**

