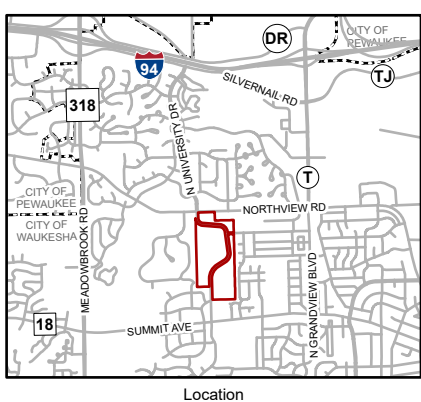


# UW Milwaukee - Waukesha Campus



**MAP 1: STUDY AREA**



Location

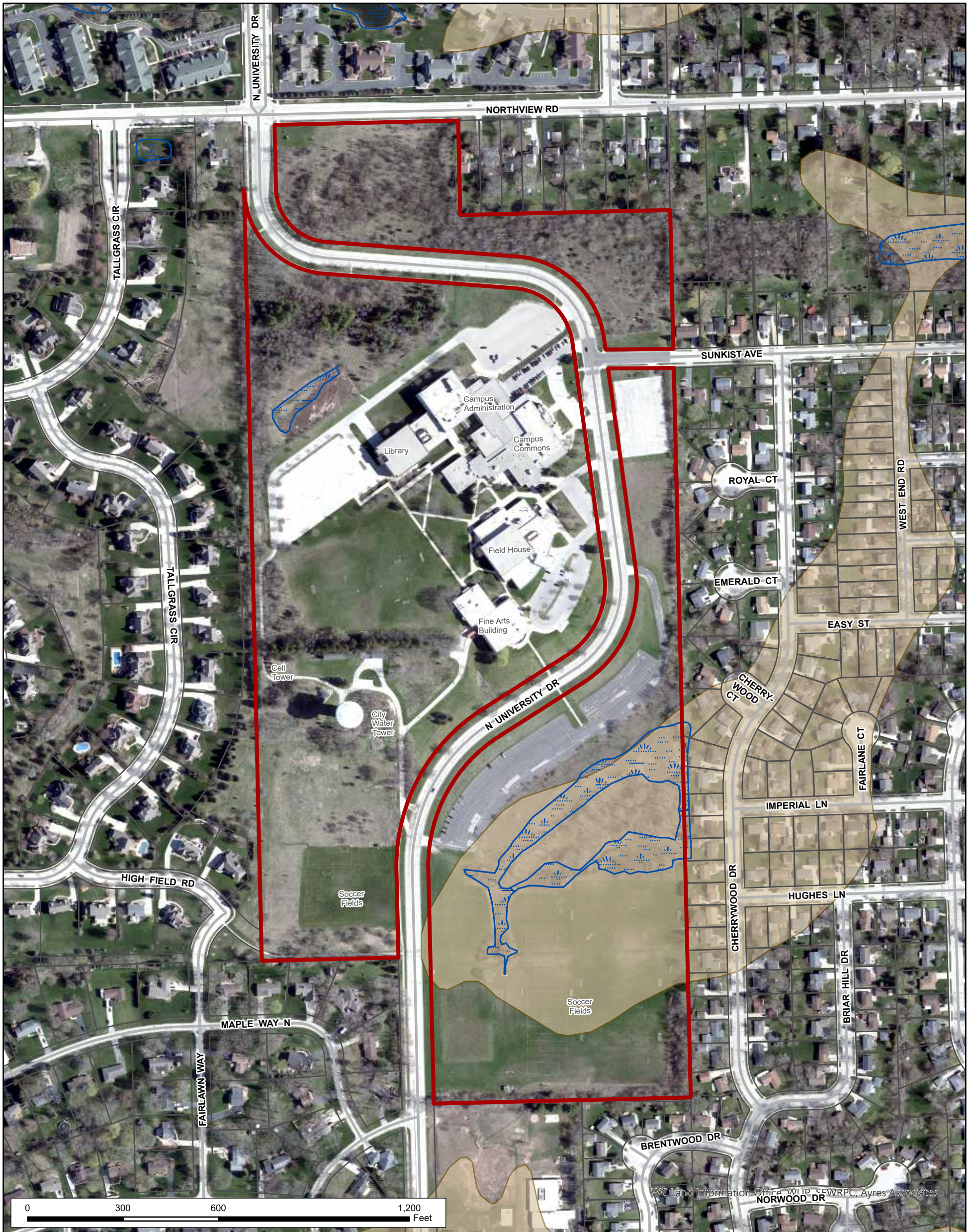


- Subject Lands (75.9 ac)
- Civil Division Boundary
- Parcel Boundary

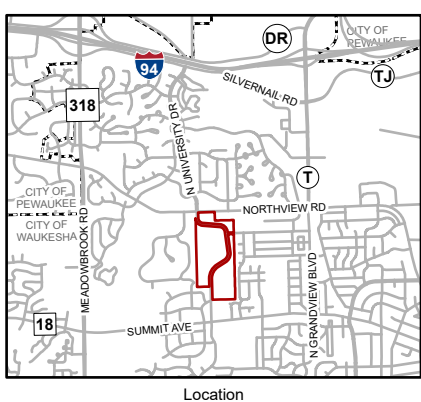




# UW Milwaukee - Waukesha Campus



## MAP 2: NATURAL RESOURCES



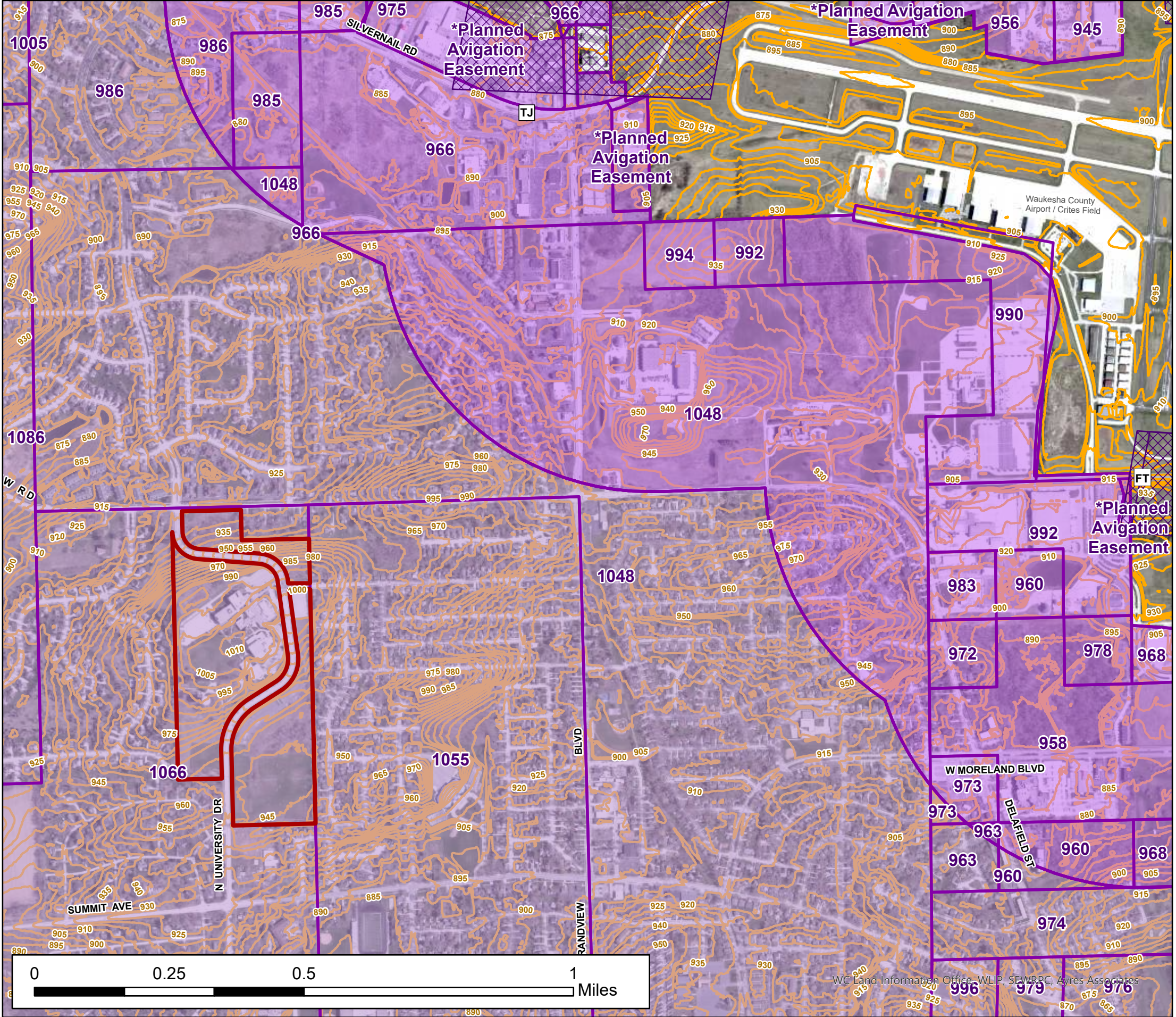
- Subject Lands
- Civil Division Boundary
- Parcel Boundary
- Wetland
- Hydic Soil

Total Acres: 75.9 ac  
 Wetlands: 3.1 ac  
 Hydic Soils: \*9.4 ac (\*not including wetlands)  
 Environmental Corridor: None





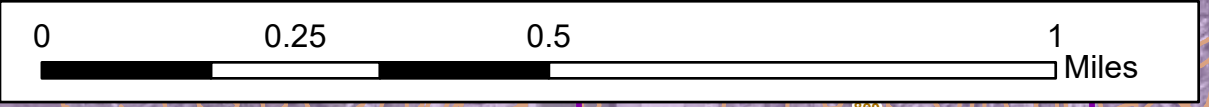
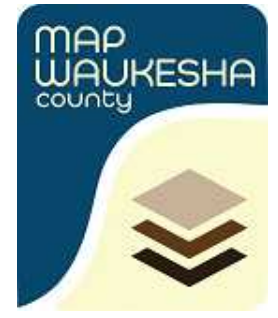
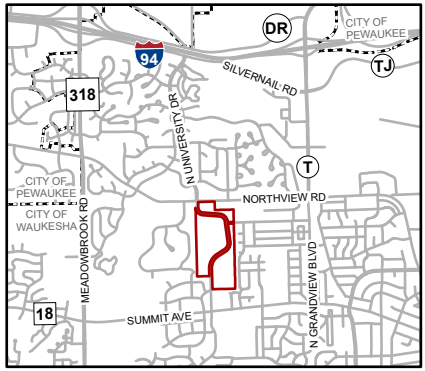
# UW - Milwaukee Waukesha Campus



- Subject Lands
- Civil Division Boundary
- Airport Runway Protection Zone
- Airport Height Zone (Max Building Height amsl)
- Within Half Mile of Airport Boundary
- Within Three Miles of Airport Boundary
- Topography
- Index Contour (5')



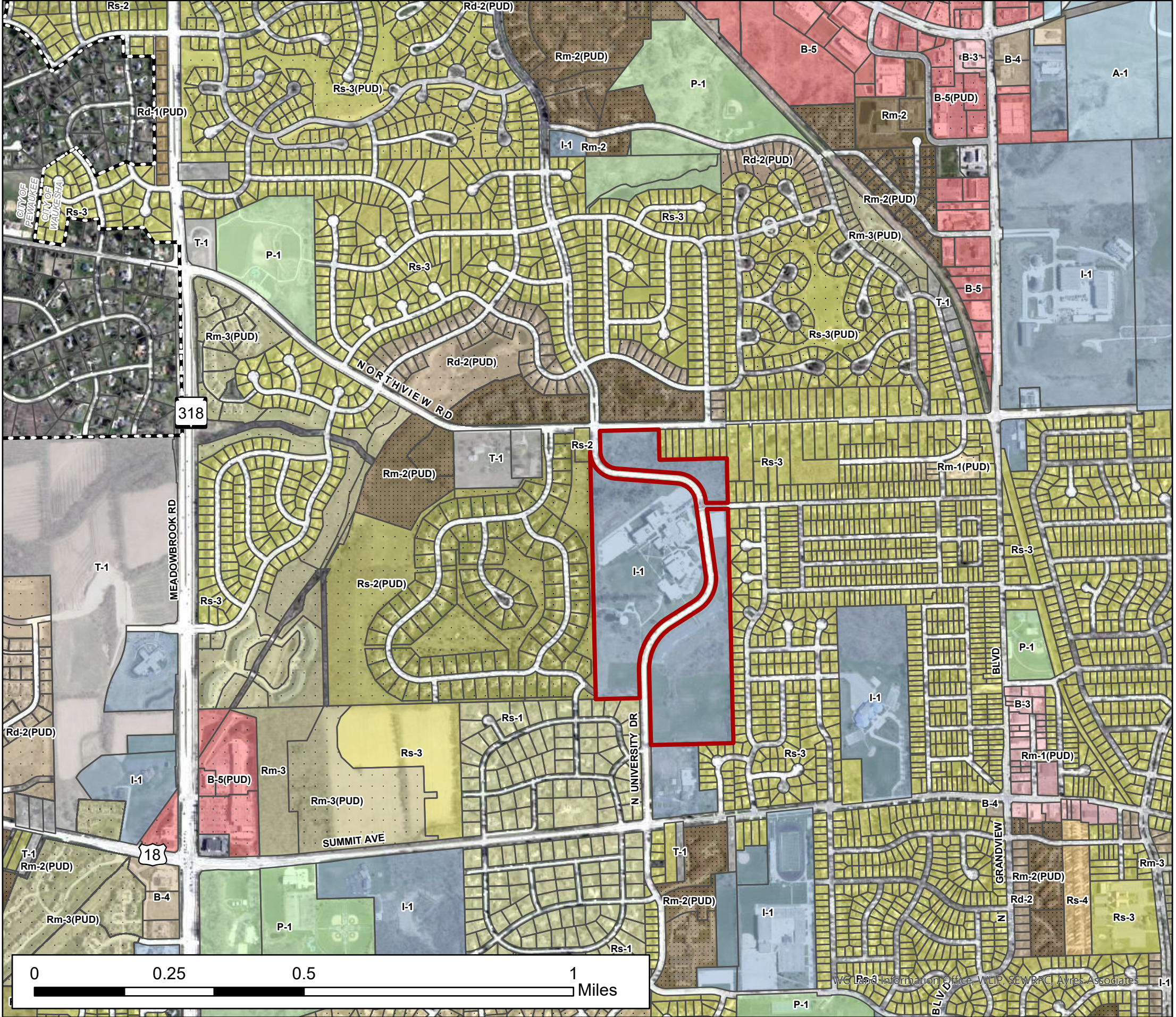
**MAP 3: AIRPORT HEIGHT LIMITS**



WC Land Information Office - WLIP, SEWRPC, Ayres Associates



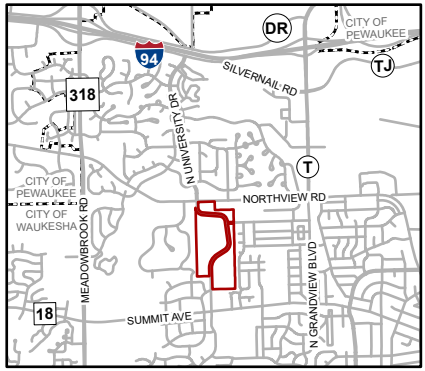
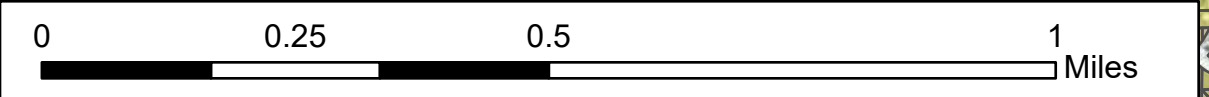
# UW - Milwaukee Waukesha Campus



- Subject Lands
  - Civil Division Boundary
  - Parcel Boundary
- ZONING
- Rd-1(PUD) Two Family Residential
  - Rd-2 Two Family Residential
  - Rd-2(PUD) Two Family Residential Planned Unit
  - Rm-1(PUD) Mixed Residential Planned Unit
  - Rm-2 Multi-Family Residential
  - Rm-2(PUD) Multi-Family Residential Planned Unit
  - Rm-3 Multi-Family Residential
  - Rm-3(PUD) Multi-Family Residential Planned Unit
  - Rs-1 Single Family Residential
  - Rs-2 Single-Family Residential
  - Rs-2(PUD) Single-Family Residential Planned Unit
  - Rs-3 Single-Family Residential
  - Rs-3(PUD) Single-Family Residential Planned Unit
  - Rs-4 Mobile Home Park / Subdivision Residential
  - B-3 General Business
  - B-4 Office and Professional
  - B-5 Community Business
  - B-5(PUD) Community Business Planned Unit
  - I-1 Institutional
  - A-1 Airport
  - P-1 Park
  - T-1 Temporary



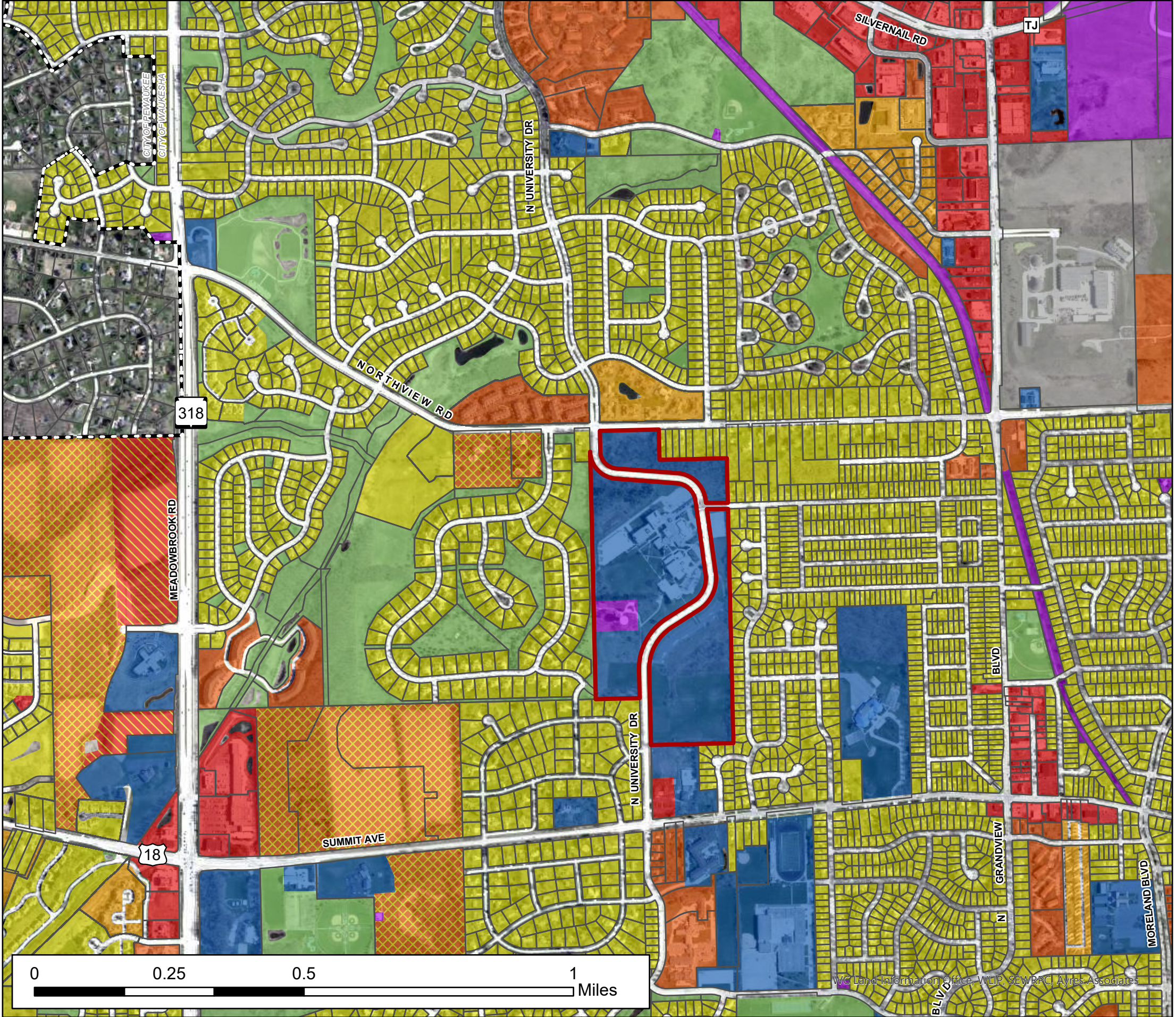
**MAP 4: Zoning**



Waukesha Information Office, WLP, SEWRPC, Ayres Associates



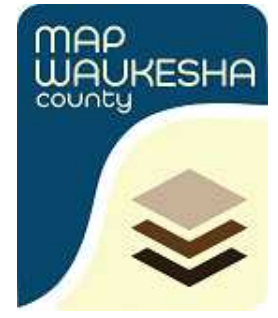
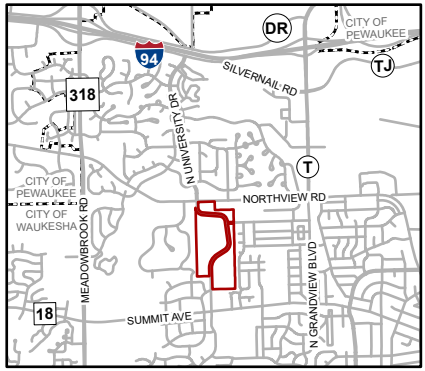
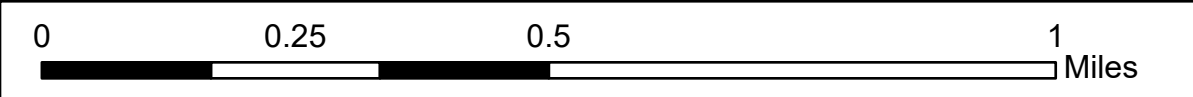
# UW - Milwaukee Waukesha Campus



- Subject Lands
- Civil Division Boundary
- Parcel Boundary
- City Land Use
  - Residential Detached (RD)
  - Residential Attached (RA)
  - Residential Multi-Unit (RM)
  - Residential Flexible (RF)
  - Mixed Residential Commercial (MRC)
  - Commercial (C)
  - Industrial (I)
  - Civic and Institutional (CIV)
  - Public Parks and Recreation (P); Open Space (OS)
  - Utilities, Transportation, and Communications (UTC)



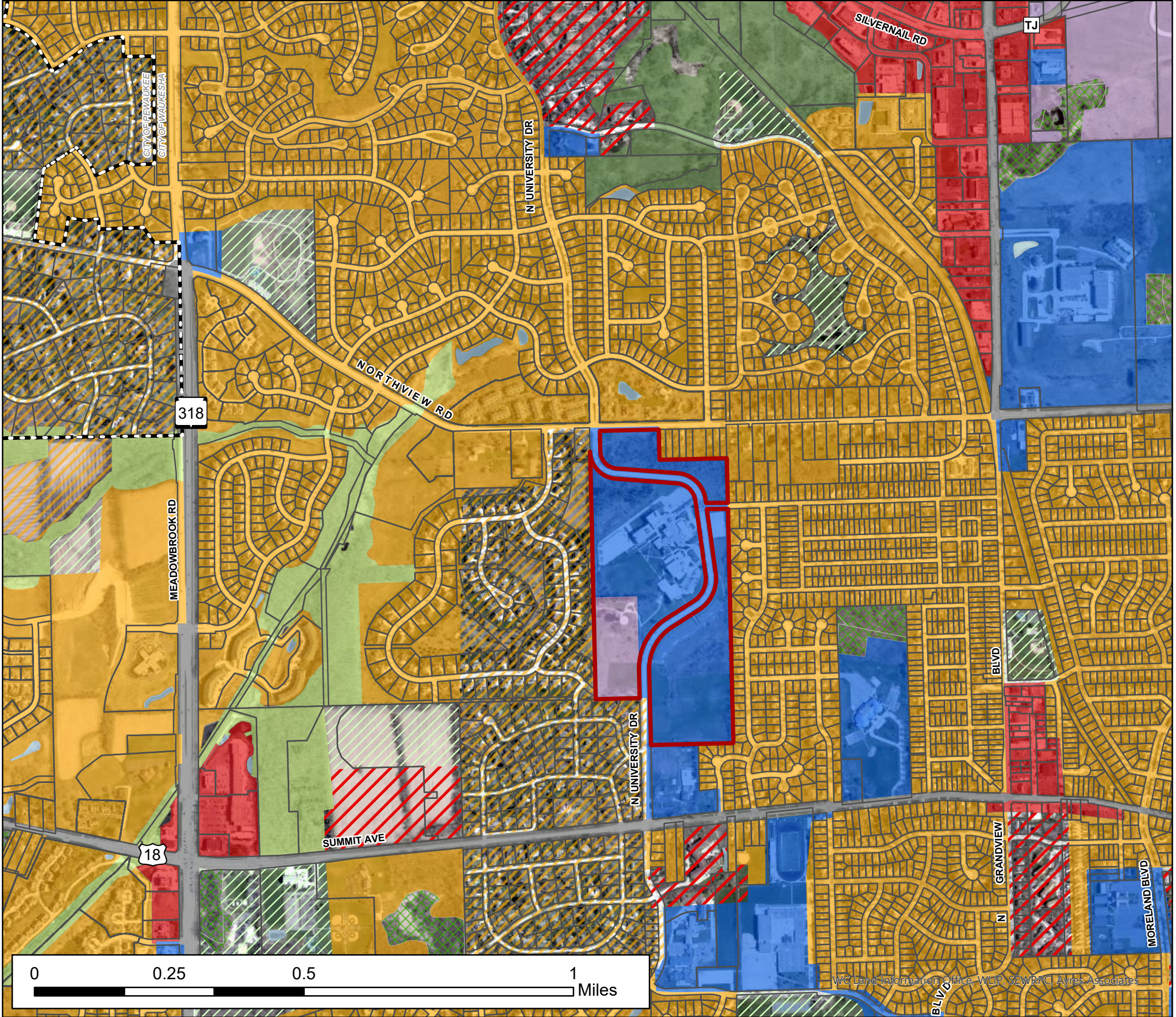
**MAP 5: City Land Use**



Waukesha County Land Information Office, WLIP, SEWRPC, Ayres Associates



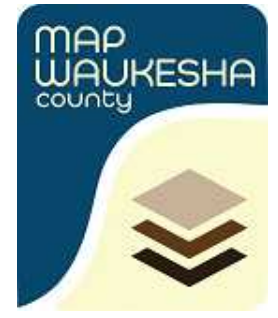
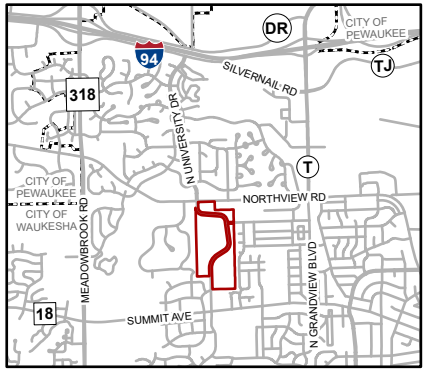
# UW - Milwaukee Waukesha Campus



- Subject Lands
- Civil Division Boundary
- Parcel Boundary
- County Development Plan
  - High Density Residential (<6,000 sf/du)
  - MDR (6,000 - 19,000 sf/du)
  - LDR (20,000 sf - 1.4 ac/du)
  - SDR I (1.5 - 2.9 ac/du)
  - Primary Environmental Corridor
  - Secondary Environmental Corridor
  - Isolated Natural Resource Area
  - Recreational
  - Commercial and Office Park
  - Governmental and institutional
  - Transportation, Communication and Utilities
  - Highway and Railway Rights of Way
  - Surface water



**MAP 5: County Land Use**

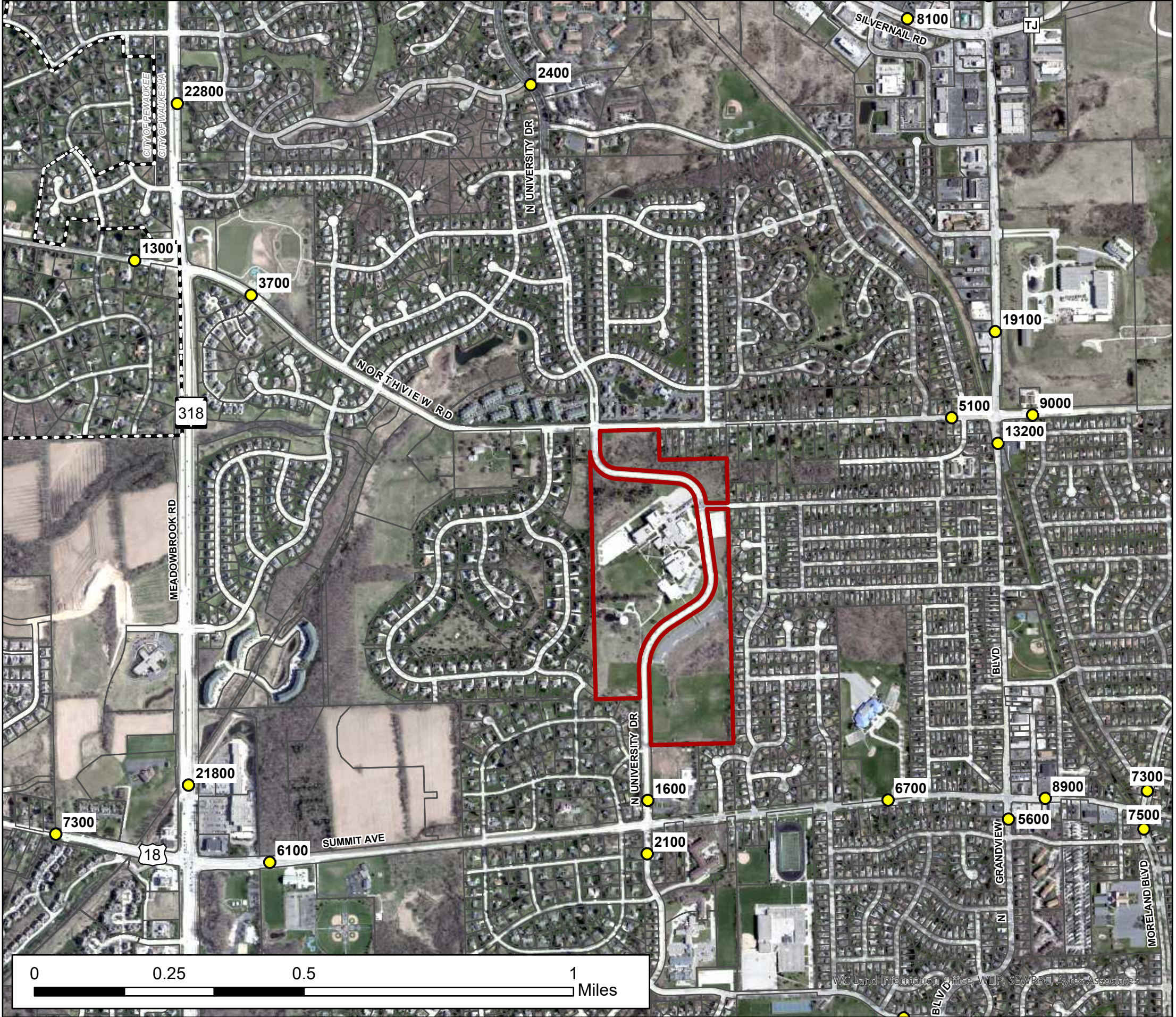






Waukesha County Dept. of Parks & Land Use  
Land Resources Division - Land Information System  
May 2024

WC Land Information Office, WLIP, SEWRPC, Ayres Associates



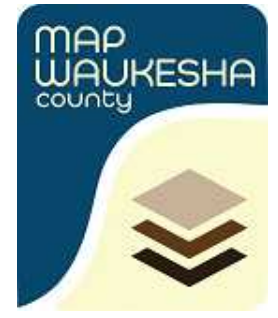
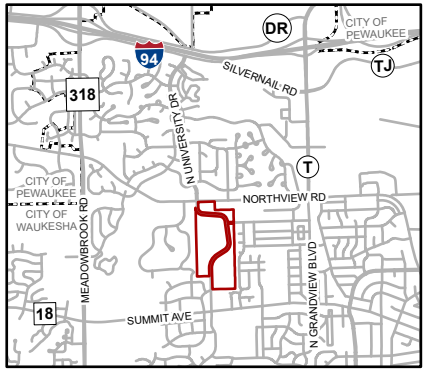
# UW - Milwaukee Waukesha Campus



-  Subject Lands
-  Civil Division Boundary
-  Parcel Boundary
-  Traffic Counts

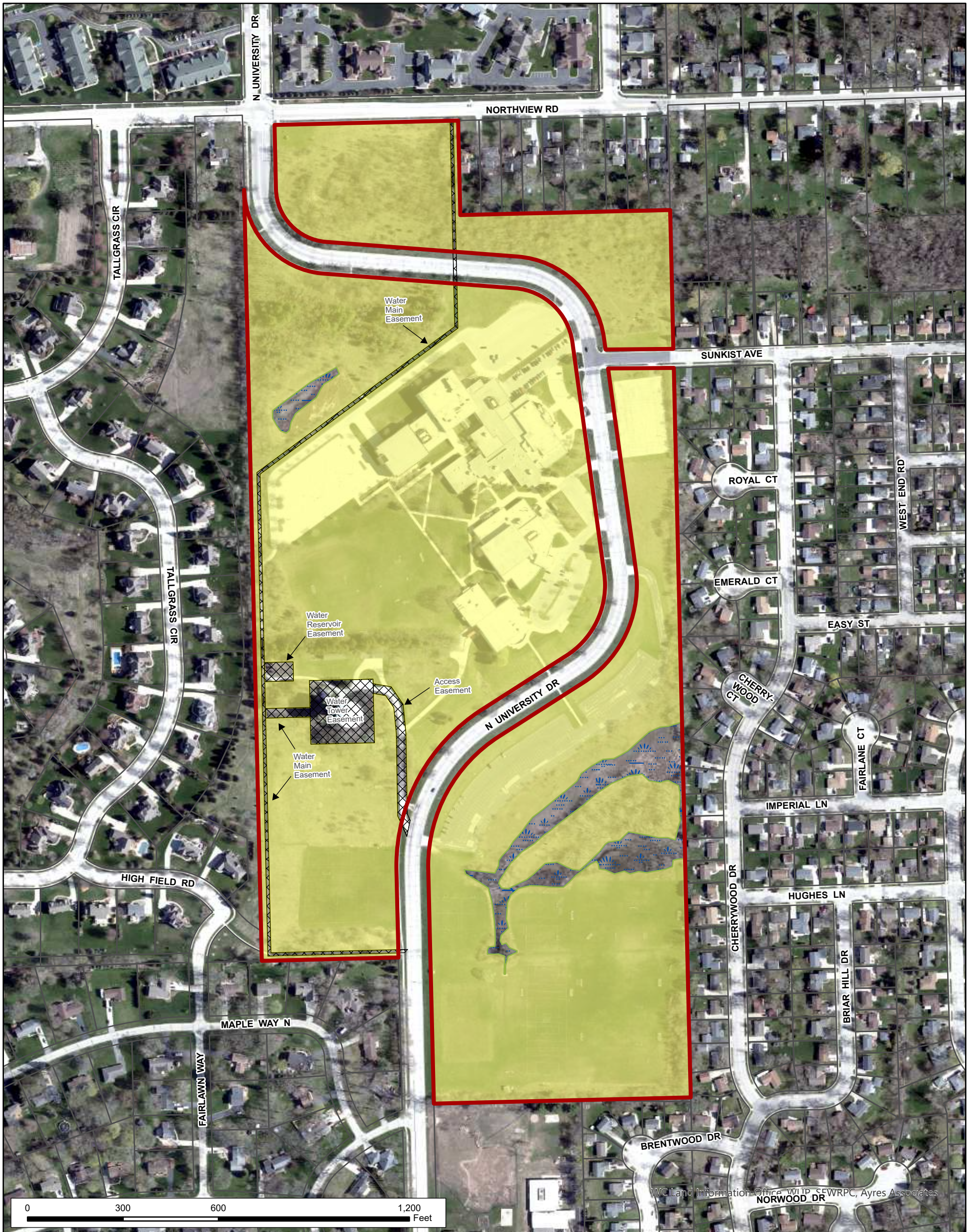


**MAP 6: Traffic Counts**

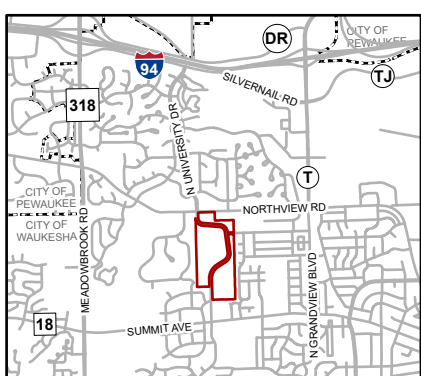




# UW Milwaukee - Waukesha Campus



**MAP 7: DEVELOPABLE AREA**



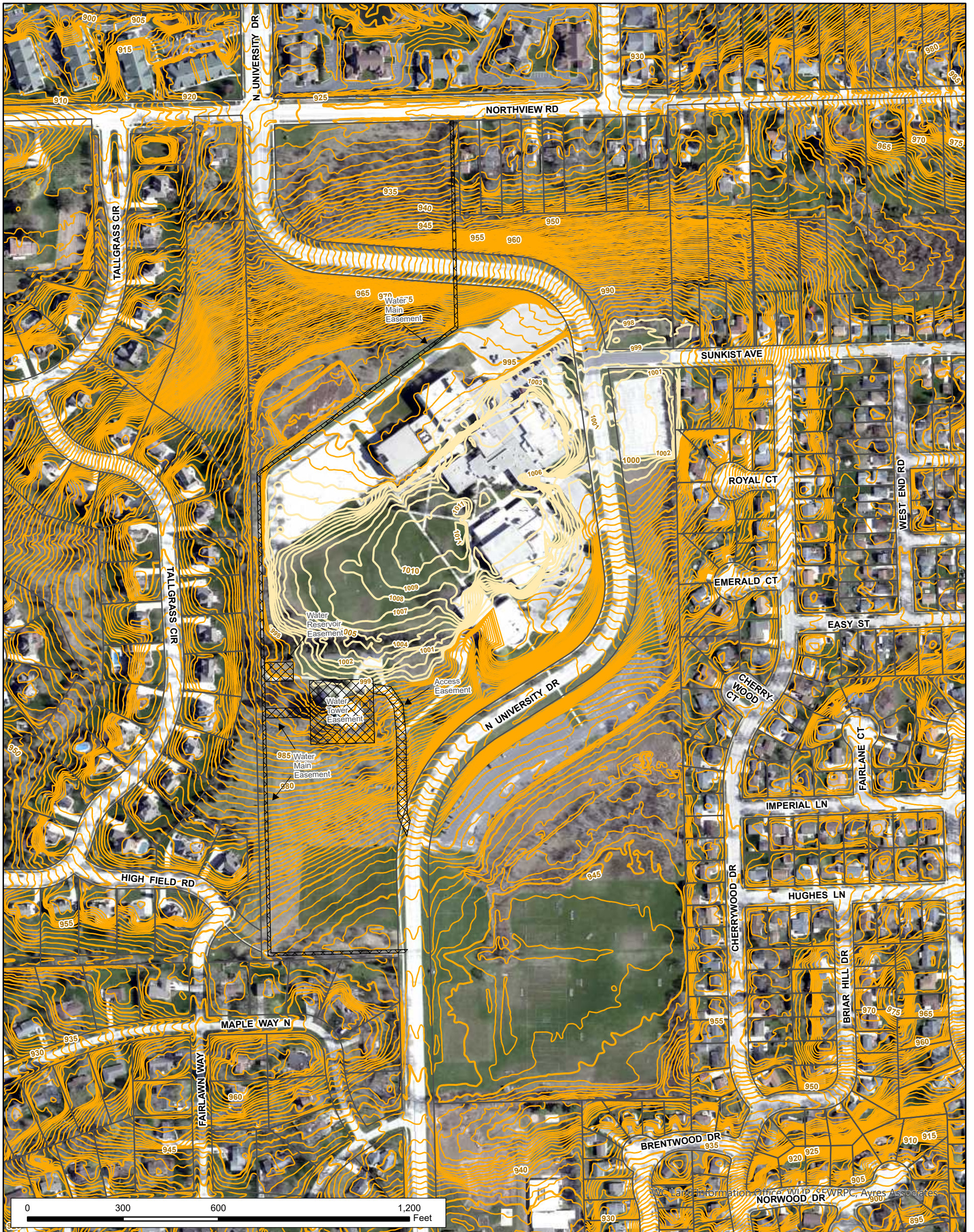
- Subject Property
- Civil Division Boundary
- Parcel Boundary
- Developable Lands
- Easements
- Wetland

Total Acres: 75.9 ac  
 Developable Acres: 71.4 ac  
 Easements: 1.4 ac  
 Wetlands: 3.1 ac

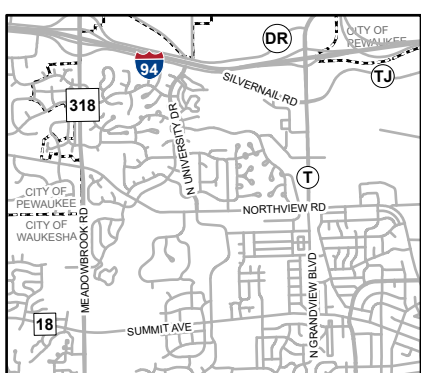




# UW Milwaukee - Waukesha Campus



**MAP 8: TOPOGRAPHY**



- Subject Property
- Civil Division Boundary
- Parcel Boundary
- Easements
- Elevation 998' or Higher

