



# Main St and Bluemound Rd Signal Improvement



CTH T (Main Street) and  
CTH JJ (Bluemound Road)

## YOU'RE INVITED: PUBLIC INVOLVEMENT MEETING

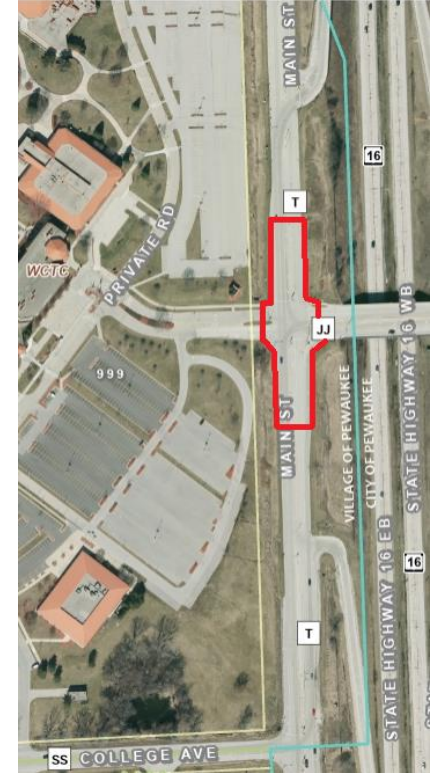
**Date:** Tuesday, April 8, 2025

**Time:** 4:30 pm – 6:30 pm

**Location:** Waukesha County Technical College  
800 Main Street – Building S - AJN Center  
Pewaukee, WI 53072

The Waukesha County Department of Public Works invites you to a public involvement meeting to discuss improvements to the intersection of Main Street (CTH T) and Bluemound Road (CTH JJ). The meeting will follow an open house format. Attendees may stop in at their convenience and view exhibits, meet with project staff, ask questions, and provide feedback. The project team encourages property and business owners, interested citizens, and other stakeholders to attend the meeting.

The project will make geometric changes to the intersection of CTH T (Main Street) and CTH JJ (Bluemound Road). The purpose of the project is to upgrade traffic signal equipment and realign turning lanes in the existing roadway to improve traffic safety. The focus of this meeting will be to hear the community's input regarding roadway design alternatives. The alternatives being presented were developed using design criteria required by the Wisconsin Department of Transportation for use on projects that will utilize federal funding. We are looking for feedback from project stakeholders on design elements including pedestrian accommodations, access modifications, and right of way/construction impacts. Construction is planned to begin in 2027.



# Main St and Bluemound Rd Improvement



CTH T (Main Street) and  
CTH JJ (Bluemound Road)

Exhibits illustrating the recommended alternative can be reviewed at the following website starting April 15, 2025:

<https://www.waukeshacounty.gov/DPW/ENG/cth-t-and-jj/>

Comments on the project will be welcomed until May 2, 2025. Comments may be provided via USPS mail or email to the contact listed below or by calling the individual directly.

## FOR MORE INFORMATION, CONTACT:

Ryan Hilgendorf, P.E.  
Waukesha County  
262-548-7740

[rhilgendorf@waukeshacounty.gov](mailto:rhilgendorf@waukeshacounty.gov)

Brett Wallace, P.E.  
Waukesha County  
(262) 548-7740

[bwallace@waukeshacounty.gov](mailto:bwallace@waukeshacounty.gov)



Waukesha County  
Department of Public Works  
515 W. Moreland Blvd.  
Waukesha, WI 53188