



# Public Involvement Meeting



County J and County FT Intersection Improvement Project

August 2024


The Waukesha County Department of Public Works is proposing to reconstruct the intersection of County J (Pewaukee Road) and County FT (Northview Road) in the City of Waukesha. Proposed improvements include replacing the existing pavement, traffic signals, and reconfiguring the intersection to improve driver visibility and safety. You are invited to attend an in-person public involvement meeting to learn about the project, get your questions answered, and provide comments for the project team.

## We Are Seeking Your Input!

Join us at our open-house public involvement meeting. Your participation is invaluable as we aim to improve our community's infrastructure.

 **Date:** Thursday, September 12

 **Time:** 4:30-6:30 p.m.

 **Location:** Waukesha County Highway Operations  
1641 Woodburn Road  
Waukesha, WI 53188

*Free parking will be available onsite.*

*Hearing and visually impaired individuals may request accommodations by contacting the project manager.*

## Can't Make It?

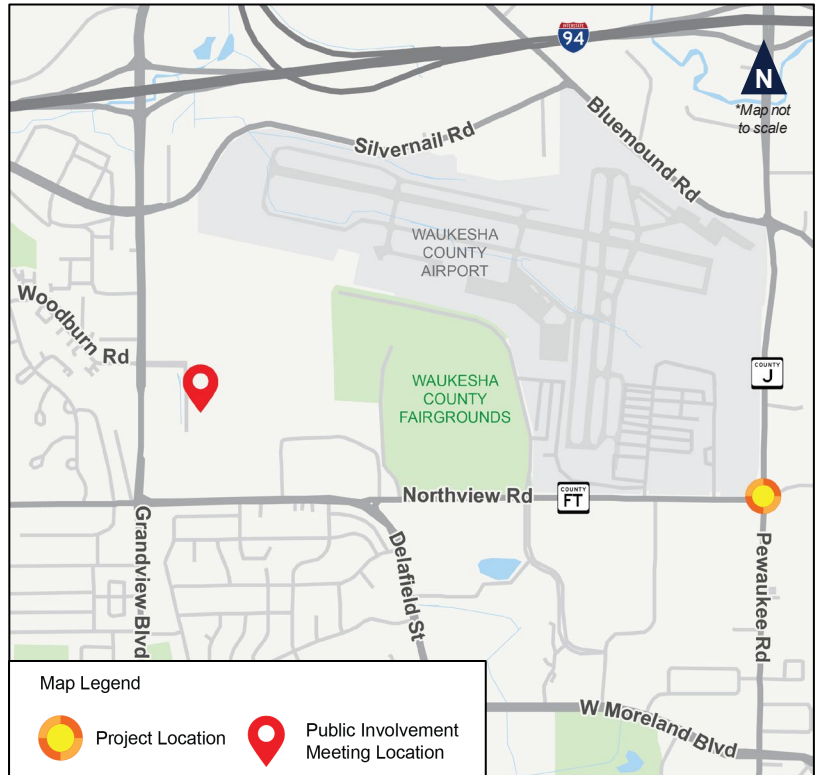
Mail the accompanying comment form to the project manager by September 26, 2024.

For more information on this project scan the QR code or visit the website below:

<https://www.waukeshacounty.gov/DPW/ENG/j-and-ft-intersection/>



Project ID: 2780-03-03



*The project team thanks you in advance for your cooperation throughout this project!*

## Project Contact Information:

**Ryan Hilgendorf**  
Project Manager  
Waukesha County, Department of Public Works  
(262) 548-7746  
[rhilgendorf@waukeshacounty.gov](mailto:rhilgendorf@waukeshacounty.gov)

**Katie Nakles**  
Project Manager  
EMCS, Inc.  
(414) 939-7022  
[knakles@emcsinc.com](mailto:knakles@emcsinc.com)



# Public Involvement Meeting Handout

## County J and County FT Intersection Improvement Project

Project ID: 2780-03-03

Waukesha County

Thursday, September 12, 2024

4:30 – 6:30 p.m.

Waukesha County Highway

Operations Facility

1641 Woodburn Road

Waukesha, WI 53188

## Purpose of the Public Involvement Meeting

Welcome and thank you for joining today's public involvement meeting. This event is the first of two open-house-style meetings hosted by the Waukesha County Department of Public Works and their consultant, EMCS, Inc. for the County J and County FT project. We invite you to explore the project concepts, engage with our team members, and share questions or comments. Your feedback is crucial and valued throughout the design process, helping us create a project that serves both the traveling public and the local community.

## How to Share Comments

- Talk with project staff at the meeting or complete a meeting comment form
- Mail handwritten comments to the mailing address listed below by **September 26, 2024** or leave them in a comment box tonight
- Download, complete, and mail/email the fillable comment form from the website:

<https://www.waukeshacounty.gov/DPW/ENG/j-and-ft-intersection/>

- Call or email the project contacts listed below

SCAN ME

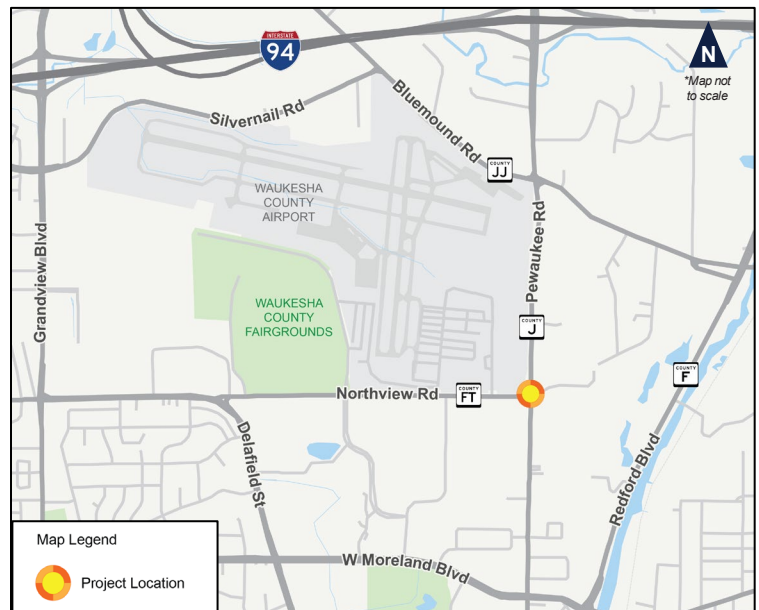


TO VISIT THE  
PROJECT WEBSITE

**Katie Nakles**  
Project Manager  
EMCS, Inc.  
(414) 939-7022  
[knakles@emcsinc.com](mailto:knakles@emcsinc.com)

**Ryan Hilgendorf**  
Project Manager  
Waukesha County Department of Public Works  
(262) 548-7746  
[rhilgendorf@waukeshacounty.gov](mailto:rhilgendorf@waukeshacounty.gov)

**Mailing Address**  
EMCS, Inc.  
1300 West Canal Street  
Suite 200  
Milwaukee, WI 53233



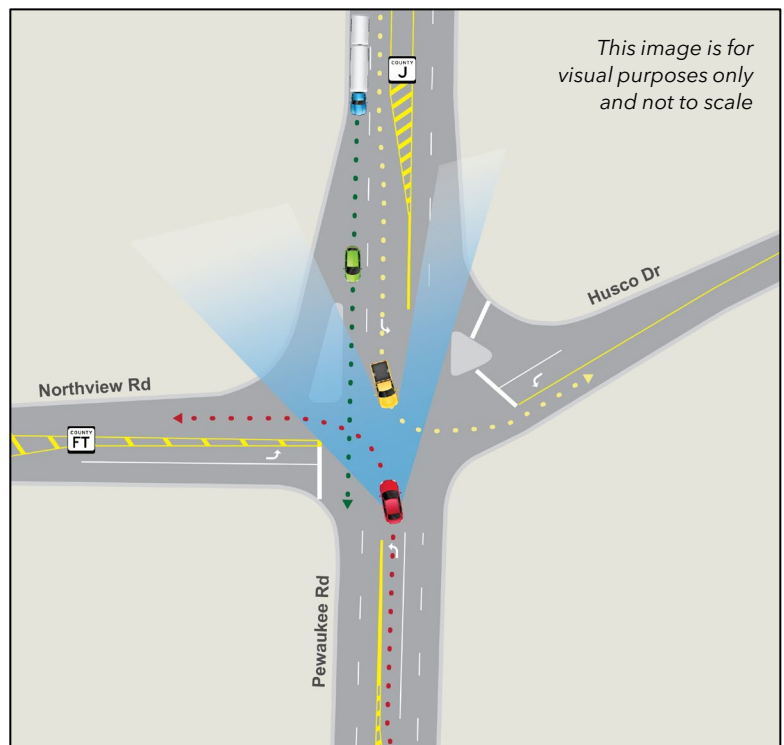
## Project Background

The Waukesha County Department of Public Works is proposing to reconstruct the intersection of County J (Pewaukee Road) and County FT (Northview Road) in the city of Waukesha (see **Figure 1**). County J is a vital north-south traffic route connecting local businesses, municipalities, and the I-94 corridor in Waukesha County. Its intersection with County FT has a history of angle crashes between traffic from the northbound left-turn lane and the southbound through lane. Between 2017 and 2021, 16 angle crashes occurred in this manner, 11 of which involved injuries.

The intersection’s current alignment is causing drivers to have difficulty seeing around opposing left-turning vehicles (see **Figure 2**). Traffic signal visibility may also play a factor. This project proposes to redesign and reconstruct the intersection of County J and County FT to improve driver visibility, safety, and accommodate growing traffic volumes.



**Figure 1:** Project Limits



**Figure 2:** Existing intersection in its current alignment and the visibility troubles that can occur.

### Did you know?

County J has a posted speed limit of 45 mph north of the County FT intersection. At this speed, it would require a **minimum** of 425 feet of distance to bring a vehicle to a complete stop. That does not account for longer driver reaction times, road conditions, or weather.



## Budget and Funding

This project has an estimated construction cost of \$1,400,000. It received approval from the Wisconsin Department of Transportation (WisDOT) to receive federal funding as part of the Highway Safety Improvement Program (HSIP). Waukesha County will be responsible for 10% of the cost, with 90% coming from federal funds through the HSIP.

## Proposed Improvements

Redesign and reconstruct the intersection of County J and County FT to have positive offset left turn lanes (see **Figure 4**). This design allows for better visibility for drivers making left turns and reduces the likelihood of their view being obstructed by an oncoming vehicle. Other improvements to be completed:

- Construct raised medians on the north, south, and west legs of the intersection to provide physical separation from opposing traffic
- Replace approximately 0.25 miles of the existing pavement on County J and approximately 0.10 miles of existing pavement on County FT to address deteriorating conditions
- Replace existing traffic signals
- Replace impacted storm sewers

Construction is anticipated for 2027.

## Anticipated Timeline

**Mar. 2024:** Initial surveys & environmental studies

**Summer/Fall 2024:** Data gathering and design

**Sept. 2024:** Public involvement meeting #1

**Oct. 2024:** Submittal of initial plans & reports

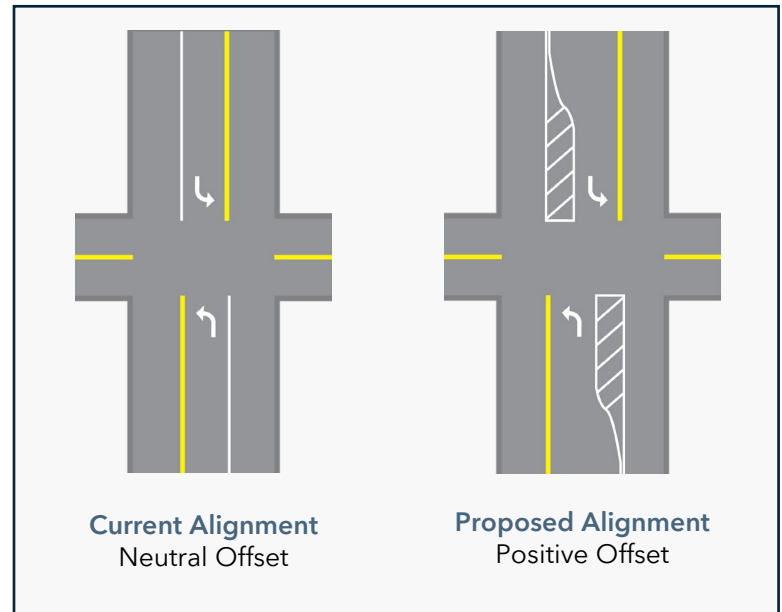
**Fall of 2025:** Real estate acquisition begins

**Feb. 2026:** Public involvement meeting #2

**Dec. 2026:** Finalize plans

**2027:** Construction begins

*\*All work is weather dependent and subject to change*



**Figure 4:** Difference in offset left-turn lane alignment

## Traffic Impacts

- Lane closures are anticipated during construction, however, the intersection of County J and County FT is scheduled to remain open to traffic

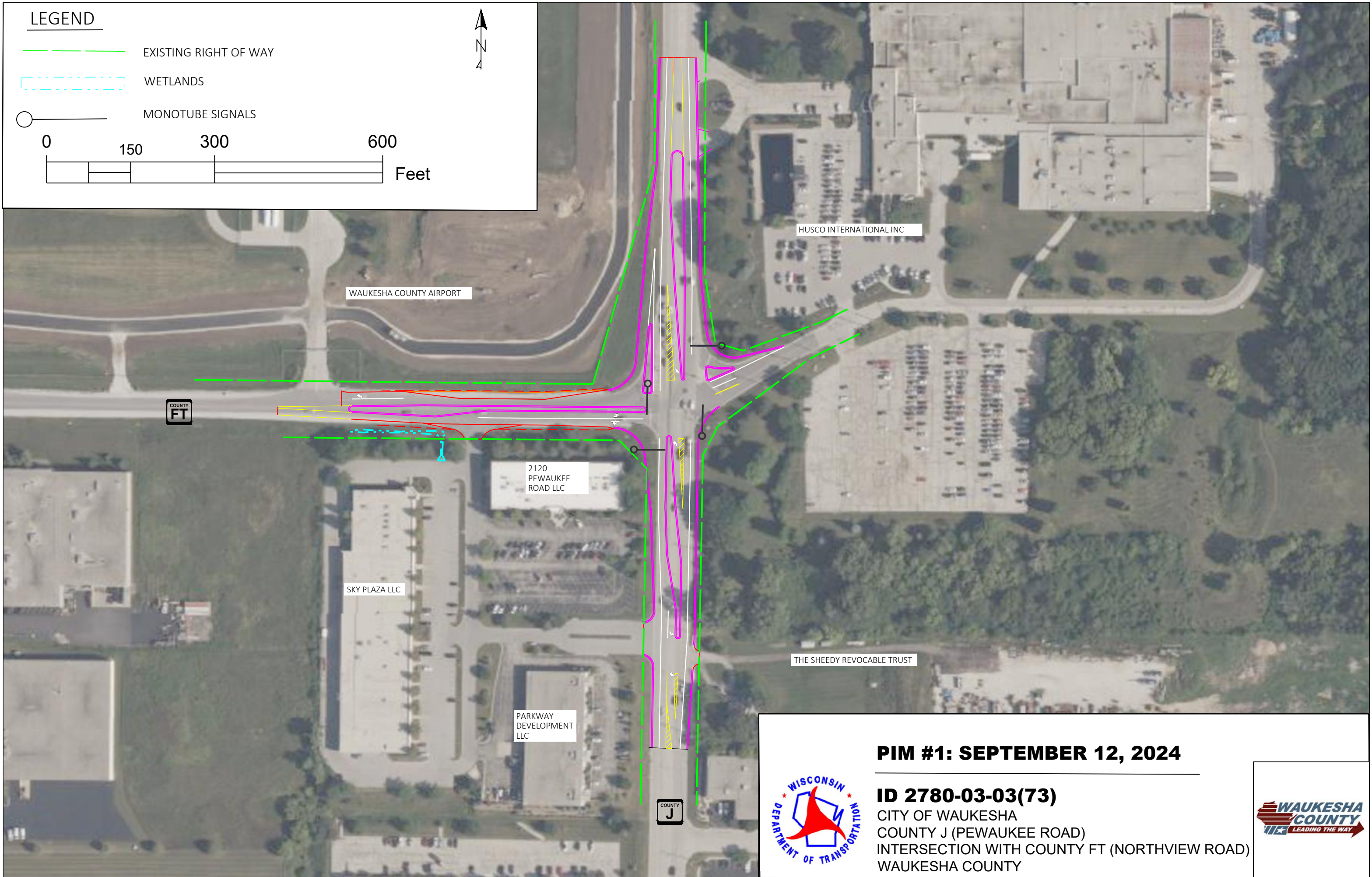
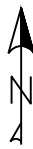
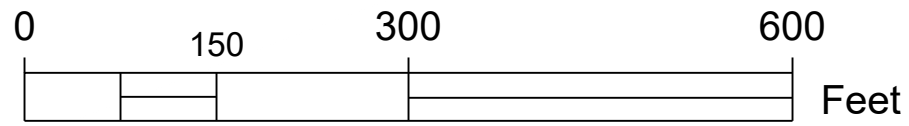
## Environmental and Real Estate Impacts

- Minor tree clearing may be required for this project
- Additional right-of-way will be necessary in the form of permanent easement and temporary limited easement; no right-of-way from the airport is anticipated
- Real estate acquisition is anticipated to begin in 2025
- Access to local businesses and residences will be maintained throughout the project

*The project team thanks you for your participation and cooperation throughout this project!*

**LEGEND**

- EXISTING RIGHT OF WAY
- WETLANDS
- MONOTUBE SIGNALS



**PIM #1: SEPTEMBER 12, 2024**

**ID 2780-03-03(73)**

CITY OF WAUKESHA  
COUNTY J (PEWAUKEE ROAD)  
INTERSECTION WITH COUNTY FT (NORTHVIEW ROAD)  
WAUKESHA COUNTY

