

ENROLLED ORDINANCE 169-11

LAYING OUT, RELOCATION AND IMPROVEMENT OF COUNTY TRUNK HIGHWAY
CW, WAUKESHA COUNTY PROJECT, PROJECT I.D. 2949-00-00/CAPITAL PROJECT
#200810, WAUKESHA COUNTY LIMITS TO 1,661 FEET EAST OF AMBER LANE,
TOWN OF OCONOMOWOC, WAUKESHA COUNTY

WHEREAS, the County Board of Supervisors of Waukesha County finds that the proper improvement in maintenance of County Trunk Highway CW in the Town of Oconomowoc from a point that is 684.16 feet South of and 31.20 feet West of the Northwest Corner of Section 7, Town 8 North, Range 17 East, in the Town of Oconomowoc, Waukesha County, State of Wisconsin to a point that is 468.62 feet South of and 509.11 feet West of the North Corner of Section 7, Town 8 North, Range 17 East, Town of Oconomowoc, Waukesha County, State of Wisconsin, requires certain relocation or changes and the acquisition of certain rights of way as shown on the plat marked "Plat of Right of Way Required for CTH CW, Project I.D. 2949-00-00, CTH CW, Waukesha County Limits to 1,661 feet East of Amber Lane, Waukesha County".

THE COUNTY BOARD OF SUPERVISORS OF THE COUNTY OF WAUKESHA DOES ORDAIN that County Trunk Highway CW is hereby changed or relocated from a point that is 684.16 feet South of and 31.20 feet West of the Northwest Corner of Section 7, Town 8 North, Range 17 East, in the Town of Oconomowoc, Waukesha County, State of Wisconsin to a point that is 468.62 feet South of and 509.11 feet West of the North Corner of Section 7, Town 8 North, Range 17 East, Town of Oconomowoc, Waukesha County, State of Wisconsin requires certain relocation or changes and the acquisition of certain rights of way as shown on the plat marked "Plat of Right of Way Required for for CTH CW, Project I.D. 2949-00-00, CTH CW, Waukesha County Limits to 1,661 feet East of Amber Lane, Waukesha County", said plat on file in the County Clerk's office and adopted by reference under the authority granted by Section 83.08 and Chapter 32 of the Wisconsin Statutes.

FISCAL NOTE

LAYING OUT, RELOCATION AND IMPROVEMENT OF
COUNTY TRUNK HIGHWAY CW
WAUKESHA COUNTY PROJECT
PROJECT I.D. 2949-00-00/CAPITAL PROJECT #200810
WAUKESHA COUNTY LIMITS TO 1,661 FEET EAST OF AMBER LANE

TOWN OF OCONOMOWOC
WAUKESHA COUNTY

This ordinance identifies right of way acquisitions of about 1.52 acres for relocation and improvement of County Trunk Highway CW as part of a bridge improvement capital project (#200810). According to Public Works – Transportation Engineering management, these costs are estimated at \$72,000, which is within this capital project's land acquisition budget of \$75,000. No additional funds are being appropriated by this ordinance.




Linda G. Witkowski
Budget Manager

WD
5/7/2014

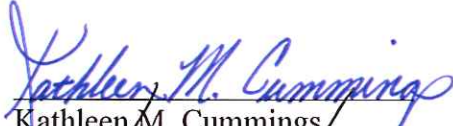
LAYING OUT, RELOCATION AND IMPROVEMENT OF COUNTY TRUNK HIGHWAY
CW, WAUKESHA COUNTY PROJECT, PROJECT I.D. 2949-00-00/CAPITAL PROJECT
#200810, WAUKESHA COUNTY LIMITS TO 1,661 FEET EAST OF AMBER LANE,
TOWN OF OCONOMOWOC, WAUKESHA COUNTY

Presented by:
Public Works Committee

Approved by:
Finance Committee

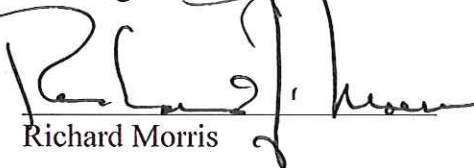

David W. Swan, Chair

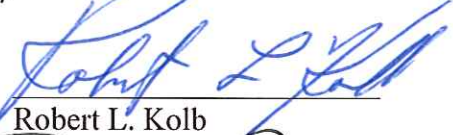

James A. Heinrich, Chair


Kathleen M. Cummings

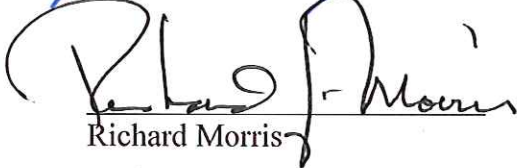

Eric Highum


Keith Hammitt

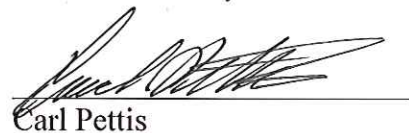

Richard Morris

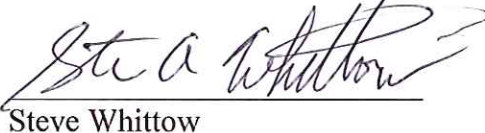

Robert L. Kolb


Larry Nelson


Richard Morris


Duane E. Paulson


Carl Pettis


Steve Whittow


Steve Whittow



William J. Zaborowski

The foregoing legislation adopted by the County Board of Supervisors of Waukesha County, Wisconsin, was presented to the County Executive on:

Date: 5/27/2014, 
Kathleen Novack, County Clerk

The foregoing legislation adopted by the County Board of Supervisors of Waukesha County, Wisconsin, is hereby:

Approved: x
Vetoed: _____

Date: 6-2-14, 
Daniel P. Vrakas, County Executive

SCHEDULE OF LANDS & INTERESTS REQUIRED

AREAS SHOWN IN THE TOTAL AREA MAY BE APPROXIMATE AND ARE DERIVED FROM TAX ROLLS OR OTHER AVAILABLE SOURCES AND MAY NOT INCLUDE LANDS OF THE OWNER WHICH ARE NOT CONTIGUOUS TO THE AREA TO BE ACQUIRED.

PARCEL NO.	SHEET NO.	OWNERS	INTEREST REQ'D.	TOTAL AREA ACRES	EASEMENT ACRES REQUIRED			R/W ACRES REQUIRED		TOTAL ACRES REM.
					T.L.E.	P.L.E.	NEW	EXIST.	TOTAL	
1	4.4	PHILIP AND SALLY SALZMAN REVOCABLE TRUST	FEE	3.00	-	-	0.01	-	0.01	2.99
2	4.4	ANN MARIE OLSEN	FEE	1.00	-	-	0.16	-	0.16	0.84
3	4.4	DAVID HOWDEN	FEE	4.00	-	-	0.003	-	0.003	3.997
4	4.4	WAUKESHA COUNTY	FEE, T.L.E.	0.78	0.01	-	0.05	-	0.05	0.73
5A	4.5	PAUL H. WALTER	FEE	0.63	-	-	0.07	0.07	0.14	0.49
5B	4.4, 4.5	PAUL H. WALTER	FEE, T.L.E.	15.64	0.07	-	0.83	0.49	1.32	14.32
5C	4.4, 4.5	PAUL H. WALTER	FEE, T.L.E.	148.82	0.05	-	0.21	1.21	1.42	147.10
6	4.5	METHODIST EPISCOPAL CHURCH	FEE	1.00	-	-	0.15	0.13	0.28	0.72
7	4.5	ANDREW AND RACHEL RICH	FEE, T.L.E.	3.77	0.12	-	0.25	0.28	0.54	3.23
100	4.4, 4.5	WE-ENERGIES - ELECTRIC	CONVEYANCE OF RIGHTS							
101	4.4	A7&T	CONVEYANCE OF RIGHTS							

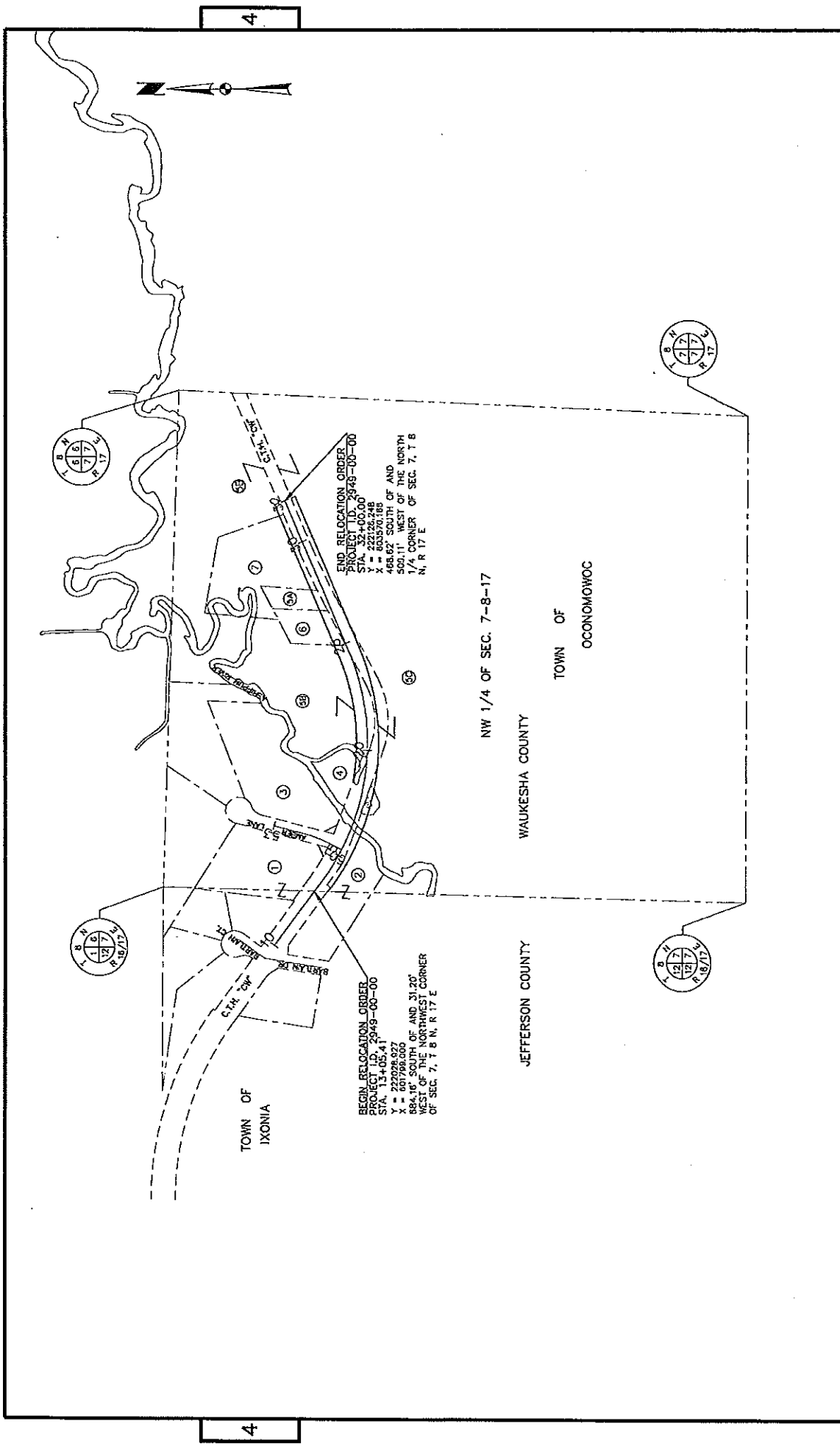
REVISION DATE: _____ DATE: 04/28/2014

SCALE: 1"=40' N/A N/A

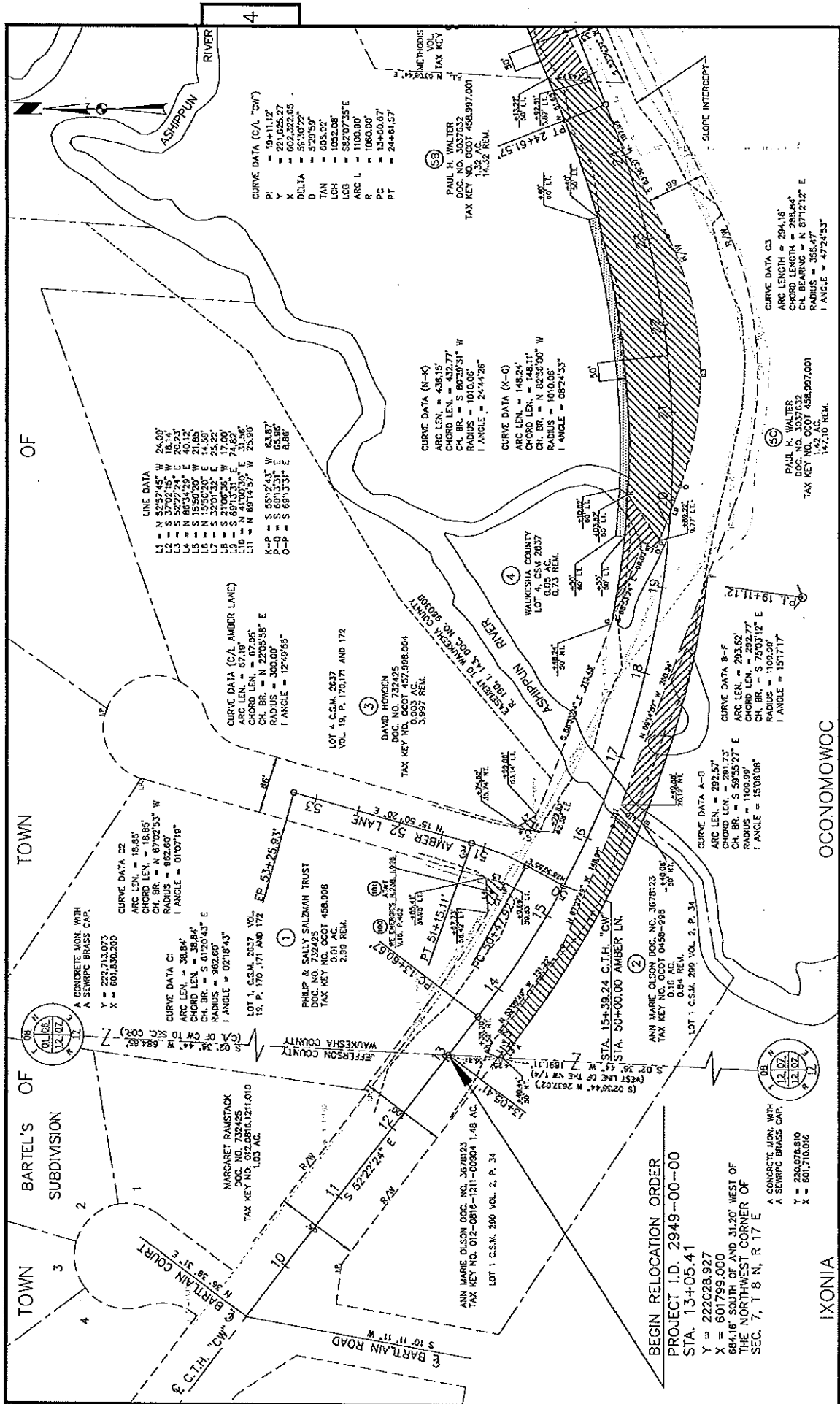
HWY: C.T.H. "CW" COUNTY: WAUKESHA

CONSTRUCTION PROJECT NO.: 3947-05-71/2949-00-70 R/W PROJECT NO.: 2949-00-00

PLAT SHEET NO: 4.2 E



REVISION DATE:	DATE: 04/28/2014	HPY: C.T.H. "CW"	CONSTRUCTION PROJECT NO.: 3947-05-71/2949-00-70	PLAT SHEET NO: 4.3
	PLAT OVERVIEW	COUNTY: WAUKESHA	R/W PROJECT NO.: 2949-00-00	E
FILE NAME : N:\DWP\ENGINEER\PROJECTS\VIEW AT ASHIPPLIN RIVER BRIDGE\ACAD\DWG\PLAT\VIEWOVERVIEW.DWG PLOT DATE : 04/28/2014 PLOT BY : MATHE, JASON File Number: 169-O-010 Referred to: PW - FI 4				



CURVE DATA (C/A 'CW')
 PI = 19+11.12
 Y = 221.625.27
 X = 601.336.203
 DELTA = 52°05'27"
 O = 52°05'27"
 TAN = 684.90'
 LCH = 1094.08'
 LCB = 58297.35'E
 ARC L = 1100.00'
 R = 13+400.07
 PC = 24+481.57
 PT = 24+481.57

CURVE DATA (N-K)
 ARC LEN. = 436.15'
 CH. BR. = S 80°29'31" W
 RADIUS = 1010.00'
 I ANGLE = 24°44'26"

CURVE DATA (M-O)
 ARC LEN. = 148.24'
 CH. BR. = S 82°50'00" W
 RADIUS = 1010.00'
 I ANGLE = 08°24'33"

CURVE DATA (A-B)
 ARC LEN. = 292.57'
 CH. BR. = S 59°35'27" E
 RADIUS = 1100.00'
 I ANGLE = 15°00'08"

CURVE DATA (B-F)
 ARC LEN. = 293.62'
 CH. BR. = S 292.77'
 RADIUS = 1100.00'
 I ANGLE = 15°17'17"

CURVE DATA (C3)
 ARC LENGTH = 294.16'
 CHORD LENGTH = 258.94'
 RADIUS = 355.47'
 I ANGLE = 47°24'33"

LINE DATA
 L1 = S 50°57'45" W 24.00'
 L2 = S 37°02'15" W 18.14'
 L3 = S 52°22'24" E 25.23'
 L4 = N 85°34'29" E 20.12'
 L5 = S 50°57'45" W 14.50'
 L6 = N 15°50'20" E 14.50'
 L7 = S 32°01'32" E 25.22'
 L8 = S 21°06'36" W 17.00'
 L9 = S 69°13'31" E 74.85'
 L10 = N 69°13'31" W 23.90'
 R-P = S 59°35'27" W 63.87'
 O-P = S 69°13'31" E 8.08'

CURVE DATA (C/A AMBER LANE)
 ARC LEN. = 17.15'
 CH. BR. = N 22°55'58" E
 RADIUS = 300.00'
 I ANGLE = 12°49'55"

CURVE DATA C2
 ARC LEN. = 18.95'
 CH. BR. = N 67°02'53" W
 RADIUS = 962.60'
 I ANGLE = 01°07'19"

CURVE DATA C1
 ARC LEN. = 38.84'
 CH. BR. = S 61°20'43" E
 RADIUS = 962.60'
 I ANGLE = 02°18'43"

CURVE DATA A-8
 ARC LEN. = 292.57'
 CH. BR. = S 59°35'27" E
 RADIUS = 1100.00'
 I ANGLE = 15°00'08"

CURVE DATA B-F
 ARC LEN. = 293.62'
 CH. BR. = S 292.77'
 RADIUS = 1100.00'
 I ANGLE = 15°17'17"

LOT 1 C.S.M. 2637 VOL. 19, P. 170, 171 AND 172
 PHILIP & SALLY SALZMAN TRUST
 DOC. NO. 739425
 TAX KEY NO. 003 AC
 2.99 REM.

LOT 4 C.S.M. 2637 VOL. 19, P. 170, 171 AND 172
 DAVID HINDEN
 DOC. NO. 73215
 TAX KEY NO. 003 AC
 3.997 REM.

LOT 15+39.24 C.I.H. 'CW'
 ANN MARIE OLSON
 DOC. NO. 3678123
 TAX KEY NO. 003 AC
 0.84 REM.

LOT 1 C.S.M. 299 VOL. 2, P. 34
 MARGARET RAMSTACK
 DOC. NO. 732425
 TAX KEY NO. 012-0816-1211-00804
 1.48 AC

LOT 1 C.S.M. 299 VOL. 2, P. 34
 ANN MARIE OLSON
 DOC. NO. 3678123
 TAX KEY NO. 003 AC
 0.84 REM.

LOT 1 C.S.M. 299 VOL. 2, P. 34
 ANN MARIE OLSON
 DOC. NO. 3678123
 TAX KEY NO. 003 AC
 0.84 REM.

BEGIN RELOCATION ORDER
 PROJECT I.D. 2949-00-00
 STA. 13+05.41
 Y = 222028.927
 X = 601799.000
 684.16' SOUTH OF AND 31.20' WEST OF
 THE NORTHWEST CORNER OF
 SEC. 7, T 8 N, R 17 E

CONCRETE MON. WITH A SENRPG BRASS CAP.
 Y = 222.713.073
 X = 601.336.200

CONCRETE MON. WITH A SENRPG BRASS CAP.
 Y = 220.074.810
 X = 601.710.016

CONCRETE MON. WITH A SENRPG BRASS CAP.
 Y = 220.074.810
 X = 601.710.016

CONCRETE MON. WITH A SENRPG BRASS CAP.
 Y = 220.074.810
 X = 601.710.016

CONCRETE MON. WITH A SENRPG BRASS CAP.
 Y = 220.074.810
 X = 601.710.016

CONCRETE MON. WITH A SENRPG BRASS CAP.
 Y = 220.074.810
 X = 601.710.016

CONCRETE MON. WITH A SENRPG BRASS CAP.
 Y = 220.074.810
 X = 601.710.016

CONCRETE MON. WITH A SENRPG BRASS CAP.
 Y = 220.074.810
 X = 601.710.016

CONCRETE MON. WITH A SENRPG BRASS CAP.
 Y = 220.074.810
 X = 601.710.016

CONCRETE MON. WITH A SENRPG BRASS CAP.
 Y = 220.074.810
 X = 601.710.016

CONCRETE MON. WITH A SENRPG BRASS CAP.
 Y = 220.074.810
 X = 601.710.016

CONCRETE MON. WITH A SENRPG BRASS CAP.
 Y = 220.074.810
 X = 601.710.016

CONCRETE MON. WITH A SENRPG BRASS CAP.
 Y = 220.074.810
 X = 601.710.016

CONCRETE MON. WITH A SENRPG BRASS CAP.
 Y = 220.074.810
 X = 601.710.016

CONCRETE MON. WITH A SENRPG BRASS CAP.
 Y = 220.074.810
 X = 601.710.016

CONCRETE MON. WITH A SENRPG BRASS CAP.
 Y = 220.074.810
 X = 601.710.016

CONCRETE MON. WITH A SENRPG BRASS CAP.
 Y = 220.074.810
 X = 601.710.016

CONCRETE MON. WITH A SENRPG BRASS CAP.
 Y = 220.074.810
 X = 601.710.016

CONCRETE MON. WITH A SENRPG BRASS CAP.
 Y = 220.074.810
 X = 601.710.016

CONCRETE MON. WITH A SENRPG BRASS CAP.
 Y = 220.074.810
 X = 601.710.016

CONCRETE MON. WITH A SENRPG BRASS CAP.
 Y = 220.074.810
 X = 601.710.016

CONCRETE MON. WITH A SENRPG BRASS CAP.
 Y = 220.074.810
 X = 601.710.016

CONCRETE MON. WITH A SENRPG BRASS CAP.
 Y = 220.074.810
 X = 601.710.016

CONCRETE MON. WITH A SENRPG BRASS CAP.
 Y = 220.074.810
 X = 601.710.016

CONCRETE MON. WITH A SENRPG BRASS CAP.
 Y = 220.074.810
 X = 601.710.016

CONCRETE MON. WITH A SENRPG BRASS CAP.
 Y = 220.074.810
 X = 601.710.016

CONCRETE MON. WITH A SENRPG BRASS CAP.
 Y = 220.074.810
 X = 601.710.016

CONCRETE MON. WITH A SENRPG BRASS CAP.
 Y = 220.074.810
 X = 601.710.016

CONCRETE MON. WITH A SENRPG BRASS CAP.
 Y = 220.074.810
 X = 601.710.016

CONCRETE MON. WITH A SENRPG BRASS CAP.
 Y = 220.074.810
 X = 601.710.016

CONCRETE MON. WITH A SENRPG BRASS CAP.
 Y = 220.074.810
 X = 601.710.016

CONCRETE MON. WITH A SENRPG BRASS CAP.
 Y = 220.074.810
 X = 601.710.016

CONCRETE MON. WITH A SENRPG BRASS CAP.
 Y = 220.074.810
 X = 601.710.016

CONCRETE MON. WITH A SENRPG BRASS CAP.
 Y = 220.074.810
 X = 601.710.016

CONCRETE MON. WITH A SENRPG BRASS CAP.
 Y = 220.074.810
 X = 601.710.016

CONCRETE MON. WITH A SENRPG BRASS CAP.
 Y = 220.074.810
 X = 601.710.016

CONCRETE MON. WITH A SENRPG BRASS CAP.
 Y = 220.074.810
 X = 601.710.016

CONCRETE MON. WITH A SENRPG BRASS CAP.
 Y = 220.074.810
 X = 601.710.016

CONCRETE MON. WITH A SENRPG BRASS CAP.
 Y = 220.074.810
 X = 601.710.016

CONCRETE MON. WITH A SENRPG BRASS CAP.
 Y = 220.074.810
 X = 601.710.016

CONCRETE MON. WITH A SENRPG BRASS CAP.
 Y = 220.074.810
 X = 601.710.016

CONCRETE MON. WITH A SENRPG BRASS CAP.
 Y = 220.074.810
 X = 601.710.016

CONCRETE MON. WITH A SENRPG BRASS CAP.
 Y = 220.074.810
 X = 601.710.016

CONCRETE MON. WITH A SENRPG BRASS CAP.
 Y = 220.074.810
 X = 601.710.016

CONCRETE MON. WITH A SENRPG BRASS CAP.
 Y = 220.074.810
 X = 601.710.016

CONCRETE MON. WITH A SENRPG BRASS CAP.
 Y = 220.074.810
 X = 601.710.016

CONCRETE MON. WITH A SENRPG BRASS CAP.
 Y = 220.074.810
 X = 601.710.016

CONCRETE MON. WITH A SENRPG BRASS CAP.
 Y = 220.074.810
 X = 601.710.016

CONCRETE MON. WITH A SENRPG BRASS CAP.
 Y = 220.074.810
 X = 601.710.016

CONCRETE MON. WITH A SENRPG BRASS CAP.
 Y = 220.074.810
 X = 601.710.016

CONCRETE MON. WITH A SENRPG BRASS CAP.
 Y = 220.074.810
 X = 601.710.016

CONCRETE MON. WITH A SENRPG BRASS CAP.
 Y = 220.074.810
 X = 601.710.016

CONCRETE MON. WITH A SENRPG BRASS CAP.
 Y = 220.074.810
 X = 601.710.016

CONCRETE MON. WITH A SENRPG BRASS CAP.
 Y = 220.074.810
 X = 601.710.016

CONCRETE MON. WITH A SENRPG BRASS CAP.
 Y = 220.074.810
 X = 601.710.016

CONCRETE MON. WITH A SENRPG BRASS CAP.
 Y = 220.074.810
 X = 601.710.016

CONCRETE MON. WITH A SENRPG BRASS CAP.
 Y = 220.074.810
 X = 601.710.016

CONCRETE MON. WITH A SENRPG BRASS CAP.
 Y = 220.074.810
 X = 601.710.016

CONCRETE MON. WITH A SENRPG BRASS CAP.
 Y = 220.074.810
 X = 601.710.016

CONCRETE MON. WITH A SENRPG BRASS CAP.
 Y = 220.074.810
 X = 601.710.016

CONCRETE MON. WITH A SENRPG BRASS CAP.
 Y = 220.074.810
 X = 601.710.016

CONCRETE MON. WITH A SENRPG BRASS CAP.
 Y = 220.074.810
 X = 601.710.016

CONCRETE MON. WITH A SENRPG BRASS CAP.
 Y = 220.074.810
 X = 601.710.016

CONCRETE MON. WITH A SENRPG BRASS CAP.
 Y = 220.074.810
 X = 601.710.016

CONCRETE MON. WITH A SENRPG BRASS CAP.
 Y = 220.074.810
 X = 601.710.016

CONCRETE MON. WITH A SENRPG BRASS CAP.
 Y = 220.074.810
 X = 601.710.016

CONCRETE MON. WITH A SENRPG BRASS CAP.
 Y = 220.074.810
 X = 601.710.016

CONCRETE MON. WITH A SENRPG BRASS CAP.
 Y = 220.074.810
 X = 601.710.016

CONCRETE MON. WITH A SENRPG BRASS CAP.
 Y = 220.074.810
 X = 601.710.016

CONCRETE MON. WITH A SENRPG BRASS CAP.
 Y = 220.074.810
 X = 601.710.016

CONCRETE MON. WITH A SENRPG BRASS CAP.
 Y = 220.074.810
 X = 601.710.016

CONCRETE MON. WITH A SENRPG BRASS CAP.
 Y = 220.074.810
 X = 601.710.016

CONCRETE MON. WITH A SENRPG BRASS CAP.
 Y = 220.074.810
 X = 601.710.016

CONCRETE MON. WITH A SENRPG BRASS CAP.
 Y = 220.074.810
 X = 601.710.016

CONCRETE MON. WITH A SENRPG BRASS CAP.
 Y = 220.074.810
 X = 601.710.016

CONCRETE MON. WITH A SENRPG BRASS CAP.
 Y = 220.074.810
 X = 601.710.016

CONCRETE MON. WITH A SENRPG BRASS CAP.
 Y = 220.074.810
 X = 601.710.016

CONCRETE MON. WITH A SENRPG BRASS CAP.
 Y = 220.074.810
 X = 601.710.016

CONCRETE MON. WITH A SENRPG BRASS CAP.
 Y = 220.074.810
 X = 601.710.016

CONCRETE MON. WITH A SENRPG BRASS CAP.
 Y = 220.074.810
 X = 601.710.016

CONCRETE MON. WITH A SENRPG BRASS CAP.
 Y = 220.074.810
 X = 601.710.016

CONCRETE MON. WITH A SENRPG BRASS CAP.
 Y = 220.074.810
 X = 601.710.016

CONCRETE MON. WITH A SENRPG BRASS CAP.
 Y = 220.074.810
 X = 601.710.016

CONCRETE MON. WITH A SENRPG BRASS CAP.
 Y = 220.074.810
 X = 601.710.016

CONCRETE MON. WITH A SENRPG BRASS CAP.
 Y = 220.074.810
 X = 601.710.016

CONCRETE MON. WITH A SENRPG BRASS CAP.
 Y = 220.074.810
 X = 601.710.016

CONCRETE MON. WITH A SENRPG BRASS CAP.
 Y = 220.074.810
 X = 601.710.016

CONCRETE MON. WITH A SENRPG BRASS CAP.
 Y = 220.074.810
 X = 601.710.016

CONCRETE MON. WITH A SENRPG BRASS CAP.
 Y = 220.074.810
 X = 601.710.016

CONCRETE MON. WITH A SENRPG BRASS CAP.
 Y = 220.074.810
 X = 601.710.016

CONCRETE MON. WITH A SENRPG BRASS CAP.
 Y = 220.074.810
 X = 601.710.016

CONCRETE MON. WITH A SENRPG BRASS CAP.
 Y = 220.074.810
 X = 601.710.016

CONCRETE MON. WITH A SENRPG BRASS CAP.
 Y = 220.074.810
 X = 601.710.016

CONCRETE MON. WITH A SENRPG BRASS CAP.
 Y = 220.074.810
 X = 601.710.016

CONCRETE MON. WITH A SENRPG BRASS CAP.
 Y = 220.074.810
 X = 601.710.016

CONCRETE MON. WITH A SENRPG BRASS CAP.
 Y = 220.074.810
 X = 601.710.016

CONCRETE MON. WITH A SENRPG BRASS CAP.
 Y = 220.074.810
 X = 601.710.016

CONCRETE MON. WITH A SENRPG BRASS CAP.
 Y = 220.074.810
 X = 601.710.016

CONCRETE MON. WITH A SENRPG BRASS CAP.
 Y = 220.074.810
 X = 601.710.016

CONCRETE MON. WITH A SENRPG BRASS CAP.
 Y = 220.074.810
 X = 601.710.016

CONCRETE MON. WITH A SENRPG BRASS CAP.
 Y = 220.074.810
 X = 601.710.016

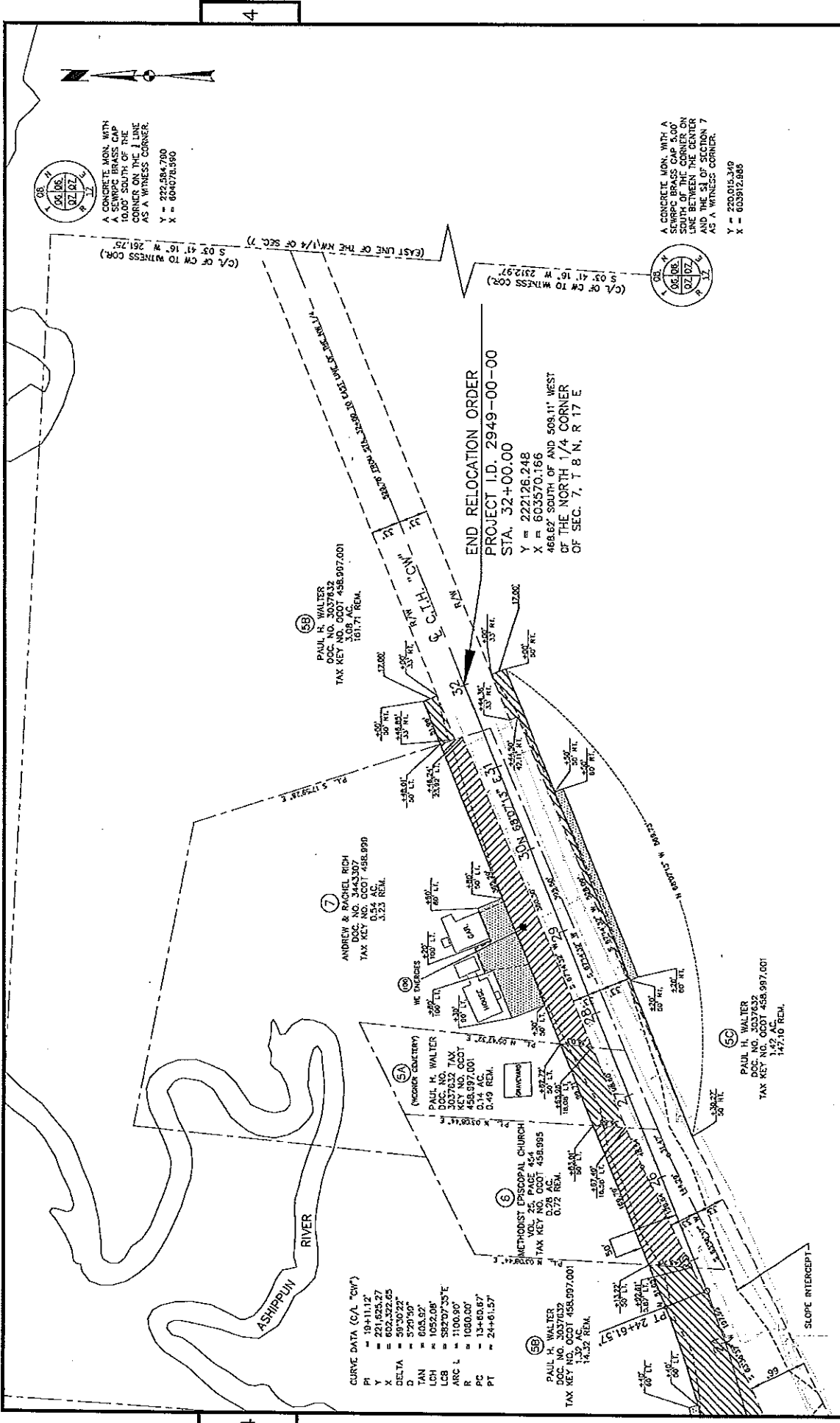
CONCRETE MON. WITH A SENRPG BRASS CAP.
 Y = 220.074.810
 X = 601.710.016

CONCRETE MON. WITH A SENRPG BRASS CAP.
 Y = 220.074.810
 X = 601.710.016

CONCRETE MON. WITH A SENRPG BRASS CAP.
 Y = 220.074.810
 X = 601.710.016

CONCRETE MON. WITH A SENRPG BRASS CAP.
 Y = 220.074.810
 X = 601.710.016

CONCRETE MON. WITH A SENRPG BRASS CAP.
 Y = 220.074.810
 X = 601.710.016



A CONCRETE MON. WITH SEWRPC BRASS CAP 5.00' SOUTH OF THE CORNER ON THE J LINE AS A WITNESS CORNER.
 Y = 222 884.700
 X = 604078.590

A CONCRETE MON. WITH A SEWRPC BRASS CAP 5.00' SOUTH OF THE CORNER ON THE CENTER LINE OF SECTION 7 AS A WITNESS CORNER.
 Y = 220 015.349
 X = 603 812.985

CURVE DATA (C/A "CW")
 P1 = 19+11.12'
 P2 = 21+525.27'
 X = 602,322.65
 DELTA = 59°30'22"
 TAN = 57.0750'
 D = 606.52'
 L = 1022.05'
 LCB = 70.00'
 R = 100.00'
 ARC L = 100.00'
 PC = 14+60.87'
 PT = 24+61.57'

END RELOCATION ORDER
 PROJECT I.D. 2949-00-00
 STA. 52+00.00
 Y = 222126.248
 X = 603570.166
 468.62' SOUTH OF AND 508.11' WEST OF THE NORTH 1/4 CORNER OF SEC. 7, T 8 N, R 17 E

39 PAUL H. WALTER
 DOC. NO. 3037432
 TAX KEY NO. 458.997.001
 161.71 REM.

7 ANDREW & RACHEL RICH
 DOC. NO. 3443307
 TAX KEY NO. 458.999
 3.33 REM.

5A PAUL H. WALTER
 (WORKER COLLECTOR)
 DOC. NO. 3037632
 TAX KEY NO. 458.997.001
 0.49 REM.

6 METHODIST EPISCOPAL CHURCH
 VOL. 25, PAGE 45-4
 DOC. NO. 458.995
 TAX KEY NO. 458.997.001
 0.72 REM.

5B PAUL H. WALTER
 DOC. NO. 3037632
 TAX KEY NO. 458.997.001
 14.32 REM.

5C PAUL H. WALTER
 DOC. NO. 3037632
 TAX KEY NO. 458.997.001
 147.10 REM.

REVISION DATE	DATE: 04/28/2014	SCALE: FEET 0 50 100	HWY: C.T.H. "CW"	CONSTRUCTION PROJECT NO.: 3947-05-71/2949-00-70	PLAT SHEET NO.: 4.5
			COUNTY: WAUKESHA	R/W PROJECT NO.: 2949-00-00	E

FILE NAME: T:\PROJECTS\ENGINEER\PROJECTS\VIEW AT ASHIPPUIN RIVER BRIDGE\ASHP-CW-COUNTY COORD.DWG
 PLOT BY: T. MAYER, JASON
 File Number: 169-O-010
 Referred on: 05/08/14
 Referred to: PW - FI
 6

WAUKESHA COUNTY BOARD OF SUPERVISORS

V

DATE-05/27/14 (ORD) NUMBER-1690010

- 1 R. KOLB.....AYE
- 2 D. Zimmermann.....AYE
- 3 R. MORRIS.....AYE
- 4 J. BATZKO.....AYE
- 5 J. BRANDTJEN.....AYE
- 6 J. WALZ.....AYE
- 7 J. GRANT.....AYE
- 8 E. HIGHUM.....AYE
- 9 J. HEINRICH.....AYE
- 10 D. SWAN.....AYE
- 11 C. HOWARD.....AYE
- 12 P. WOLFF.....AYE
- 13 P. DECKER.....AYE
- 14 C. PETTIS.....AYE
- 15 W. KOLB.....AYE
- 16 M. CROWLEY.....AYE
- 17 D. PAULSON.....AYE
- 18 L. NELSON.....AYE
- 19 K. CUMMINGS.....AYE
- 20 T. SCHELLINGER....AYE
- 21 W. ZABOROWSKI.....AYE
- 22 P. JASKE.....AYE
- 23 K. HAMMITT.....AYE
- 24 S. WHITTOW.....AYE
- 25 G. YERKE.....AYE

TOTAL AYES-25

TOTAL NAYS-00

CARRIED _____

DEFEATED _____

UNANIMOUS X

TOTAL VOTES-25