

ENROLLED ORDINANCE 179-33

CREATE A PARKING REGULATION FOR CTH Z IN THE VILLAGE OF DOUSMAN

WHEREAS, the Village of Summit Police Department has requested a no parking zone along CTH Z due to safety concerns for pedestrians and traffic on CTH Z at the Kettle Moraine Middle School and Dousman Elementary School during student drop-off and pick-up times; and

WHEREAS, in response to this request, Waukesha County had a traffic report prepared documenting intersection sight distance and shoulder width constraints that are not appropriate for safe parking at this location; and

WHEREAS, the parking, standing and stopping of vehicles along county trunk highways can have a detrimental effect upon highway capacity and safety; and

WHEREAS, Section 349.13 of the Wisconsin State Statutes provides that local authorities may regulate the parking, standing and stopping of vehicles along such highways.

THE COUNTY BOARD OF SUPERVISORS OF THE COUNTY OF WAUKESHA ORDAINS that the following parking regulation shall be in effect upon the placement of proper signs:

South side of CTH Z from Park Street easterly to State Trunk Highway 67 in the Village of Dousman – No Parking 7:00 AM to 9:00 AM and 1:30 PM to 4:00 PM on school days

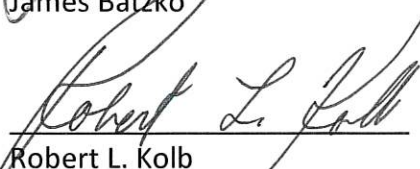
BE IT FURTHER ORDAINED that this ordinance rescinds all other previous parking regulations for the above-described portion of the County Trunk Highway System.

CREATE A PARKING REGULATION FOR CTH Z IN THE VILLAGE OF DOUSMAN

Presented by:
Public Works Committee


Keith Hammitt, Chair


James Batzko


Robert L. Kolb

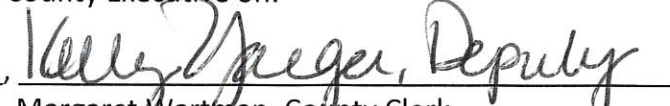

Chris Mommaerts


Thomas J. Schellinger


Steve Styza


Terry Thieme

The foregoing legislation adopted by the County Board of Supervisors of Waukesha County, Wisconsin, was presented to the County Executive on:

Date: 8/30/24, 
Margaret Wartman, County Clerk

The foregoing legislation adopted by the County Board of Supervisors of Waukesha County, Wisconsin, is hereby:

Approved: X
Vetoed: _____

Date: 9/3/24, 
Paul Farrow, County Executive

VOTE RESULTS >

25

YES

0

NO

0

ABSTAIN

0

ABSENT

Ordinance 179-O-033

Ordinance 179-O-033: Create a Parking Regulation for CTH Z in the Village of Dousman

 **Passed By Majority Vote**

D1 - Styza	AVE	D10 - Thieme	AVE	D19 - Enriquez	AVE
D2 - Euclide	AVE	D11 - Howard	AVE	D20 - Schellinger	AVE
D3 - Morris	AVE	D12 - Wolff	AVE	D21 - Gaughan	AVE
D4 - Batzko	S AVE	D13 - Leisemann	AVE	D22 - Szpara	AVE
D5 - Grant	AVE	D14 - Mommaerts	AVE	D23 - Hammitt	M AVE
D6 - Walz	AVE	D15 - Kolb	AVE	D24 - Bangs	AVE
D7 - LaFontain	AVE	D16 - Crowley	AVE	D25 - Johnson	AVE
D8 - Koremenos	AVE	D17 - Meier	AVE		
D9 - Heinrich	AVE	D18 - Nelson	AVE		

5th Meeting, 179th Year of the County Board of Supervisors - August 27 2024 07:41:59

August 27, 2024



Paul Farrow
County Executive



Allison Bussler
Director

WAUKESHA COUNTY
DEPARTMENT OF PUBLIC WORKS

MEMORANDUM

Date: July 27, 2024

To: Brett Wallace, P.E., Engineering Services Manager, Waukesha County DPW

From: Ryan Hilgendorf, Civil Engineer, Waukesha County DPW

Subject: On-Road Parking Review
CTH Z, Park Street to STH 67
Dousman, Waukesha County

The No-Parking Memo and its supporting exhibits and documentation for the above referenced project has been reviewed and approved by Waukesha County. Attached for your records is the final memo, dated July 27, 2024.

APPROVED


Ryan Hilgendorf
Civil Engineer
Waukesha County Department of Public Works

July 23rd, 2024

PART A – INTRODUCTION

Waukesha County has received a request for “no parking signs” along CTH Z from the Village of Summit Police Chief Mike Hartert. Summit PD places a Police Officer at the Kettle Moraine Middle School driveway to verbally direct traffic to prevent parking on CTH Z. Parking along the shoulder during drop-off and pick-up times creates potential safety issues, especially with pedestrians crossing CTH Z at the crosswalks and decreases sight distance for school buses entering CTH Z. *The request is for No Parking to be enforceable along the south side of CTH Z between STH 67 and Park Street during drop-off and pick-up times of 7:00-9:00 AM and 1:30-4:00 PM on school days.*

This technical memorandum summarizes field observations, a crash analysis, and sight distance analysis. A recommendation regarding on-road parking is included.

PART B – STUDY AREA

An aerial of the study area is shown in Exhibit A.

CTH Z, also known as Ottawa Avenue, is a two-lane undivided east/west road with 25 mph posted speed limit. There are 2-foot grass and or gravel shoulders on both sides of CTH Z from STH 67, the north side having a terrace and sidewalk and the south side having a drainage ditch and fire hydrants. The year 2018 annual average daily traffic (AADT) volume on CTH Z was 2,100 vehicles per day.

PART C – CRASH SUMMARY

Waukesha County searched 60 consecutive months of crash data along the study limits and found 2 crashes from Year 2019 through 2023. The crashes include a rear end collision with a vehicle stopped at STH 67 and a driver operating under the influence that crashed into inanimate roadside objects. There were no parked vehicle or pedestrian crashes within the study period.

PART D – SIGHT DISTANCE

Intersection sight distance (ISD) is desired at driveway intersections with highways to ensure motorists can see approaching traffic and safely maneuver onto the highway without greatly impacting traveling speeds for motorists on the highway. The objective is to provide an unobstructed view from the motorist’s position on the driveway (approximately 14.5-feet from the edge of the highway to all points from the driveway to the calculated ISD. Passenger vehicles were the assumed design vehicles from the residential driveways.

The design speed of a highway is generally considered the posted speed limit plus 5 mph. For CTH Z, which has a speed limit of 25 mph, the design speed is 30 mph. The ISD at 30 mph is

290-feet over the driveway motorist's left shoulder and 335-feet over their right shoulder. Due to the driveway spacing, any parking on the south side of CTH Z will result in an obstructed view.

PART E – OTHER CONSIDERATIONS

CTH Z was assumed to meet the definition of a “residential district” per Wisconsin State Statute 340.01 (50). This is because 300-feet or more of frontage the north side of CTH Z is comprised of residential dwellings. Therefore, parking restrictions under Wis. Stat. 346.51, which apply to areas outside of residential and business districts, were assumed to not apply to the study area.

Wisconsin State Statute 346.53 indicates that it is illegal to park within 15 feet of the near limits of a crosswalk or within 4 feet of the entrance to a driveway.

Wisconsin State Statute 346.54 indicates that a legally parked vehicle permits traffic in both directions to move simultaneously.

Waukesha County conducted a field visit on July 2nd, 2024. Waukesha County did not observe any parked vehicles within the study area. Waukesha County identified fire hydrants along the south side of CTH Z as well as slopes unsuitable for parking on due to the presence of drainage ditches along the south side of CTH Z as well. Passing is permitted in both directions between Park Street and Wolf Street and passing is prohibited between east of Wolf Street and STH 67, which is the location of both crosswalks.

PART F – PARKING RECOMMENDATION, SUMMARY & CONCLUSION

See Exhibit B for a summary of the recommended on-road parking prohibitions.

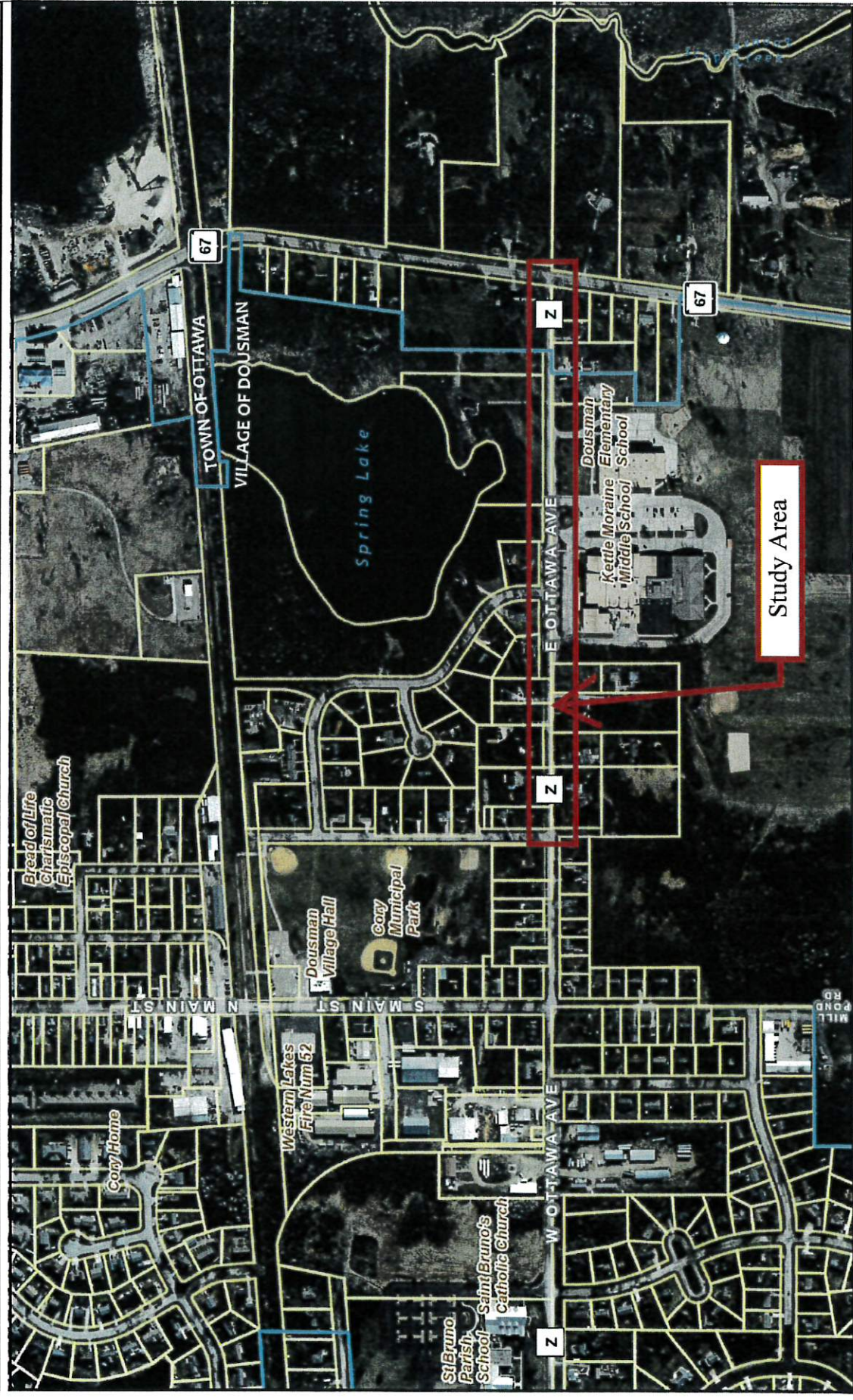
- It is recommended to prohibit parking along the south side of County Trunk Highway Z from State Trunk Highway 67 to Park Street on school days between the times of 7:00 AM to 9:00 AM and between the times of 1:30 PM to 4:00 PM.



LAND INFORMATION SYSTEMS DIVISION

Exhibit A

CTH Z - Parking Study Area Dousman, Wisconsin



0 550.00 Feet

The information and depictions herein are for informational purposes and Waukesha County specifically disclaims accuracy in this reproduction and specifically admonishes and advises that if specific and precise accuracy is required, the same should be determined by procurement of certified maps, surveys, plats, Flood Insurance Studies, or other official means. Waukesha County will not be responsible for any damages which result from third party use of the information and depictions herein, or for use which ignores this warning.

Notes:

Printed: 7/12/2024

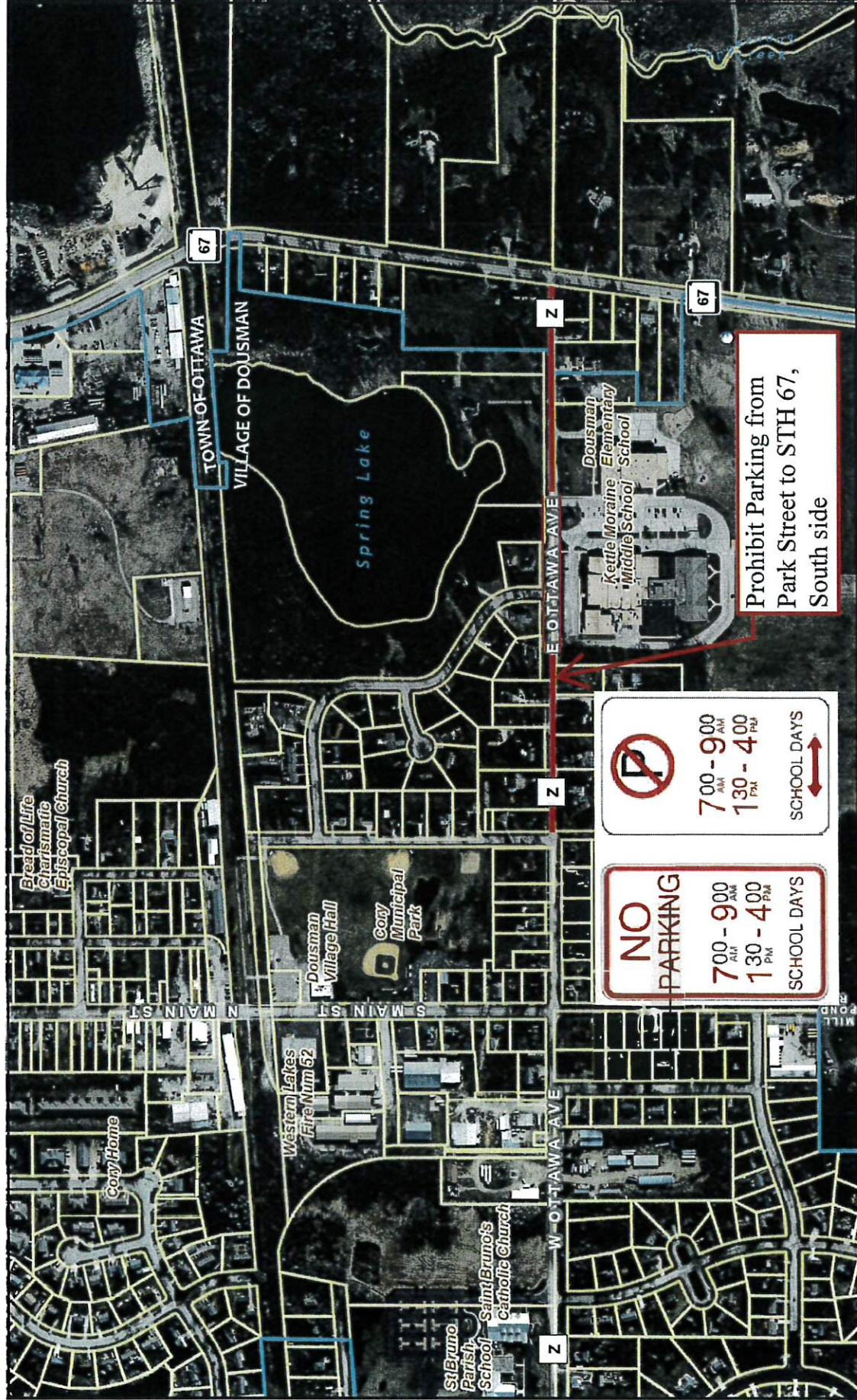


LAND INFORMATION SYSTEMS DIVISION

Exhibit B

Recommended Parking Prohibitions

Dousman, Wisconsin



0 550.00 Feet

The information and depictions herein are for informational purposes and Waukesha County specifically disclaims accuracy in this reproduction and specifically admonishes and advises that if specific and precise accuracy is required, the same should be determined by procurement of certified maps, surveys, plats, Flood Insurance Studies, or other official means. Waukesha County will not be responsible for any damages which result from third party use of the information and depictions herein, or for use which ignores this warning.

Notes:

Printed: 7/12/2024