

Waukesha County 2024
Stormwater Workshop

Stormwater Myths and Sometime Truths

April 3, 2024

Jim Bachhuber

Topics:

1. First Flush for Pollution – Always?
2. Moving Watershed Boundaries
3. What's in my Hopper? Is it Street Dirt or Pollution?

1. First Flush for Pollution ... Always?

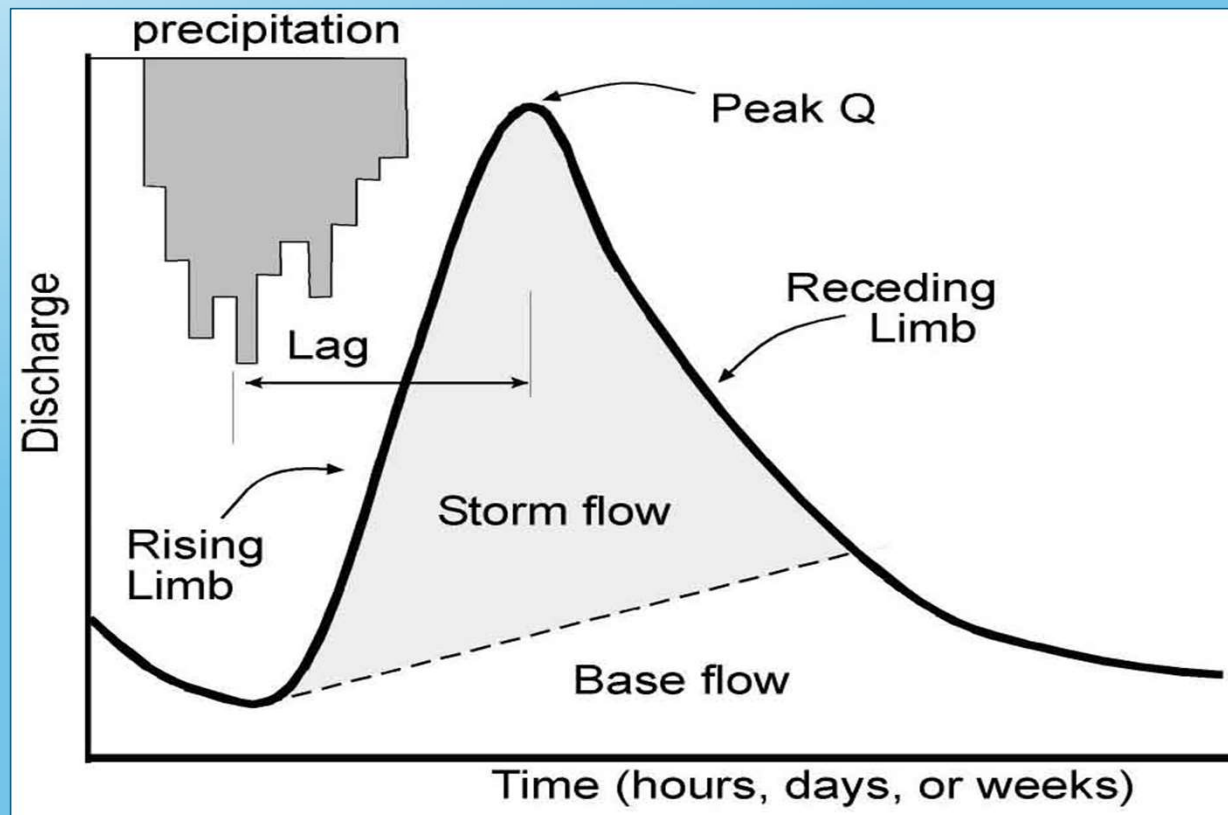
What is “First Flush”?

--- the concept that the highest concentrations of pollutants are always found in the initial stages of a runoff event.



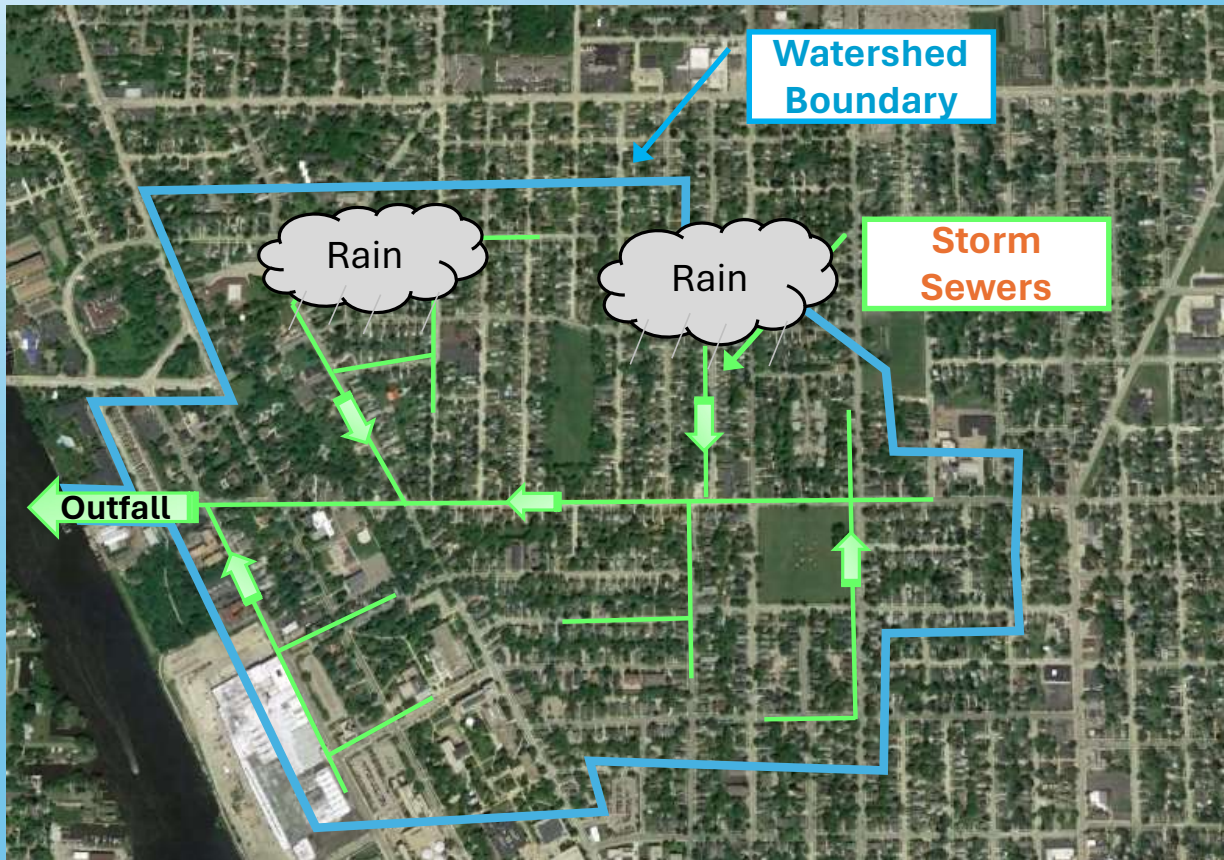
1. First Flush for Pollution ... Always?

Textbook hydrograph:

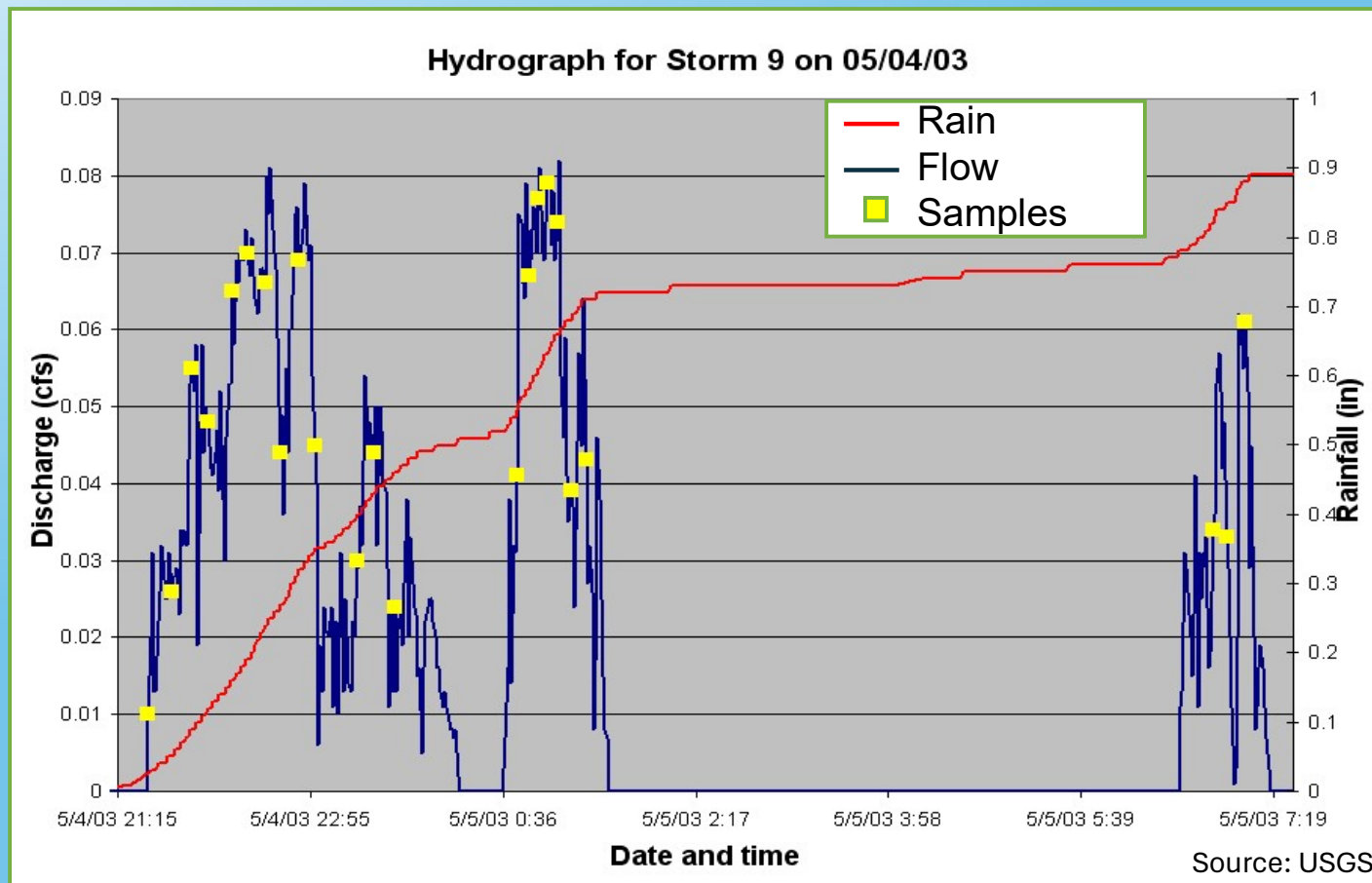


... may or may NOT occur in urban watersheds

First Flush for Pollution ... Timing of Flow



First Flush for Pollution ...Timing of Flow



Measured Urban Hydrograph

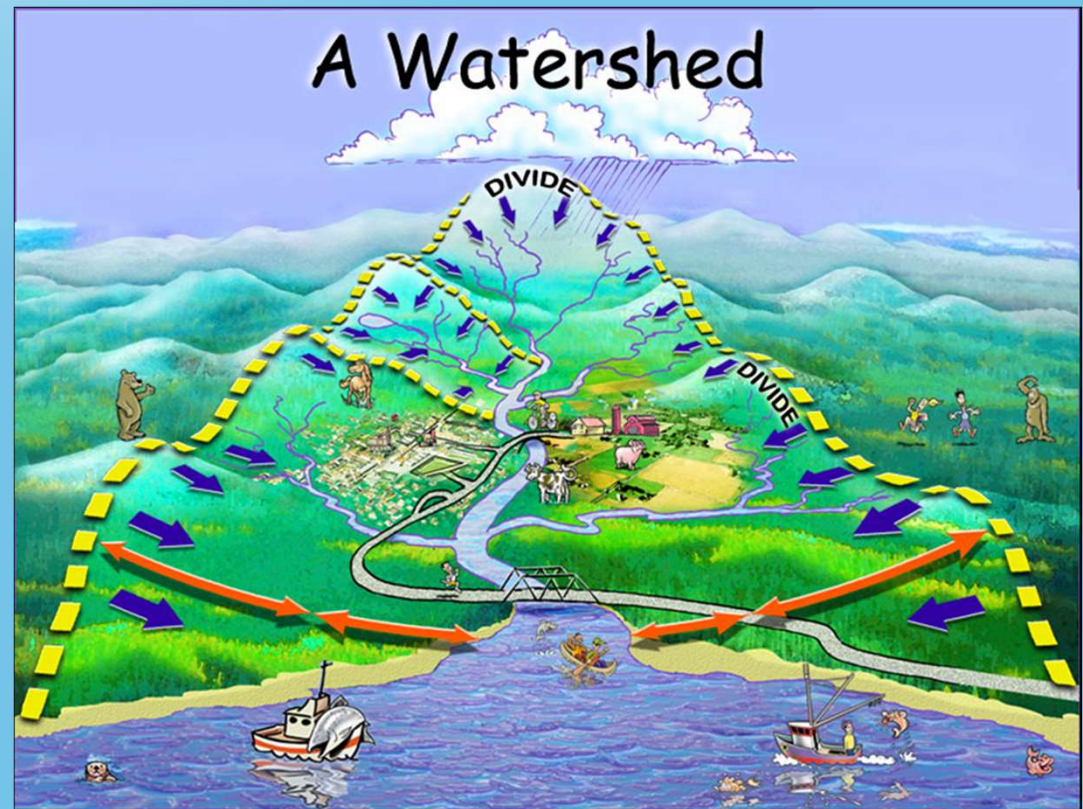
First Flush for Pollution ... Source Areas



... Sometimes the “source” is unlimited

2. *The Trouble with Moving Watershed Boundaries*

People generally know what a “cartoon” watershed boundary looks like



The Trouble with *Moving* Watershed Boundaries

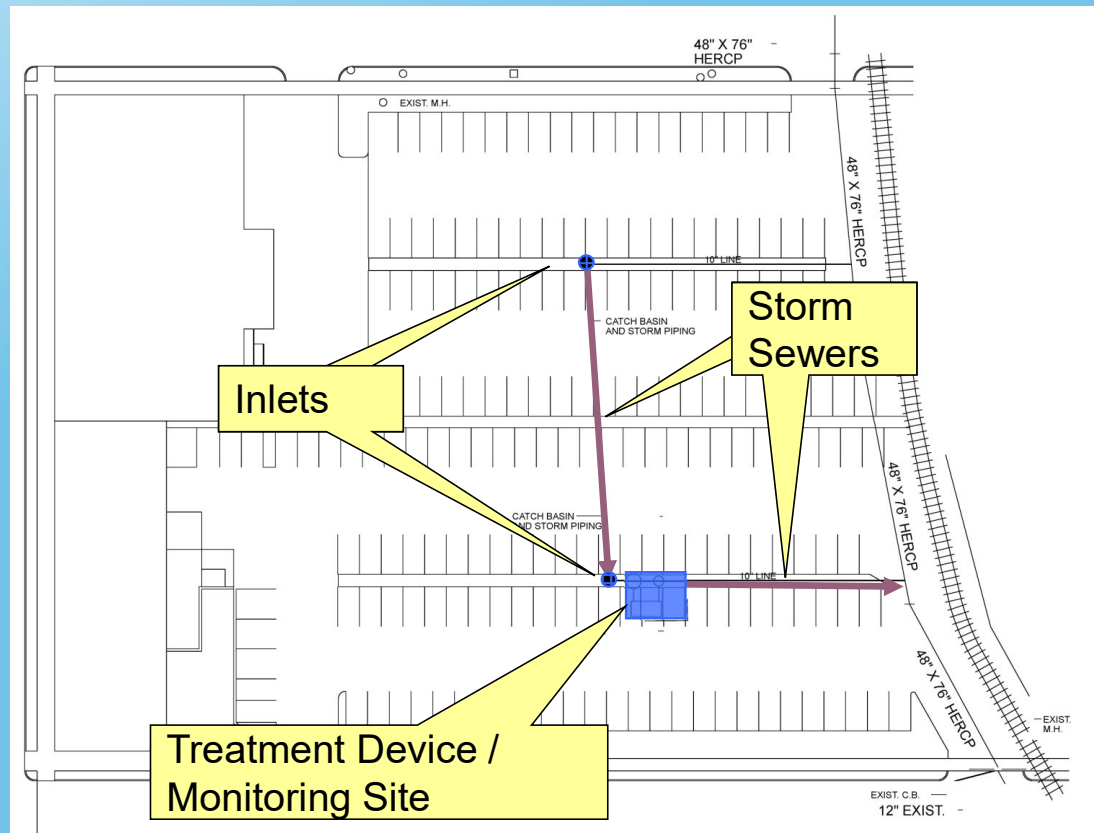
... Now let's look at a real urban example



Parking Lot Draining to a Monitored Treatment Device

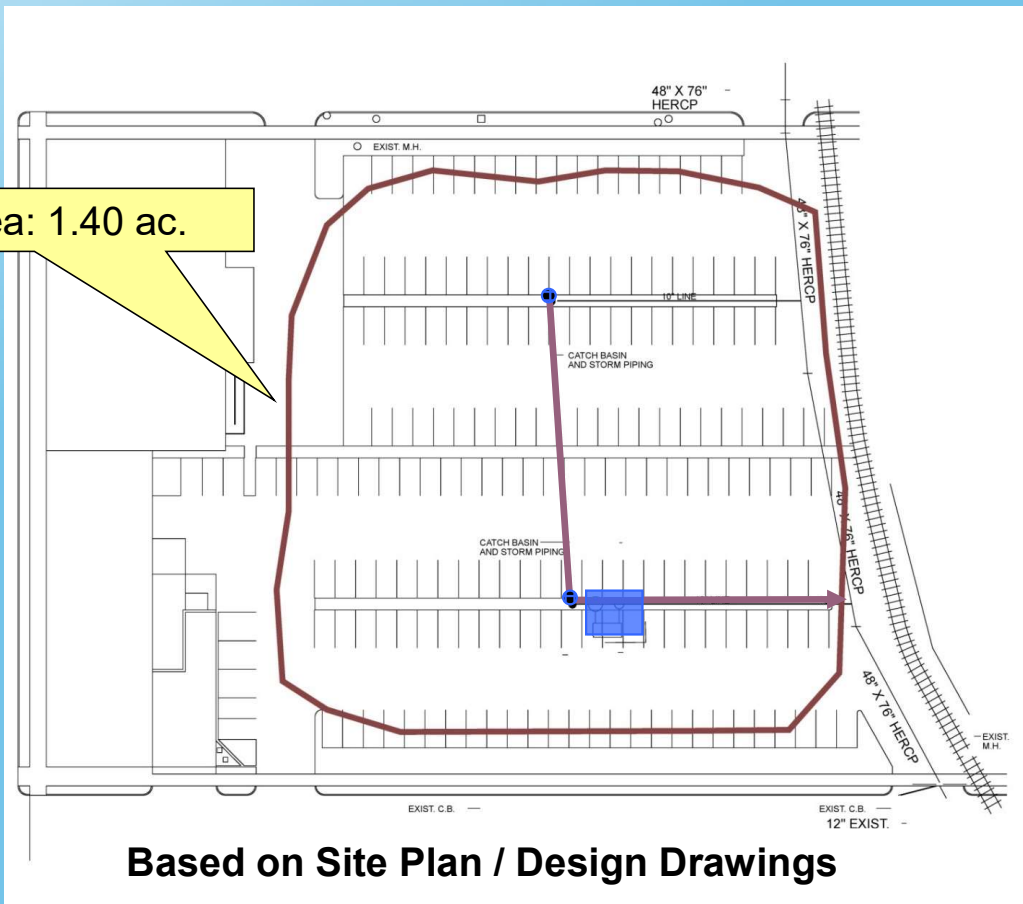
The Trouble with Moving Watershed Boundaries

... Now let's look at a real urban example



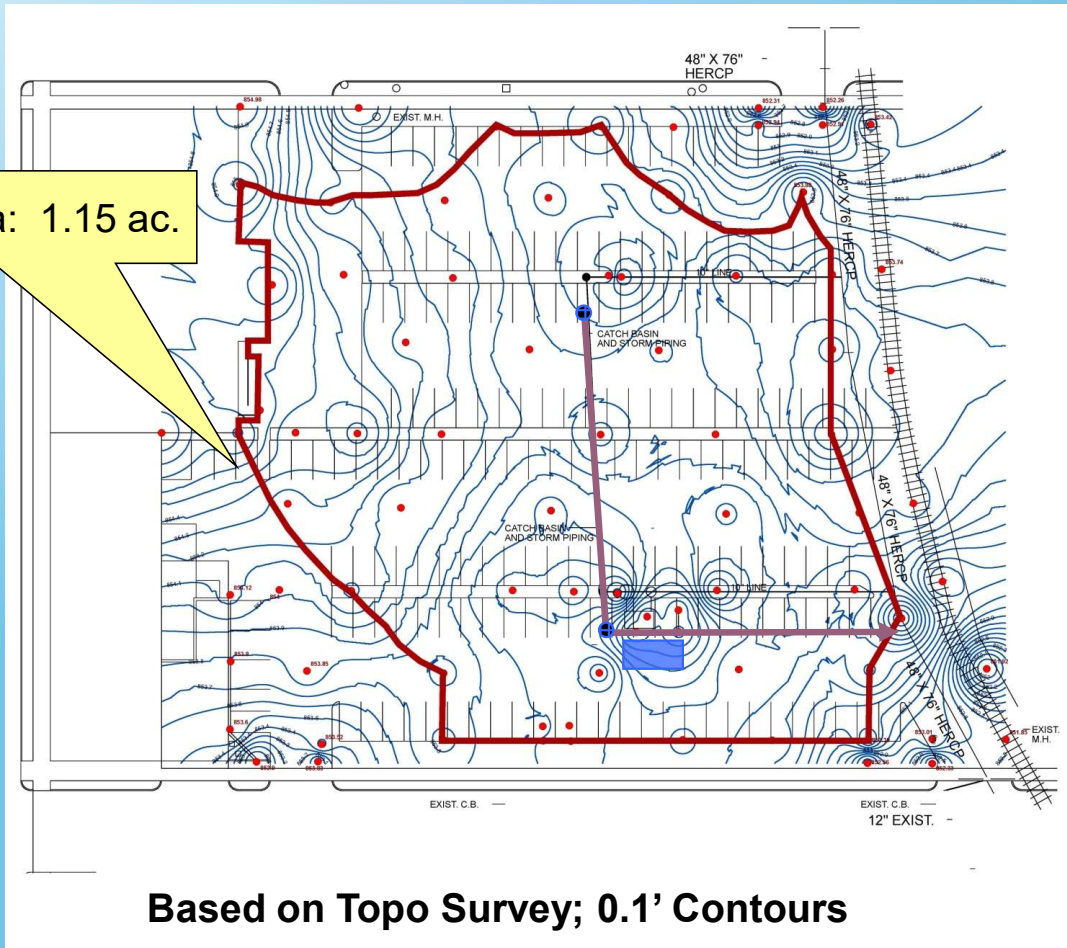
The Trouble with *Moving* Watershed Boundaries

Watershed Area: 1.40 ac.



Watershed Delineation #2

Watershed Area: 1.15 ac.



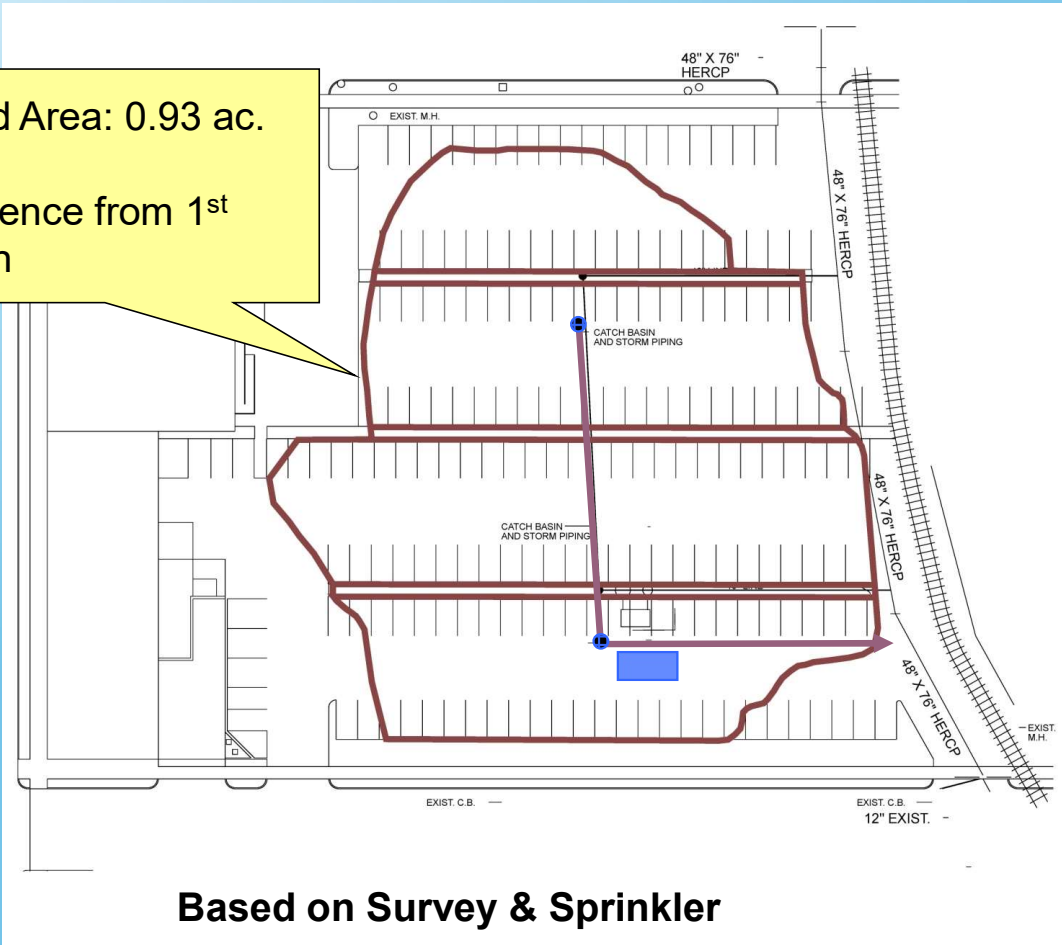
Watershed Delineation #3



Watershed Delineation #3

Watershed Area: 0.93 ac.

33% difference from 1st delineation



Based on Survey & Sprinkler

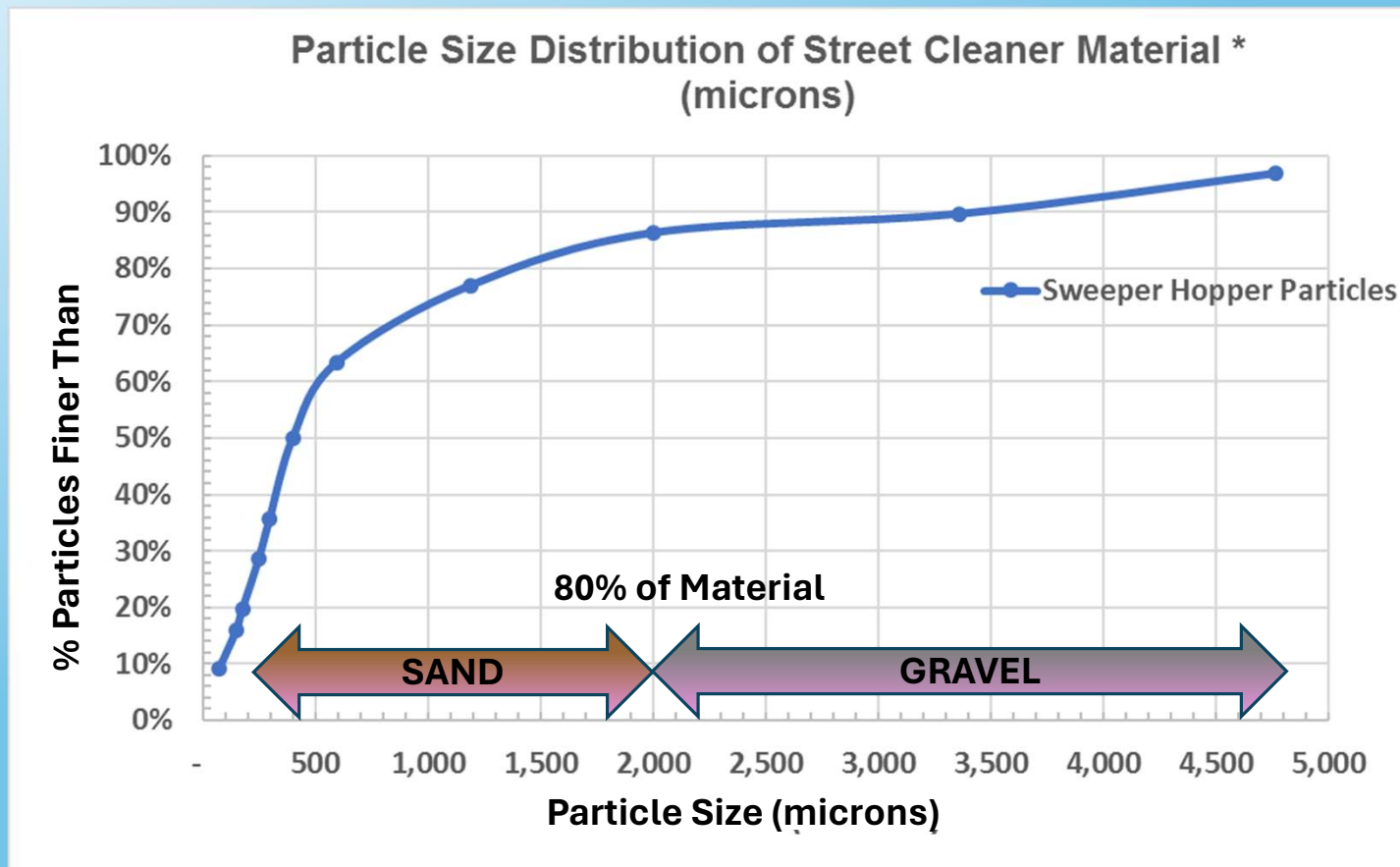
3. *Let's Talk About Street Dirt & Street Cleaning*



What Do Street Cleaners Pick Up?

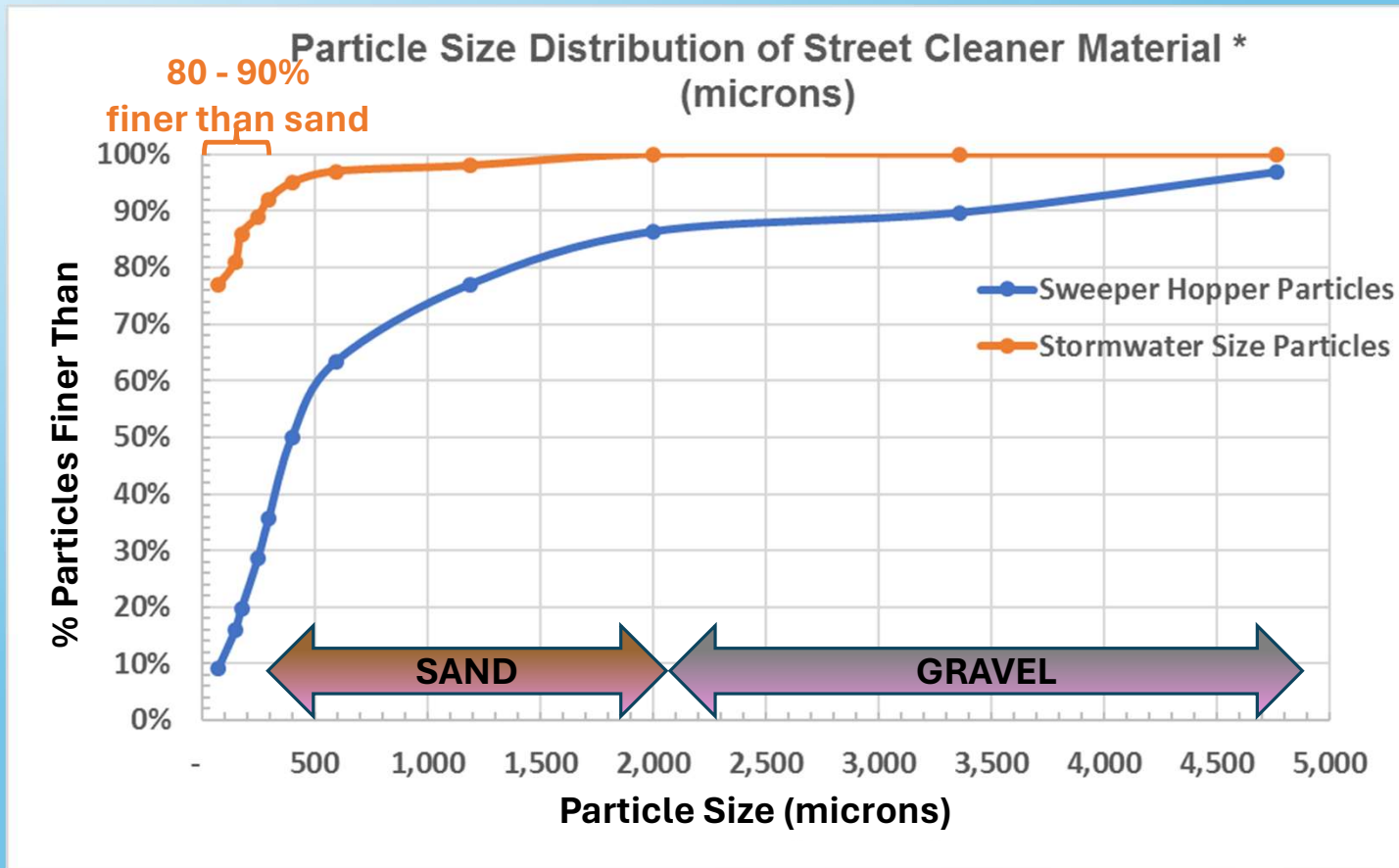


What Do Street Cleaners Pick Up?



*City of Madison, WI
study 1999

What's In the Stormwater? (at end of pipe?)



What Do Street Cleaners Pick Up?

Are Street Cleaners Helpful? – YES!

- Pick up trash, debris from streets
- Remove gross solids and keep them from downstream systems
- *Some* TSS reduction
- Fall leaf pick can reduce phosphorus in stormwater



What Did We Learn?

1. First Flush for Pollution – **Not** Always?
2. Watershed Boundaries **Can** “Move”
3. Street Dirt \neq Pollution (TSS) -- but street cleaning is still a good practice!



Questions?